

**2018**

*Cream of the Crop*

**BIMBADEEN  
BRANGUS**

*Bull Sale*

# Welcome

**Mark and Amanda Salisbury and family extend a very warm welcome to those attending Bimbadeen's 2018 'Cream of the Crop' Bull Sale.**

This year's lineup is especially exciting, as we offer the very best of our stud stock progeny - the first time we have presented our best bulls at a single sale venue. Those who attended Beef Australia 2018 in May will have had the chance to inspect the nine young sires being sold as live auction lots - a fantastic selection of two and three-year-old bulls ready for stud or commercial roles.

Our three lead bulls - Maverick, Memphis and Moonshine - represent directional traits for which we have been striving over the past decade. They each have unique strengths but all offer the PP gene to build polled assurance in your herd, with great measures and EBV's that will be rewarded commercially. The six young bulls following our 'M bulls' into the sale ring carry the best of Brangus genetic traits, with functionality, form and temperament key to their selection.

This sale will see a further 31 15-and16-month red and black Brangus bulls for your selection, via Helmsman auction immediately after the live auction is concluded. All lots presented offer genetics rooted deep in superior Bimbadeen female lines that have proven themselves over many generations - with 62 years worth of Australian Brangus breeding behind them and annual fertility pressure that has stood the test of time.

Our reference sires for this catalogue (pages 8-9) range from Oaklands Ambassador and Telpara Jackman to home-grown bull Bimbadeen Kosciuszko and commercial bulls sired by Raff Dakota (Angus) - as a result you will find a range of percentages (indicated in catalogue) to suit your herd. Doonside Franchise is our red Brangus sire for lots 26-30.

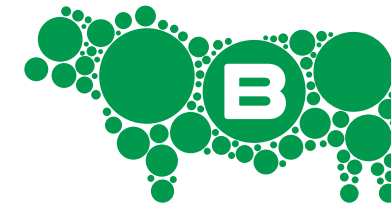
Bimbadeen sells seedstock throughout Australia, and we are J-BAS 7 (J-BAS 8 in 2019) and EU accredited. We strive for excellence in key traits: fertility, soundness and beef production. We love producing quality lines of functional, productive seed stock who excel in Australian conditions, and we stand behind the breeding stock we sell.

Thank you for your support and we look forward to seeing you at 'Bimbadeen' on August 25.

*PS. We will draw our second winner for a \$1000 sale credit at 9.30am - make sure your entry is in!*

Cheers

Mark & Amanda 



## 2018

# Cream of the Crop

## BIMBADEEN BRANGUS

# Bull Sale

### SATURDAY, 25TH AUGUST

### 9AM - NOON

SALE COMMENCING 10.30AM

### ON-PROPERTY AT 'ARTHUR'S KNOB'

## 40 RED & BLACK POLLED BRANGUS

### 29 REGISTERED AND 11 COMMERCIAL

LOTS 1 - 9 LIVE AUCTION    LOTS 10 - 40 HELMSMAN

**Amanda & Mark Salisbury**

'Upson Downs', MS 85 Eidsvold Qld 4627

P 07 4167 5141    M 0427 141 919    E [bimbadeen@skymesh.com.au](mailto:bimbadeen@skymesh.com.au)



**ROCKHAMPTON**

Brian Wedemeyer 0409 694 696

Robert Murray 0419 644 813



**MONTO**

Brad McNally

0428 780 414

## BIMBADEENBRANGUS.COM

# Buyer Information

**40 BRANGUS BULLS**  
**9 LIVE AUCTION**  
**31 HELMSMAN AUCTION**

On-property at 'Arthur's Knob' main yards, Bimbadeen Brangus, Eidsvold/Monto, QLD.

**Gates Open 9am**

**Live Auction commences 10.30am**  
 followed by **Helmsman Auction**

Smoko and lunch will be available.  
 Prior inspections by appointment.

**Mark Salisbury**

P. 07 4167 5141 M. 0427 141 919  
 E. bimbadeen@skymesh.com.au  
 W. www.bimbadeenbrangus.com  
 F. facebook.com/Bimbadeen

## AGENTS

**Elders Rural, Rockhampton**

Brian Wedemeyer 0409 694 696  
 brian.wedemeyer@elders.com.au

Robert Murray 0419 644 813  
 robert.murray@elders.com.au

**Monto Cattle & Country**

Brad McNally 0428 780 414  
 info@montocattleandcountry.com.au

## BULL PREPARATION

All bulls have been run on native grasses and supplemented with a silage and barley mix (recommended by a nutritionist at Riverina Stockfeeds).

## HEALTH

All lots are visually vet\* inspected and have been treated twice with 5-in-1 and vaccinated at weaning for tick fever.

## FERTILITY

Dr Stacey Rae\* (Monto Vet Surgery) has crush-side tested and done scrotal measures on all bulls.

## SUPPLEMENTARY SHEETS

Will be available on August 24, and will include current weights, scan data (EMA, rib and rump fat and marbling), poll-horn DNA results.

## MOVEMENT OF BULLS

- Cattle will be clean on sale day (inspection contact details can be provided to buyers).
- We are a J-BAS 7 herd (WA eligible).
- Free delivery locally and to Rockhampton, North Burnett.

## INSURANCE

From the fall of the hammer by arrangement with insurer.

## GOT A QUESTION?

The Bimbadeen team is available via phone or Facebook messenger. International enquiries are welcomed (remove '0' and add +61 to phone numbers).

## OUTSIDE AGENTS REBATE

A rebate of 2% commission will be paid to any agent: - Accompanying a client to the sale or - Attends the sale and purchases on a client's behalf - Settling within 7 days

## PHONE RECEPTION

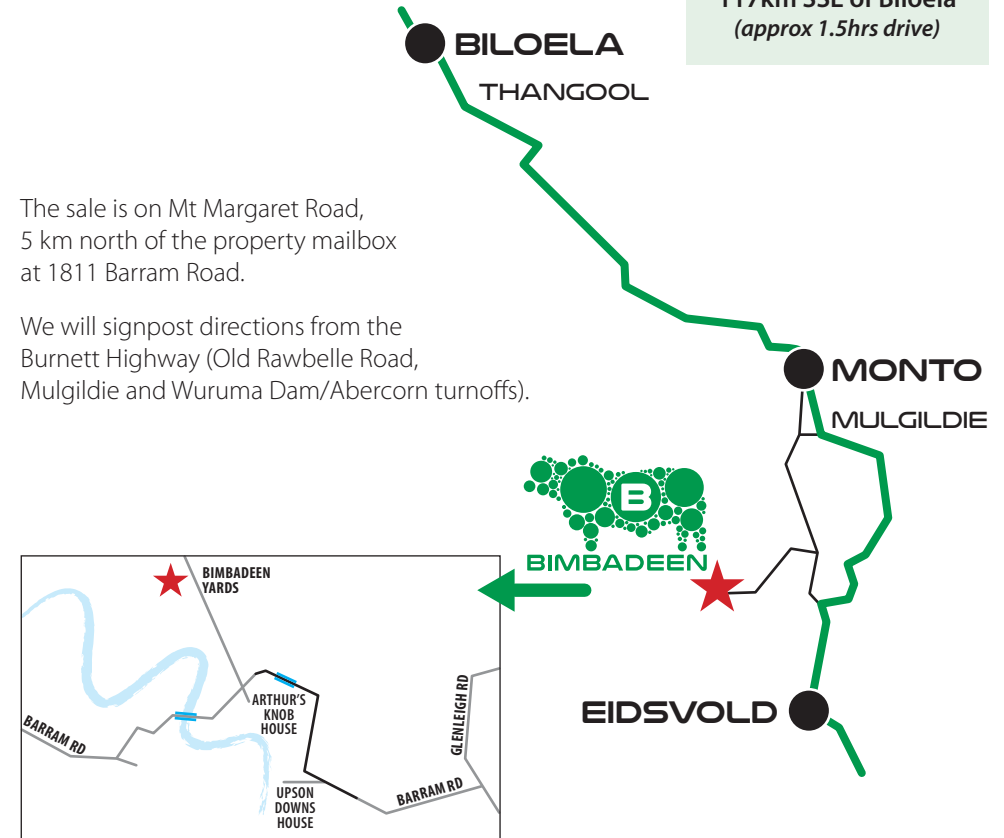
There is mobile phone coverage at the sale location.

## SETTLING YOUR NEW BULL

The relocation of your sire to his new home may leave him slightly unsettled - especially if he is travelling on his own. We suggest that if you are not putting him directly in with cows, ensure he has company (a cow or steer) on arrival. We treat our bulls with respect and handle them quietly - each bull has their own personality and flight zone, but we have taken care to ensure there are no general temperament issues.

# Directions

**'ARTHUR'S KNOB' MAIN YARDS LOCATED**  
 50km SW of Monto  
 59km NW of Eidsvold  
 117km SSE of Biloela  
 (approx 1.5hrs drive)



The sale is on Mt Margaret Road, 5 km north of the property mailbox at 1811 Barram Road.

We will signpost directions from the Burnett Highway (Old Rawbelle Road, Mulgildie and Wuruma Dam/Abercorn turnoffs).

## ACCOMMODATION

If you require accommodation we recommend that you book early.

### From the North

Silo Motor Inn  
 Hotel Settlers  
 Sun Valley Motel

### Central

Colonial Motor Inn  
 Three Moon Hotel  
 Caravan Park

### BILOELA

07 4992 5555  
 07 4992 2933  
 07 4992 1281

### MONTO

07 4166 1377  
 07 4166 1777  
 07 4166 1492

### From the South

On the Corner Motel  
 Star Hotel

### Billabong Motor Inn

Three Rivers Tourist Park

Colonial Motor Inn

### EIDSVOLD

07 41651207  
 07 4165 1109

### MUNDUBBERA

07 4165 4533  
 07 4165 3000

### GAYNDAH

07 4161 1999

# EBVs Explained

**GL - Gestation Length (days)** is an estimate of the time from conception to the birth of the calf and is based on AI records. Lower (negative) GL EBVs indicate shorter gestation length and therefore easier calving and increased growth after birth.

**BW - Birth Weight EBV (kg)** is based on the measured birth weight of progeny, adjusted for dam age. The lower the value the lighter the calf at birth and the lower the likelihood of a difficult birth. This is particularly important when selecting sires for use over heifers.

**200D - 200 Day Growth EBV (kg)** is calculated from the weight of progeny taken between 80 and 300 days of age. Values are adjusted to 200 days and for age of dam. This EBV is the best single estimate of an animal's genetic merit for growth to early ages.

**400D - 400 Day Weight EBV (kg)** is calculated from the weight of progeny taken between 301 and 500 days of age, adjusted to 400 days and for age of dam. This EBV is the best single estimate of an animal's genetic merit for yearling weight.

**600 - 600 Day Weight EBV (kg)** is calculated from the weight of progeny taken between 501 and 900 days of age, adjusted to 600 days and for age of dam. This EBV is the best single estimate of an animal's genetic merit for growth beyond yearling age.

**MCWT - Mature Cow Weight EBV (kg)** is based on the cow weight when the calf is weighed for weaning, adjusted to 5 years of age. This EBV is an estimate of the genetic difference in cow weight at 5 years of age and is an indicator of growth at

later ages and potential feed maintenance requirements of the females in the breeding herd. Smaller, or more moderate EBVs are generally more favourable.

The Mature Cow Weight EBV may also be used by steer breeders wishing to grow animals out to a larger weight.

**MILK - Milk EBV (kg)** is an estimate of an animal's milking ability. For sires, this EBV indicates the effect of the daughter's milking ability, inherited from the sire, on the 200 and 400 day weights of her calves. For dams, it indicates her own milking ability.

**SS - Scrotal Size EBV (cm)** is calculated from the circumference of the scrotum, measured in centimetres and adjusted to 400 days of age. This EBV is an estimate of a sire's genetic merit for scrotal size and is positively correlated to age of puberty in female progeny.

**Days to Calving (days)** This EBV indicates the fertility of the daughters of the sire. It is the time interval between the date when the female is first exposed to a bull in a paddock mating to the day when she subsequently calves. A negative EBV for days to calving indicates a shorter interval from bull-in date to calving and therefore higher fertility.

**CWT - Carcase Weight EBV (kg)** is based on abattoir carcase records and is an indicator of the genetic differences in carcase weight at the standard age of 650 days.

**Eye Muscle Area EBV (sq cm)** is calculated from measurements from live animal ultrasound scans and from abattoir carcase data, adjusted to a standard 300 kg carcase.

This EBV estimates genetic differences in eye muscle area at the 12/13th rib site of a 300 kg dressed carcase. More positive EBVs indicate better muscling on animals. Sires with relatively higher EMA EBVs are expected to produce better muscled and higher percentage yielding progeny at the same carcase weight than will sires with lower EMA EBVs.

**Rib Fat and Rump Fat EBVs (mm)** are calculated from measurements of subcutaneous fat depth at the 12/13 rib site and the P8 rump site (from live animal ultrasound scans and from abattoir carcasses) and are adjusted to a standard 300 kg carcase. These EBVs are indicators of the genetic differences in fat distribution on a

standard 300 kg carcase. Sires with low, or negative, fat EBVs are expected to produce leaner progeny at any particular carcase weight than will sires with higher EBVs.

**Retail Beef Yield EBV (%)** indicates genetic differences between animals for retail yield percentage in a standard 300 kg carcase. Sires with larger EBVs are expected to produce progeny with higher yielding carcasses.

**Intramuscular Fat EBV (%)** is an estimate of the genetic difference in the percentage of intra-muscular fat at the 12/13th rib site in a 300kg carcase. Depending on market targets, larger more positive values are generally more favourable.

## Breed Values

BRANGUS BREEDPLAN - PERCENTILE BANDS FOR 2016 BORN CALVES

	BIRTH		GROWTH					FERTILITY	CARCASE					INDEXES		
	Gest. Length (days)	Birth Wt. (kg)	200 Day Wt. (kg)	400 Day Wt. (kg)	600 Day Wt. (kg)	Mat Cow Wt. (kg)	Milk (kg)	Scrotal Size (cm)	Carcase Wt. (kg)	EMA (sq cm)	Rib Fat (mm)	Rump Fat (mm)	Retail Beef Yield (%)	IME (%)	Export (\$)	Domestic (\$)
Top Value	-4.0	-4.9	+34	+63	+70	+75	+6	+3.6	+34	+4.8	+4.1	+5.1	+2.1	+1.2	+50	+55
Top 1%	-2.9	-2.9	+27	+50	+56	+55	+4	+2.3	+27	+3.0	+2.5	+3.0	+1.6	+0.8	+42	+42
Top 5%	-2.0	-1.7	+23	+40	+45	+45	+2	+1.6	+24	+2.4	+1.5	+1.7	+1.2	+0.6	+36	+36
Top 10%	-1.8	-1.3	+20	+36	+40	+39	+1	+1.4	+21	+2.0	+1.1	+1.3	+1.0	+0.5	+32	+33
Top 15%	-1.6	-1.2	+18	+32	+36	+35	+1	+1.2	+19	+1.8	+0.9	+1.0	+0.8	+0.4	+29	+30
Top 20%	-1.4	-1.0	+16	+30	+33	+32	+1	+1.1	+18	+1.6	+0.7	+0.8	+0.7	+0.4	+27	+28
Top 25%	-1.2	-0.9	+15	+27	+30	+29	+0	+0.9	+17	+1.4	+0.6	+0.7	+0.6	+0.4	+25	+27
Top 30%	-1.1	-0.8	+14	+25	+28	+26	+0	+0.8	+15	+1.3	+0.6	+0.5	+0.5	+0.3	+23	+25
Top 35%	-1.0	-0.7	+13	+23	+26	+24	+0	+0.7	+14	+1.2	+0.5	+0.4	+0.5	+0.3	+22	+23
Top 40%	-0.9	-0.6	+12	+22	+24	+22	-1	+0.6	+13	+1.1	+0.4	+0.3	+0.4	+0.3	+20	+22
Top 45%	-0.8	-0.5	+11	+20	+22	+20	-1	+0.5	+12	+1.0	+0.3	+0.2	+0.3	+0.3	+19	+21
<b>Top 50%</b>	<b>-0.7</b>	<b>-0.4</b>	<b>+10</b>	<b>+19</b>	<b>+20</b>	<b>+17</b>	<b>-1</b>	<b>+0.4</b>	<b>+12</b>	<b>+1.0</b>	<b>+0.3</b>	<b>+0.2</b>	<b>+0.3</b>	<b>+0.2</b>	<b>+18</b>	<b>+19</b>
Top 55%	-0.6	-0.2	+9	+17	+18	+16	-1	+0.3	+11	+0.9	+0.2	+0.1	+0.2	+0.2	+17	+18
Top 60%	-0.5	+0.0	+8	+16	+17	+14	-2	+0.2	+10	+0.8	+0.1	+0.0	+0.2	+0.2	+15	+17
Top 65%	-0.4	+0.1	+7	+15	+15	+12	-2	+0.1	+9	+0.7	+0.0	-0.1	+0.1	+0.2	+14	+16
Top 70%	-0.4	+0.3	+6	+14	+13	+10	-2	+0.0	+8	+0.6	+0.0	-0.2	+0.1	+0.1	+13	+15
Top 75%	-0.3	+0.5	+6	+12	+12	+8	-3	+0.0	+7	+0.5	-0.1	-0.3	+0.0	+0.1	+12	+14
Top 80%	-0.2	+0.7	+5	+11	+11	+7	-3	-0.1	+7	+0.5	-0.3	-0.5	+0.0	+0.1	+11	+13
Top 85%	-0.1	+0.9	+5	+10	+9	+5	-4	-0.2	+6	+0.4	-0.4	-0.7	-0.1	+0.0	+10	+12
Top 90%	+0.0	+1.3	+4	+8	+7	+2	-5	-0.3	+5	+0.2	-0.6	-0.9	-0.2	+0.0	+8	+10
Top 95%	+0.3	+1.8	+2	+5	+4	-1	-6	-0.5	+3	+0.0	-1.0	-1.4	-0.4	-0.1	+6	+7
Top 99%	+1.0	+2.6	-2	+1	-2	-10	-8	-1.1	+0	-0.4	-1.7	-2.3	-0.9	-0.4	+2	+4
Low Value	+2.8	+4.9	-5	-6	-14	-22	-11	-2.5	-5	-1.6	-2.4	-3.1	-1.7	-0.7	-10	-8

# ARE YOU FINANCIALLY CONFIDENT?

We work with you to get organised and stay in control of your finances



[WWW.LONSDALEAGRIBUSINESS.COM.AU](http://WWW.LONSDALEAGRIBUSINESS.COM.AU)

Robert Murray	0419 644 813
Randall Spann	0429 700 332
Andrew Meara	0427 210 634
Brian Wedemeyer	0409 694 696
Michael Smith	0428 541 711
Lisa Hedges	0427 891 367
Blake Munro	0428 862 469

*"Your Breed,  
Our Team...  
You Succeed"*

[www.elders.com.au](http://www.elders.com.au)

**Elders**

# Reference Sires



**OAKLANDS  
AMBASSADOR (P)(AI)(ET)**  
NMH11R392G3

Selected for his outstanding poll, underline and structure - Ambassador infuses Bimbadeen progeny with the best of Brinks breeding with excellent EBVs.

Sire of ten lots in this catalogue, including Memphis and Maverick (lots 1 & 2) and Nugget (lot 6) in the live auction.



**TELPARA HILLS  
JACKMAN 541H17**  
(P)(AI)(ET) TEL12R541H17

Jackman offers strong Brinks and Suhn's genetics, selected for style, bone, poll and growth-for-age attributes.

12 of Jackman's progeny are offered in this sale, with Bimbadeen Moonshine (lot 3) Newcastle (lot 5), Nadal (lot 8) and Norse (lot 9) offered in the live auction.



**TELPARA HILLS  
MUNDINE 820J2**  
(P)(AI) TEL13R820J2

Mundine is a very even Brangus type who offered excellent EBVs.

He has sired four lots in this catalogue, including Nebula (lot 7) in the live auction.



**BIMBADEEN Q  
KOSCIUSZKO**  
(P) BIM13RK2

A home-grown bull who has grown into a strong sire - with a big frame, Aussie-style polled head and skin and outstanding temperament.

His pedigree goes back to Czonka of Brinks on his sire's side and his dam (G173) has a double dose of Greendale.

Sire of Never Never (lot 4) and Nike (lots 10) (photo taken at 18 mths of age)



**DOONSIDE  
FRANCHISE 1938**  
(P)(AI) 3O112R1938

Franchise is a strong, deep, polled red bull with plenty of growth and sought-after red Brangus genetics (including CX Home Run 135/P and Duarran Fantastic).

## Helmsman Auction Explained (LOTS 10 - 40)

All lots are open for bidding at one time. Buyers may place bids of their choice on any lot (irrespective of order) and may bid on more than one lot at a time.

A board will show current bids on all lots, so you can see if your offer has been overbid.

The system is flexible and provides purchasers time to consider another lot, if a bid has gone beyond their limit. The sale will remain open for a minimum of 1.5 hours.

A bid registered in the last ten minutes will result in a ten minute extension (at agent's discretion). Bids may be made in person on-site or via phone with agent as arranged.

### LOT NUMBER BACKGROUND COLOURS

Green - Live Auction    Black - Helmsman Black Brangus    Red - Helmsman Red Brangus



Bimbadeen Q  
**MOONSHINE**

**#1**

**REGISTERED**

Ident: **BIM15FM114**  
DOB: **08/10/2015**  
% BI: **43.75%**

*EBVs*

GL		
BW	0.5	41%
200D	14	56%
400D	22	57%
600D	23	50%
MCWT	12	37%
MILK	2	33%
SS	1	68%
CWT	12	44%

DATE	WEIGHT
Weaning	358kg
400D	487kg
SCROTAL	MOTILITY
42cm	85%

**#2**

**REGISTERED**

Ident: **BIM15RM10**  
DOB: **08/10/2015**  
% BI: **43.58%**

*EBVs*

GL	-0.8	29%
BW	1.8	45%
200D	21	58%
400D	43	59%
600D	47	52%
MCWT	45	40%
MILK	-1	37%
SS	3.6	69%
CWT	24	47%

DATE	WEIGHT
Weaning	382kg
400D	520kg
SCROTAL	MOTILITY
43cm	80%

Bimbadeen Q  
**MEMPHIS**

- LEAD GUN OF BRINKS 222K14 (P)
- CSONKA OF BRINKS 30R4 (P)
- MISS BRINKS UPPERCUT 30L18 (P)
- S OAKLANDS AMBASSADOR (P) (AI) (ET)**
- SUNDANCE OF BRINKS 392G9 (P)
- MISS BRINKS SUNDANCE 392L (P)
- MISS BRINKS TROOPER 392G18 (P)
- TRANSFORMER OF BRINKS (P)
- DOONSIDE BB176-01 (P) (AI)
- DOONSIDE 277 (P) (AI)
- D BIMBADEEN Q DO135 (P)**
- BRANGUS BULL (P)
- BIMBADEEN Q P033 (P)
- BIMBADEEN Q C142 (P)

- SUHN'S AFFIRMED 416N4 (P)
- CB HOMBRE 541T3 (P)
- MS BRINKS BRIGHT SIDE 541K28 (S)
- S TELPARA HILLS JACKMAN 541H17 (P)(AI)(ET)**
- SINGLETARY OF BRINKS 675R (P)
- TELPARA HILLS MISS SINGLETARY 541E (P) (ET)
- MS BRINKS SUNDANCE 541M43 (P)
- BRANGUS BULL B25A75 (P)
- D BIMBADEEN Q Q130 (P)**
- BRANGUS BULL (P)
- BIMBADEEN Q K128 (P)
- BIMBADEEN Q G146 (COM) (P)



Bimbadeen Q  
**MAVERICK**

**#3**

**REGISTERED**

Ident: **BIM15RM1**  
DOB: **05/11/2015**  
% BI: **39.68%**

*EBVs*

GL	-0.9	29%
BW	1.7	47%
200D	20	59%
400D	34	59%
600D	40	53%
MCWT	44	41%
MILK	1	36%
SS	2.1	68%
CWT	19	47%

DATE	WEIGHT
Weaning	381kg
400D	508kg
SCROTAL	MOTILITY
41cm	70%

- LEAD GUN OF BRINKS 222K14 (P)
- CSONKA OF BRINKS 30R4 (P)
- MISS BRINKS UPPERCUT 30L18 (P)
- S OAKLANDS AMBASSADOR (P) (AI) (ET)**
- SUNDANCE OF BRINKS 392G9 (P)
- MISS BRINKS SUNDANCE 392L (P)
- MISS BRINKS TROOPER 392G18 (P)
- GREENDALE OSCAR (P)
- GREENDALE Y0035 (P)
- TE MANIA MOONGARRA M121 (P)
- D BIMBADEEN Q R22 (P)**
- BIMBADEEN Q E118 (P)
- BIMBADEEN Q K164 (P)
- BIMBADEEN Q F167 (P)

PURCHASER: \_\_\_\_\_ S  
12 CREAM OF THE CROP BIMBADEEN BRANGUS BULL SALE

**#4**

**REGISTERED**

Ident: **BIM16FN9**  
DOB: **15/11/2016**  
% BI: **53.20%**

*EBVs*

GL	-0.4	33%
BW	1.7	47%
200D	10	50%
400D	21	52%
600D	21	43%
MCWT	17	29%
MILK	1.5	66%
SS	1.5	66%
CWT	12	38%

DATE	WEIGHT
Weaning	325kg
400D	558kg
SCROTAL	MOTILITY
41cm	80%

Bimbadeen Q  
**NEVER NEVER**

- CSONKA OF BRINKS 30R4 (P)
- RUSHTON CSONKA'S FORTUNE (P) (ET)
- TELPARA HILLS NEW FRONTIER EMPRESS EMPC7 (S) (AI) (ET)
- S BIMBADEEN Q KOSCIUSZKO (P)**
- GREENDALE Y181 (P)
- BIMBADEEN Q G173 (P)
- BIMBADEEN Q R593 (P)
- BOOGALGOPAL BRAHMAN BULL (S)
- D BIMBADEEN Q J724 (P)**
- BRANGUS COW B25A75 (P)

PURCHASER: \_\_\_\_\_ S  
CREAM OF THE CROP BIMBADEEN BRANGUS BULL SALE 13



Bimbadeen Q  
**NEWCASTLE**

**#5**

**REGISTERED**

Ident: **BIM16RN32**  
DOB: **02/12/2016**  
% BI: **40.45%**

*EBVs*

GL	-0.4	26%
BW	1.4	44%
200D	19	58%
400D	35	58%
600D	38	52%
MCWT	31	40%
MILK	0	34%
SS	0.3	68%
CWT	20	46%

DATE	WEIGHT
Weaning	339kg
400D	604kg
SCROTAL	MOTILITY
35cm	70%

**#6**

**REGISTERED**

Ident: **BIM16RN54**  
DOB: **05/11/2016**  
% BI: **46.07%**

*EBVs*

GL	-0.9	28%
BW	0.2	46%
200D	12	60%
400D	22	59%
600D	28	53%
MCWT	27	41%
MILK	-1	36%
SS	0.2	69%
CWT	15	47%

DATE	WEIGHT
Weaning	327kg
400D	574kg
SCROTAL	MOTILITY
36cm	85%

Bimbadeen Q  
**NUGGET**

LEAD GUN OF BRINKS 222K14 (P)  
CSONKA OF BRINKS 30R4 (P)  
MISS BRINKS UPPERCUT 30L18 (P)

**S OAKLANDS AMBASSADOR** (P) (AI) (ET)

SUNDANCE OF BRINKS 392G9 (P)  
MISS BRINKS SUNDANCE 392L (P)  
MISS BRINKS TROOPER 392G18 (P)

GREENDALE UNREAL (P) (ET)  
BIMBADEEN Q Q003 (P) (AI)  
GREENDALE QUENTIN (P)

**D BIMBADEEN Q H129** (P)

TARCOOLA 709 (P)  
BIMBADEEN Q L090 (P)  
BIMBADEEN Q H211 (P)

SUHN'S AFFIRMED 416N4 (P)  
CB HOMBRE 541T3 (P)  
MS BRINKS BRIGHT SIDE 541K28 (S)  
**S TELPARA HILLS JACKMAN 541H17** (P)(AI)(ET)  
SINGLETARY OF BRINKS 675R (P)  
TELPARA HILLS MISS SINGLETARY 541E (P) (ET)  
MS BRINKS SUNDANCE 541M43 (P)  
  
TRANSFORMER OF BRINKS (P)  
DOONSIDE BB176-01 (P) (AI)  
DOONSIDE 277 (P) (AI)  
**D BIMBADEEN Q E85** (P)  
BIMBADEEN Q H139 (P)  
BIMBADEEN Q L 114 (P)  
BIMBADEEN Q B134 (P)

PURCHASER: \_\_\_\_\_ S

PURCHASER: \_\_\_\_\_ S



Bimbadeen Q  
**NEBULA**

**#7**

**REGISTERED**

Ident: **BIM16RN86**  
DOB: **25/10/2016**  
% BI: **41.83%**

*EBVs*

GL	-1.2	28%
BW	1.6	43%
200D	23	57%
400D	37	57%
600D	41	50%
MCWT	38	39%
MILK	-2	35%
SS	1.8	67%
CWT	22	45%

DATE	WEIGHT
Weaning	358kg
400D	582kg
SCROTAL	MOTILITY
43cm	85%

- LEAD GUN OF BRINKS 222K14 (P)
- CSONKA OF BRINKS 30R4 (P)
- MISS BRINKS UPPERCUT 30L18 (P)
- S TELPARA HILLS MUNDINE 820J2 (P)(AI)**
- BRINKS BRIGHT SIDE 607 L11 ET (P)
- TELPARA HILLS MISS L11 820D4 (P) (ET)
- CENTER MS BEST BET 820/R42 (S)
- TRANSFORMER OF BRINKS (P)
- DOONSIDE IRA HAYES (P) (AI)
- DOONSIDE BB 3704-04 (P)
- D BIMBADEEN Q JO70 (P)**
- DOONSIDE BB176-01 (P) (AI)
- BIMBADEEN Q D0135 (P)
- BIMBADEEN Q P033 (P)

PURCHASER: \_\_\_\_\_ S

**#8**

**REGISTERED**

Ident: **BIM16RN6**  
DOB: **02/12/2016**  
% BI: **44.44%**

*EBVs*

GL	-0.2	26%
BW	0.5	44%
200D	12	59%
400D	29	59%
600D	29	52%
MCWT	21	40%
MILK	-4	34%
SS	1.6	69%
CWT	16	46%

DATE	WEIGHT
Weaning	294kg
400D	564kg
SCROTAL	MOTILITY
37cm	70%

Bimbadeen Q  
**NADAL N6**

- SUHN'S AFFIRMED 416N4 (P)
- CB HOMBRE 541T3 (P)
- MS BRINKS BRIGHT SIDE 541K28 (S)
- S TELPARA HILLS JACKMAN 541H17 (P)(AI)(ET)**
- SINGLETARY OF BRINKS 675R (P)
- TELPARA HILLS MISS SINGLETARY 541E (P) (ET)
- MS BRINKS SUNDANCE 541M43 (P)
- TRANSFORMER OF BRINKS (P)
- DOONSIDE IRA HAYES (P) (AI)
- DOONSIDE BB 3704-04 (P)
- D BIMBADEEN Q J139 (P)**
- BINDAREE BOONARA (P)
- BIMBADEEN Q P004 (P)
- BIMBADEEN Q J125 (P)

PURCHASER: \_\_\_\_\_ S



# RIVERINA

## STOCKFEEDS

### PROVEN PERFORMANCE FEED FOR SALE AND SHOW STOCK

- ✓ Extensive Bulk/Bagged Range
- ✓ Palleted & Dry Custom Feeds
- ✓ Quality Assured Products
- ✓ Competitive Pricing
- ✓ Professional Service
- ✓ Nutritional Advice

Bimbadeen Q  
**NORSE**

#9

REGISTERED

Ident: BIM16RN7  
DOB: 04/11/2016  
% BI: 43.26%

EBVs

GL	-0.2	25%
BW	0.7	46%
200D	12	61%
400D	23	60%
600D	24	54%
MCWT	20	42%
MILK	1	39%
SS	1.8	68%
CWT	12	48%

DATE	WEIGHT
Weaning	341kg
400D	602kg
SCROTAL	MOTILITY
43cm	80%

- SUHN'S AFFIRMED 416N4 (P)  
CB HOMBRE 541T3 (P)  
MS BRINKS BRIGHT SIDE 541K28 (S)  
S **TELPARA HILLS JACKMAN 541H17** (P)(AI)(ET)  
SINGLETARY OF BRINKS 675R (P)  
TELPARA HILLS MISS SINGLETARY 541E (P) (ET)  
MS BRINKS SUNDANCE 541M43 (P)  
  
COUTI-OUTI AGRO (P)  
GREENDALE QUICK MOVE (P)  
GREENDALE JO-JO (P)  
D **BIMBADEEN Q Q111** (P)  
GREENDALE KARDO (P)  
BIMBADEEN Q G167 (P)  
BIMBADEEN Z61 (P)

PURCHASER:

S



[www.riverina.com.au](http://www.riverina.com.au)

# Monto Cattle & Country

Your Local Stock & Station Agent



*Locally Owned & Operated*

**FORTNIGHTLY FAT & STORE CATTLE SALES**  
**ANNUAL ALL BREEDS BULL SALE - 8TH SEPTEMBER 2018**  
**SPRING STORE SALE - 12TH SEPTEMBER 2018**  
**RURAL & RESIDENTIAL PROPERTY SALES**  
**LIVESTOCK SCANNING REQUIREMENTS**

**Brad & Donna McNally**

31 Newton Street, Monto P 07 4166 1662 M 0428 780 414

E info@montocattleandcountry.com.au

**www.montocattleandcountry.com.au**



**#10**

**REGISTERED**

Ident: BIM16FN57

DOB: 19/11/2016

% BI: 49.95%

*EBVs*

GL		
BW	-0.1	32%
200D	13	49%
400D	25	51%
600D	25	42%
MCWT	20	28%
MILK		
SS	0.4	65%
CWT	14	37%

DATE	WEIGHT
Weaning	344kg
400D	580kg

SCROTAL	MOTILITY
37cm	70%

Bimbadeen Q  
**NIKE**

HELMSMAN

CSONKA OF BRINKS 30R4 (P)

RUSHTON CSONKA'S FORTUNE (P) (ET)

TELPARA HILLS NEW FRONTIER EMPRESS EMPC7 (S) (AI) (ET)

**S BIMBADEEN Q KOSCIUSZKO (P)**

GREENDALE Y181 (P)

BIMBADEEN Q G173 (P)

BIMBADEEN Q R593 (P)

BRANGUS BULL B62A38 (P)

**D BIMBADEEN Q J292 (P)**

BIMBADEEN BRANGUS COW (P)

PURCHASER:

S



Bimbadeen Q  
**NEBO**

HELMSMAN

**#11**

REGISTERED

Ident: **BIM16RN97**  
DOB: **25/10/2016**  
% BI: **43.35%**

EBVs

GL	-1.2	27%
BW	-0.3	42%
200D	11	56%
400D	27	57%
600D	27	50%
MCWT	27	38%
MILK	-2	33%
SS	0.6	66%
CWT	16	44%

DATE	WEIGHT
Weaning	308kg
400D	594kg
SCROTAL	MOTILITY
36cm	70%

- LEAD GUN OF BRINKS 222K14 (P)
- CSONKA OF BRINKS 30R4 (P)
- MISS BRINKS UPPERCUT 30L18 (P)
- S **TELPARA HILLS MUNDINE 820J2** (P)(AI)
- BRINKS BRIGHT SIDE 607 L11 ET (P)
- TELPARA HILLS MISS L11 820D4 (P) (ET)
- CENTER MS BEST BET 820/R42 (S)
- BARWONGA 926 (P)
- BONOX 302 (P)
- BRANGUS COW (P)
- D **BIMBADEEN Q F16** (P)
- BELVIEW IMPACT (P) (AI)
- GREENDALE SHERRY (P)
- GREENDALE MEDAL (P)

PURCHASER: \_\_\_\_\_ S

**#12**

REGISTERED

Ident: **BIM16FN98**  
DOB: **11/10/2016**  
% BI: **43.75%**

EBVs

GL	-1.9	26%
BW	-0.4	39%
200D	14	53%
400D	30	54%
600D	27	46%
MCWT	22	35%
MILK	-3	30%
SS	-1.2	66%
CWT	18	42%

DATE	WEIGHT
Weaning	349kg
400D	608kg
SCROTAL	MOTILITY
33cm	80%

Bimbadeen Q  
**NERO**

HELMSMAN

- LEAD GUN OF BRINKS 222K14 (P)
- CSONKA OF BRINKS 30R4 (P)
- MISS BRINKS UPPERCUT 30L18 (P)
- S **TELPARA HILLS MUNDINE 820J2** (P)(AI)
- BRINKS BRIGHT SIDE 607 L11 ET (P)
- TELPARA HILLS MISS L11 820D4 (P) (ET)
- CENTER MS BEST BET 820/R42 (S)
- BRANGUS BULL (P)
- D **BIMBADEEN Q J312** (P)
- BIMBADEEN BRANGUS COW (P)

PURCHASER: \_\_\_\_\_ S



HELMSMAN

# Bimbadeen Q N3

SUHN'S AFFIRMED 416N4 (P)  
 CB HOMBRE 541T3 (P)  
 MS BRINKS BRIGHT SIDE 541K28 (S)  
 S **TELPARA HILLS JACKMAN 541H17** (P)(AI)(ET)  
 SINGLETARY OF BRINKS 675R (P)  
 TELPARA HILLS MISS SINGLETARY 541E (P) (ET)  
 MS BRINKS SUNDANCE 541M43 (P)

BRANGUS BULL (P)

D **BIMBADEEN Q J704** (P)

BIMBADEEN BRANGUS COW (P)

PURCHASER: \_\_\_\_\_ S

#13

REGISTERED

Ident: **BIM16FN3**  
 DOB: **18/11/2016**  
 % BI: **43.75%**

EBVs

GL		
BW	-0.7	40%
200D	8	55%
400D	22	55%
600D	17	48%
MCWT	7	37%
MILK	-4	28%
SS	0.3	67%
CWT	11	43%

DATE	WEIGHT
Weaning	307kg
400D	568kg
SCROTAL	MOTILITY
38cm	80%

#14

REGISTERED

Ident: **BIM16RN10**  
 DOB: **18/11/2016**  
 % BI: **42.35%**

EBVs

GL	-0.1	26%
BW	-0.2	44%
200D	10	57%
400D	16	57%
600D	21	51%
MCWT	14	39%
MILK	-1	30%
SS	-0.8	68%
CWT	11	45%

DATE	WEIGHT
Weaning	314kg
400D	526kg
SCROTAL	MOTILITY
36cm	60%

HELMSMAN

# Bimbadeen Q N10

SUHN'S AFFIRMED 416N4 (P)  
 CB HOMBRE 541T3 (P)  
 MS BRINKS BRIGHT SIDE 541K28 (S)  
 S **TELPARA HILLS JACKMAN 541H17** (P)(AI)(ET)  
 SINGLETARY OF BRINKS 675R (P)  
 TELPARA HILLS MISS SINGLETARY 541E (P) (ET)  
 MS BRINKS SUNDANCE 541M43 (P)

GREENDALE UFFIZI (P) (ET)  
 GREENDALE Y181 (P)  
 GREENDALE QUASHED (P)

D **BIMBADEEN Q F45** (P)  
 BRANGUS BULL (P)  
 BIMBADEEN Q K306 (P)  
 BRANGUS COW (P)

PURCHASER: \_\_\_\_\_ S



HELMSMAN

# Bimbadeen Q N12

SUHN'S AFFIRMED 416N4 (P)  
 CB HOMBRE 541T3 (P)  
 MS BRINKS BRIGHT SIDE 541K28 (S)  
 S **TELPARA HILLS JACKMAN 541H17** (P)(AI)(ET)  
 SINGLETARY OF BRINKS 675R (P)  
 TELPARA HILLS MISS SINGLETARY 541E (P) (ET)  
 MS BRINKS SUNDANCE 541M43 (P)

BRANGUS BULL B62A38 (P)

D **BIMBADEEN Q R065** (P)

BIMBADEEN BRANGUS COW (P)

PURCHASER: \_\_\_\_\_ S

#15

REGISTERED

Ident: BIM16FN12  
 DOB: 02/12/2016  
 % BI: 46.75%

EBVs

GL		
BW	-0.3	41%
200D	10	56%
400D	20	57%
600D	17	50%
MCWT	6	37%
MILK	-4	33%
SS	0.2	68%
CWT	11	44%

DATE	WEIGHT
Weaning	323kg
400D	536kg
SCROTAL	MOTILITY
38cm	80%

#16

REGISTERED

Ident: BIM16FN24  
 DOB: 02/12/2016  
 % BI: 46.75%

EBVs

GL		
BW	-0.7	40%
200D	8	55%
400D	24	56%
600D	19	49%
MCWT	9	37%
MILK	-5	30%
SS	0.5	67%
CWT	13	43%

DATE	WEIGHT
Weaning	287kg
400D	548kg
SCROTAL	MOTILITY
38cm	70%

HELMSMAN

# Bimbadeen Q N24

SUHN'S AFFIRMED 416N4 (P)  
 CB HOMBRE 541T3 (P)  
 MS BRINKS BRIGHT SIDE 541K28 (S)  
 S **TELPARA HILLS JACKMAN 541H17** (P)(AI)(ET)  
 SINGLETARY OF BRINKS 675R (P)  
 TELPARA HILLS MISS SINGLETARY 541E (P) (ET)  
 MS BRINKS SUNDANCE 541M43 (P)

BRANGUS BULL B62A38 (P)

D **BIMBADEEN Q Q249** (P)

BIMBADEEN BRANGUS COW (P)

PURCHASER: \_\_\_\_\_ S



HELMSMAN

Bimbadeen Q **N33**

- SUHN'S AFFIRMED 416N4 (P)
- CB HOMBRE 541T3 (P)
- MS BRINKS BRIGHT SIDE 541K28 (S)
- S TELPARA HILLS JACKMAN 541H17 (P)(AI)(ET)**
- SINGLETARY OF BRINKS 675R (P)
- TELPARA HILLS MISS SINGLETARY 541E (P) (ET)
- MS BRINKS SUNDANCE 541M43 (P)
  
- BONOX 326 (P)
- BONOX 474 (P)
- BONOX 74 (P)
- D BIMBADEEN Q H114 (P)**
- GREENDALE Y0035 (P)
- BIMBADEEN Q E0020 (P)
- BIMBADEEN Q G170 (P)

#17

REGISTERED

Ident: BIM16RN33  
 DOB: 02/12/2016  
 % BI: 38.57%

EBVs

GL	-0.1	25%
BW	-0.2	44%
200D	8	59%
400D	16	58%
600D	17	52%
MCWT	12	39%
MILK	0	30%
SS	0.6	68%
CWT	9	45%

DATE	WEIGHT
Weaning	312kg
400D	528kg
SCROTAL	MOTILITY
38cm	70%

#18

REGISTERED

Ident: BIM16RN39  
 DOB: 22/10/2016  
 % BI: 41.49%

EBVs

GL	-0.5	29%
BW	1.4	44%
200D	18	57%
400D	35	58%
600D	40	51%
MCWT	38	40%
MILK	-2	35%
SS	2.3	69%
CWT	21	46%

DATE	WEIGHT
Weaning	335kg
400D	608kg
SCROTAL	MOTILITY
42cm	70%

HELMSMAN

Bimbadeen Q **N39**

- LEAD GUN OF BRINKS 222K14 (P)
- CSONKA OF BRINKS 30R4 (P)
- MISS BRINKS UPPERCUT 30L18 (P)
- S OAKLANDS AMBASSADOR (P) (AI) (ET)**
- SUNDANCE OF BRINKS 392G9 (P)
- MISS BRINKS SUNDANCE 392L (P)
- MISS BRINKS TROOPER 392G18 (P)
  
- TRANSFORMER OF BRINKS (P)
- DOONSIDE BB176-01 (P) (AI)
- DOONSIDE 277 (P) (AI)
- D BIMBADEEN Q D219 (P)**
- BRANGUS BULL (P)
- BIMBADEEN Q K194 (S)
- BIMBADEEN Q G035 (P)

PURCHASER: \_\_\_\_\_ S

PURCHASER: \_\_\_\_\_ S



HELMSMAN

# Bimbadeen Q N40

- LEAD GUN OF BRINKS 222K14 (P)
- CSONKA OF BRINKS 30R4 (P)
- MISS BRINKS UPPERCUT 30L18 (P)
- S **OAKLANDS AMBASSADOR** (P) (AI) (ET)
- SUNDANCE OF BRINKS 392G9 (P)
- MISS BRINKS SUNDANCE 392L (P)
- MISS BRINKS TROOPER 392G18 (P)
- TRANSFORMER OF BRINKS (P)
- DOONSIDE BB176-01 (P) (AI)
- DOONSIDE 277 (P) (AI)
- D **BIMBADEEN Q F214** (P)
- GLENOCH STOCKWHIP (P)
- BIMBADEEN Q L245 (P)

#19

REGISTERED

Ident: **BIM16RN40**  
 DOB: **22/10/2016**  
 % BI: **41.39%**

EBVs

GL	-0.7	29%
BW	2.3	44%
200D	24	58%
400D	42	58%
600D	48	52%
MCWT	45	40%
MILK	0	36%
SS	2.2	69%
CWT	25	46%

DATE	WEIGHT
Weaning	387kg
400D	664kg
SCROTAL	MOTILITY
41cm	80%

#20

REGISTERED

Ident: **BIM16RN46**  
 DOB: **22/10/2016**  
 % BI: **47.65%**

EBVs

GL	-0.4	35%
BW	2.3	44%
200D	8	52%
400D	17	53%
600D	20	45%
MCWT	19	31%
MILK	0	36%
SS	2.1	66%
CWT	11	39%

DATE	WEIGHT
Weaning	310kg
400D	534kg
SCROTAL	MOTILITY
40cm	70%

HELMSMAN

# Bimbadeen Q N46

- CSONKA OF BRINKS 30R4 (P)
- RUSHTON CSONKA'S FORTUNE (P) (ET)
- TELPARA HILLS NEW FRONTIER EMPRESS EMPC7 (S) (AI) (ET)
- S **BIMBADEEN Q KOSCIUSZKO** (P)
- GREENDALE Y181 (P)
- BIMBADEEN Q G173 (P)
- BIMBADEEN Q R593 (P)
- BARWONGA 926 (P)
- BONOX 302 (P)
- BRANGUS COW (P) 99916F
- D **BIMBADEEN Q J243** (P)
- DOONSIDE BB176-01 (P) (AI)
- BIMBADEEN Q F401 (P)
- BIMBADEEN Q P004 (P)

PURCHASER: \_\_\_\_\_ S

PURCHASER: \_\_\_\_\_ S



is now

**MOORE STEPHENS**

with the same people, local  
knowledge and client-focused  
approach.

**MOORE STEPHENS**

**Are you preparing to hand over the reins?**

At Moore Stephens we offer specialised succession planning services to help our rural clients make the right decisions today. We provide structured plans to cater for your family, business goals, alignment of expectations and wants from all family members, while considering the plans for the future.

Our experienced Succession Planning accountants understand the complex and emotional process of succession planning. With our team of specialists in this field the process will be less complicated.

If you think your family needs to start this process and you are not sure how to go about it – please call our Succession Planning Accountant, Rebecca Murray, at Moore Stephens today on 07 4995 6664 or 0438 240 274, or at [rmurray@moorestephens.com.au](mailto:rmurray@moorestephens.com.au)



HELMSMAN

Bimbadeen Q **N52**

LEAD GUN OF BRINKS 222K14 (P)  
 CSONKA OF BRINKS 30R4 (P)  
 MISS BRINKS UPPERCUT 30L18 (P)  
**S OAKLANDS AMBASSADOR** (P) (AI) (ET)  
 SUNDANCE OF BRINKS 392G9 (P)  
 MISS BRINKS SUNDANCE 392L (P)  
 MISS BRINKS TROOPER 392G18 (P)

LANCEFIELD MAGIC MANSO 8954 (S)  
 ELROSE MALE MODEL (P)  
 ELROSE MODEL 2ND (S)  
**D BIMBADEEN Q QO18** (P)  
 B/R NEW DESIGN 036 (S)  
 YHANBRAE NEW DESIGN 036 U41 (P)  
 YTHANBRAE N6 VLYN6 (S)

PURCHASER: \_\_\_\_\_ S

#21

REGISTERED

Ident: **BIM16FN52**  
 DOB: **22/10/2016**  
 % BI: **43.75%**

EBVs

GL	-1	29%
BW	0.9	46%
200D	16	58%
400D	25	59%
600D	34	52%
MCWT	34	40%
MILK	2	39%
SS	1.4	68%
CWT	16	47%

DATE	WEIGHT
Weaning	351kg
400D	560kg
SCROTAL	MOTILITY
40cm	80%

#22

REGISTERED

Ident: **BIM16RN77**  
 DOB: **03/12/2016**  
 % BI: **43.58%**

EBVs

GL	-1	29%
BW	2.9	46%
200D	29	59%
400D	48	60%
600D	54	53%
MCWT	51	41%
MILK	-1	37%
SS	2.6	69%
CWT	27	47%

DATE	WEIGHT
Weaning	368kg
400D	630kg
SCROTAL	MOTILITY
39cm	60%

HELMSMAN

Bimbadeen Q **N77**

LEAD GUN OF BRINKS 222K14 (P)  
 CSONKA OF BRINKS 30R4 (P)  
 MISS BRINKS UPPERCUT 30L18 (P)  
**S OAKLANDS AMBASSADOR** (P) (AI) (ET)  
 SUNDANCE OF BRINKS 392G9 (P)  
 MISS BRINKS SUNDANCE 392L (P)  
 MISS BRINKS TROOPER 392G18 (P)

TRANSFORMER OF BRINKS (P)  
 DOONSIDE BB176-01 (P) (AI)  
 DOONSIDE 277 (P) (AI)  
**D BIMBADEEN Q DO135** (P)  
 BRANGUS BULL (P)  
 BIMBADEEN Q P033 (P)  
 BIMBADEEN Q C142 (P)

PURCHASER: \_\_\_\_\_ S



HELMSMAN

# Bimbadeen Q N78

- LEAD GUN OF BRINKS 222K14 (P)
- CSONKA OF BRINKS 30R4 (P)
- MISS BRINKS UPPERCUT 30L18 (P)
- S **OAKLANDS AMBASSADOR** (P) (AI) (ET)
- SUNDANCE OF BRINKS 392G9 (P)
- MISS BRINKS SUNDANCE 392L (P)
- MISS BRINKS TROOPER 392G18 (P)
  
- GREENDALE UFFIZI (P) (ET)
- GREENDALE Y181 (P)
- GREENDALE QUASHED (P)
- D **BIMBADEEN Q GOZOO** (P)
- GREENDALE UGLI (P) (ET)
- BIMBADEEN Q Q019 (P)
- GREENDALE XSERT (P)

#23

REGISTERED

Ident: BIM16RN78  
 DOB: 21/10/2016  
 % BI: 41.26%

EBVs

GL	-0.7	30%
BW	1.4	47%
200D	19	58%
400D	37	59%
600D	45	53%
MCWT	47	41%
MILK	1	35%
SS	0.9	68%
CWT	23	47%

DATE	WEIGHT
Weaning	367kg
400D	648kg
SCROTAL	MOTILITY
38cm	80%

#24

REGISTERED

Ident: BIM16RN83  
 DOB: 06/12/2016  
 % BI: 42.41%

EBVs

GL		
BW		
200D		
400D		
600D		
MCWT		
MILK		
SS		
CWT		

DATE	WEIGHT
Weaning	273kg
400D	490kg
SCROTAL	MOTILITY
38cm	80%

HELMSMAN

# Bimbadeen Q N83

- LEAD GUN OF BRINKS 222K14 (P)
- CSONKA OF BRINKS 30R4 (P)
- MISS BRINKS UPPERCUT 30L18 (P)
- S **TELPARA HILLS MUNDINE 820J2** (P)(AI)
- BRINKS BRIGHT SIDE 607 L11 ET (P)
- TELPARA HILLS MISS L11 820D4 (P) (ET)
- CENTER MS BEST BET 820/R42 (S)
  
- GREENDALE KINSEY (P)
- GREENDALE TRACTION (P)
- GREENDALE NEGATE 661 (P)
- D **BIMBADEEN Q E29** (P)
- BRANGUS BULL (P)
- BIMBADEEN Q J115 (P)
- BIMBADEEN Q B122 (P)

PURCHASER: \_\_\_\_\_ S

PURCHASER: \_\_\_\_\_ S



HELMSMAN

Bimbadeen Q **N131 (AI)**

#25

REGISTERED

Ident: BIM16RN131  
 DOB: 15/07/2016  
 % BI: 39.54%

- CADENCE OF BRINKS (P)
- LEAD GUN OF BRINKS 222K14 (P)
- MISS BB NEW BIG EASY 222E55 (P)
- S **WASHINGTON OF BRINKS 302S47 (P)**
- BRIGHT SIDE OF BRINKS 789G5 (P)
- MS BRINKS BRIGHT SIDE 302L9 (P)
- MISS BRINKS GERONIMO 302H6 (P)
  
- BONOX 326 (P)
- BONOX 474 (P)
- BONOX 74 (P)
- D **BIMBADEEN Q K47 (P)**
- DOONSIDE BB176-01 (P) (AI)
- BIMBADEEN Q Q010 (P)
- BIMBADEEN Q D87 (P) (AI)

EBVs		
GL	-0.6	33%
BW	0.2	47%
200D	13	53%
400D	19	53%
600D	23	48%
MCWT	21	37%
MILK	-1	35%
SS	0.8	57%
CWT	13	43%

DATE	WEIGHT
Weaning	292kg
400D	494kg
SCROTAL	MOTILITY
36cm	70%

PURCHASER: \_\_\_\_\_ S

#26

HELMSMAN

Bimbadeen Q **N158**

REGISTERED

Ident: BIM16FN158  
 DOB: 07/12/2016  
 % BI: 49.97%

- CX CHIEF ADVANTAGE 143/L (P)
- CX HOME RUN 135/P (P)
- MS HS 135F/K (P)
- S **DOONSIDE FRANCHISE 1938 (P) (AI)**
- DUARRAN HARRISON (P)
- DOONSIDE 4941 (P)
- DOONSIDE RB3805-05 (P)
  
- BRANGUS BULL B62A38 (P)
- D **BIMBADEEN Q J315 (P)**
- BIMBADEEN BRANGUS COW (P)

EBVs		
GL	-2.1	30%
BW	-2.1	30%
200D	1	50%
400D	4	51%
600D	0	42%
MCWT	-6	26%
MILK	-1	66%
SS	-1	66%
CWT	3	36%

DATE	WEIGHT
Weaning	305kg
400D	495kg
SCROTAL	MOTILITY
34cm	60%

PURCHASER: \_\_\_\_\_ S



HELMSMAN

# Bimbadeen Q N163

CX CHIEF ADVANTAGE 143/L (P)  
 CX HOME RUN 135/P (P)  
 MS HS 135F/K (P)

S **DOONSIDE FRANCHISE 1938** (P) (AI)

DUARRAN HARRISON (P)  
 DOONSIDE 4941 (P)  
 DOONSIDE RB3805-05 (P)

BRANGUS BULL (P)

D **BIMBADEEN Q J1** (P)

BIMBADEEN BRANGUS COW (P)

PURCHASER:

S

#27

REGISTERED

Ident: BIM16FN163  
 DOB: 23/11/2016  
 % BI: 46.97%

EBVs

GL		
BW	-1.9	31%
200D	2	50%
400D	15	52%
600D	9	42%
MCWT	5	26%
MILK		
SS	0.9	66%
CWT	8	36%

DATE	WEIGHT
Weaning	301kg
400D	574kg
SCROTAL	MOTILITY
40cm	70%

#28

REGISTERED

Ident: BIM16RN165  
 DOB: 23/11/2016  
 % BI: 42.29%

EBVs

GL		
BW	-1.8	37%
200D	-1	56%
400D	0	55%
600D	3	47%
MCWT	3	31%
MILK	-2	25%
SS	-0.4	67%
CWT	2	40%

DATE	WEIGHT
Weaning	275kg
400D	498kg
SCROTAL	MOTILITY
35cm	70%

HELMSMAN

# Bimbadeen Q N165

CX CHIEF ADVANTAGE 143/L (P)  
 CX HOME RUN 135/P (P)  
 MS HS 135F/K (P)

S **DOONSIDE FRANCHISE 1938** (P) (AI)

DUARRAN HARRISON (P)  
 DOONSIDE 4941 (P)  
 DOONSIDE RB3805-05 (P)

PFR ICONS 707/6 (P)  
 DOONSIDE 553 (P) (AI)  
 DOONSIDE 243 (P)

D **BIMBADEEN Q FASHION** (P)

KOOROOMBA RED S26 (P)  
 BIMBADEEN Q K212 (P)  
 BIMBADEEN Q C10 (P)

PURCHASER:

S



HELMSMAN

Bimbadeen Q **N166**

CX CHIEF ADVANTAGE 143/L (P)  
 CX HOME RUN 135/P (P)  
 MS HS 135F/K (P)

S **DOONSIDE FRANCHISE 1938** (P) (AI)

DUARRAN HARRISON (P)  
 DOONSIDE 4941 (P)  
 DOONSIDE RB3805-05 (P)

BRANGUS BULL B62A38 (P)

D **BIMBADEEN Q JS** (P)

BIMBADEEN BRANGUS COW (P)

PURCHASER:

S

#29

REGISTERED

Ident: BIM16FN166  
 DOB: 07/12/2016  
 % BI: 49.97%

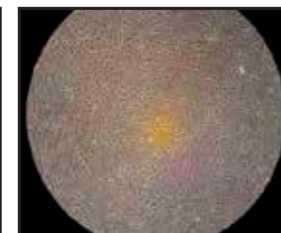
EBVs

GL		
BW	-2.1	30%
200D	0	50%
400D	9	51%
600D	4	42%
MCWT	-1	26%
MILK		
SS	0.4	66%
CWT	5	36%

DATE	WEIGHT
Weaning	299kg
400D	522kg
SCROTAL	MOTILITY
36cm	70%

# Monto Veterinary Services

Our vets are BULLCHECK accredited with the Australian Cattle Vets Association and can undertake all your bull testing requirements for stud, sale and paddock bulls.



BULLCHECK ACCREDITED | ON FARM SERVICES | CUSTOM SEMEN COLLECTION | FIXED TIME AI SERVICES | PREGCHECK ACCREDITED

Contact Phone: (07) 4166 1285

Email: [admin@montovetsurgery.com.au](mailto:admin@montovetsurgery.com.au)

Address: 8 Lister Street, MONTO QLD 4630

We're open 5 days a week, plus our after hours service provides you 24/7 assistance in emergencies

**CONTACT US**  
 We Provide professional and affordable health care for pets and livestock

# Bimbadeen Q N156

HELMSMAN  
#30

COMMERCIAL  
DOB: 02/12/2016

DATE	WEIGHT
Weaning	290kg
400D	530kg
SCROTAL	MOTILITY
34cm	70%

CX CHIEF ADVANTAGE 143/L (P)  
CX HOME RUN 135/P (P)  
MS HS 135F/K (P)  
S DOONSIDE FRANCHISE 1938 (P) (AI)  
DUARRAN HARRISON (P)  
DOONSIDE 4941 (P)  
DOONSIDE RB3805-05 (P)



DOONSIDE 565

D BIMBADEEN H 362

BIMBADEEN BRANGUS COW

PURCHASER: \_\_\_\_\_ S

# Bimbadeen Q N28

HELMSMAN  
#32

COMMERCIAL  
DOB: 7/10/2016

DATE	WEIGHT
Weaning	358kg
400D	618kg
SCROTAL	MOTILITY
36cm	70%

SUHN'S AFFIRMED 416N4 (P)  
CB HOMBRE 541T3 (P)  
MS BRINKS BRIGHT SIDE 541K28 (S)  
S TELPARA HILLS JACKMAN 541H17 (P)(AI)(ET)  
SINGLETARY OF BRINKS 675R (P)  
TELPARA HILLS MISS SINGLETARY 541E (P) (ET)  
MS BRINKS SUNDANCE 541M43 (P)



DOONSIDE BB176

D BIMBADEEN Q D133

BIMBADEEN Q M231

PURCHASER: \_\_\_\_\_ S

# Bimbadeen Q N23

HELMSMAN  
#31

COMMERCIAL  
DOB: 16/12/2016

DATE	WEIGHT
Weaning	273kg
400D	490kg
SCROTAL	MOTILITY
39cm	70%

SUHN'S AFFIRMED 416N4 (P)  
CB HOMBRE 541T3 (P)  
MS BRINKS BRIGHT SIDE 541K28 (S)  
S TELPARA HILLS JACKMAN 541H17 (P)(AI)(ET)  
SINGLETARY OF BRINKS 675R (P)  
TELPARA HILLS MISS SINGLETARY 541E (P) (ET)  
MS BRINKS SUNDANCE 541M43 (P)



BIMBADEEN Q L104

D BIMBADEEN Q 244

BIMBADEEN BRANGUS COW

PURCHASER: \_\_\_\_\_ S

# Bimbadeen Q N218

HELMSMAN  
#33

COMMERCIAL  
DOB: 22/11/2016

DATE	WEIGHT
Weaning	266kg
400D	475kg
SCROTAL	MOTILITY
TBA	TBA

SUHN'S AFFIRMED 416N4 (P)  
CB HOMBRE 541T3 (P)  
MS BRINKS BRIGHT SIDE 541K28 (S)  
S TELPARA HILLS JACKMAN 541H17 (P)(AI)(ET)  
SINGLETARY OF BRINKS 675R (P)  
TELPARA HILLS MISS SINGLETARY 541E (P) (ET)  
MS BRINKS SUNDANCE 541M43 (P)



D BIMBADEEN BRANGUS COW

PURCHASER: \_\_\_\_\_ S

# Bimbadeen Q N72

HELMSMAN  
#34

COMMERCIAL  
DOB: 05/11/2016

DATE	WEIGHT
Weaning	306kg
400D	495kg
SCROTAL	MOTILITY
35cm	60%

- LEAD GUN OF BRINKS 222K14 (P)
- CSONKA OF BRINKS 30R4 (P)
- MISS BRINKS UPPERCUT 30L18 (P)
- S **OAKLANDS AMBASSADOR** (P) (AI) (ET)
- SUNDANCE OF BRINKS 392G9 (P)
- MISS BRINKS SUNDANCE 392L (P)
- MISS BRINKS TROOPER 392G18 (P)

BIMBADEEN Q E118

D **BIMBADEEN Q P083**

BIMBADEEN Q H20



PURCHASER: \$

# Bimbadeen Q N88

HELMSMAN  
#35

COMMERCIAL  
DOB: 04/11/2016

DATE	WEIGHT
Weaning	277kg
400D	495kg
SCROTAL	MOTILITY
38cm	80%

- LEAD GUN OF BRINKS 222K14 (P)
- CSONKA OF BRINKS 30R4 (P)
- MISS BRINKS UPPERCUT 30L18 (P)
- S **TELPARA HILLS MUNDINE 820J2** (P)(AI)
- BRINKS BRIGHT SIDE 607 L11 ET (P)
- TELPARA HILLS MISS L11 820D4 (P) (ET)
- CENTER MS BEST BET 820/R42 (S)

BONOX 302

D **BIMBADEEN G12**

BIMBADEEN Q D16



PURCHASER: \$

# Bimbadeen Q N212

HELMSMAN  
#36

COMMERCIAL  
DOB: 07/12/2016

DATE	WEIGHT
Weaning	300kg
400D	552kg
SCROTAL	MOTILITY
38cm	70%

- S **BIMBADEEN BRANGUS BULL**
- D **BIMBADEEN BRANGUS COW**



PURCHASER: \$

# Bimbadeen Q N223

HELMSMAN  
#37

COMMERCIAL  
DOB: 22/11/2016

DATE	WEIGHT
Weaning	287kg
400D	514kg
SCROTAL	MOTILITY
35cm	60%

- S **BIMBADEEN BRANGUS BULL**
- D **BIMBADEEN BRANGUS COW**



PURCHASER: \$

# Bimbadeen Q N237

HELMSMAN  
#38

COMMERCIAL  
DOB: 05/12/2016

DATE	WEIGHT
Weaning	282kg
400D	483kg
SCROTAL	MOTILITY
38cm	80%

- S **BIMBADEEN BRANGUS BULL**
- D **BIMBADEEN BRANGUS COW**



PURCHASER: \$

Bimbadeen (7) **182**

HELMSMAN  
#39

COMMERCIAL  
DOB: 02/12/2016

DATE	WEIGHT
Weaning	286kg
400D	505kg
SCROTAL	MOTILITY
38cm	80%

S RAFF  
DAKOTA G277  
D BIMBADEEN  
BRANGUS  
COW



PURCHASER: \$

Bimbadeen (7) **251**

HELMSMAN  
#40

COMMERCIAL  
DOB: 07/12/2016

DATE	WEIGHT
Weaning	346kg
400D	626kg
SCROTAL	MOTILITY
43cm	70%

S BIMBADEEN  
BRANGUS  
BULL  
D BRAHMAN  
COW



PURCHASER: \$

**FARMstuff**

4992 3544 • 4166 1466

18 Dawson Hwy Biloea      11 Lister St Monto

*For the right stuff!*

# DJ's

## Steel & Concrete

Proudly  
Supporting  
**BIMBADEEN  
BRANGUS**



Bimbadeen Main Yards



**MONTO**  
4166 1747

**EIDSVOLD**  
4165 1762

**BILOELA**  
4992 2197

[www.djsteel.com.au](http://www.djsteel.com.au)

# LIVESTOCK AUCTION TERMS & CONDITIONS OF SALE

## CHAPTER ONE - PRELIMINARY

1. (a) A vendor is bound by these terms and conditions by offering livestock for sale by auction.  
(b) An agent (which includes an auctioneer) is bound by these terms and conditions by conducting an auction sale.  
(c) A buyer is bound by these terms and conditions by bidding at auction.  
(d) **Competition and Consumer Act (Cth) 2010**  
It is unlawful for parties that are, or otherwise would be, in competition with each other to make, or give effect to, a contract, arrangement or understanding that contains a provision relating to:
  - i. price-fixing; or
  - ii. restricting outputs in the production and supply chain; or
  - iii. allocating customers, suppliers or territories; or
  - iv. bid-rigging; or
  - v. collusive bidding.Large fines and other sanctions may be imposed for unlawful conduct.
2. (a) In these terms the expression auctioneer, agent, buyer and vendor respectively includes the servants, contractors and agents of each of them. The auctioneer, agent, buyer and vendor shall be wholly responsible for the acts and omissions of their respective servants, contractors and agents. The term "auctioneer" includes, so far as the law and context permits, the vendor's agent.  
(b) When used in these terms the expressions "companion animals" means all animals originating from the same property on a particular day. Where lots are split and sent to multiple establishments, then all of these animals shall be regarded as companions.
3. The following applies in interpreting these terms and conditions:
  - (a) The following words have the following meanings:  
Fees means all levies, charges, fees, costs and other expenses incurred or relating to these terms and conditions and the sale and purchase of livestock including, without limitation, transaction levies, yard and weigh dues, cartage, advertising and rebates, and whether paid for, or incurred, by the agent;  
Livestock means animals auctioned pursuant to these terms and conditions; and  
Price means the amount at which the lot has been sold to the buyer referred to in clause 7 of these terms and conditions
    - (i) plus any Fees and other expenses incurred in relation to the purchase of livestock that are payable by the buyer; and
    - (ii) plus any GST added in accordance with clause 12.
  - (b) These terms and conditions are subject to legislation or regulation in the State in which the auction is conducted and in the event of any conflict then the legislation or regulation will prevail. The provisions of these terms and conditions are in addition to, and do not derogate from, the duties and rights of vendors, agents and buyers set out in legislation and regulation in the State in which the auction is conducted.

## CHAPTER TWO - STANDARD TERMS OF SALE

4. Subject to any reserve price, and to the right, prior to the fall of the hammer, of the vendor to withdraw any lot without declaring the reserve, the highest bidder shall be the buyer.
5. The auctioneer has the right to bid on behalf of the vendor provided that right is notified prior to the commencement of the sale and is subject to State law.
6. A bidder cannot be made or accepted after the fall of the hammer unless, in accordance with clause 8, the auctioneer decides to put the lot up again.
7. Prior to the fall of the hammer the auctioneer shall announce the last bid and receive any further bids. The last price called by the auctioneer at the fall of the hammer shall be the amount at which the lot has been sold.
8. In the event of a disputed bid, the auctioneer is the sole arbitrator of the successful bidder or the auctioneer may decide to put the lot up again. The auctioneer's decision is final.
9. The auctioneer may refuse to accept any bid which, in the auctioneer's opinion, is not in the best interest of the vendor and need not give reasons for doing so.
10. A bidder shall be deemed to be a principal unless, prior to bidding, the bidder has given to the auctioneer a copy of written authority to bid for or on behalf of another person.
11. The successful bidder at a livestock auction sale must give to the auctioneer at the fall of the hammer:
  - (a) the purchaser's name; or
  - (b) the bid card number which identifies the purchaser; or
  - (c) the name of the person on whose behalf the successful bid was made; and
  - (d) the Property Identification Code (known as the "PIC") of destination.
12. The auction shall be conducted on the basis that the bid price shall be exclusive of Goods and Services Tax (GST). GST shall be added after the fall of the hammer for those sales subject to GST.
13. The vendor warrants;
  - (a) That the vendor has (or will have) the right to sell the livestock at the time of delivery; and
  - (b) That the purchaser will obtain title on completion of the purchaser's obligations under this contract including payment.
14. If a buyer does not comply with any of these terms and conditions, which includes the requirements of State law, any livestock knocked down to that buyer may be re-sold by public auction or private contract in whatever lots and manner the auctioneer decides. The re-sale may be with or without notice and shall be at the buyer's risk. The buyer is responsible for all loss and expense arising out of a re-sale and is not entitled to any resulting profit.
15. The buyer of livestock must pay the agent the full amount of the purchase price in immediate funds on receipt of a tax invoice. Payment is required prior to delivery unless some other time for payment is specified in an agreement between the buyer and the auctioneer that was made before the fall of the hammer. If, before delivery, payment has not been made then clauses 20 to 23 apply.
16. No person may bid unless, prior to the commencement of the sale, that person has made arrangements satisfactory to the auctioneer for payment for livestock purchased. If bids in breach of this condition are inadvertently accepted, delivery shall not be given until the purchase money is paid and any law, rule or practice to the contrary is accordingly negated as far as possible.
  - (a) Cattle sold on a liveweight basis that are weighed pre-sale are at the risk and expense of the buyer upon the fall of the hammer.
  - (b) Cattle sold on a liveweight basis that are weighed post-sale are at the risk and expense of the buyer immediately after weighing.
  - (c) All livestock other than cattle sold on a liveweight basis are at the risk and expense of the buyer upon the fall of the hammer.
18. (a) Subject to this clause the sale is complete on the fall of the hammer.  
(b) The time for rejection is the time commencing at the fall of the hammer and ending at the first of:
  - (i) delivery is taken by a representative of the buyer;
  - (ii) departure of the animal from the purchaser's delivery pen; or
  - (iii) one hour after the last animal is:
    - a. in the case of pre-sale weighing, sold; or
    - b. in the case of post-sale weighing, weighed.
- (c) During the time for rejection the buyer may reject any animal which is lame, blind or diseased where that condition existed prior to the fall of the hammer but could not be reasonably observed when the animal was in the selling pen.
- (d) If the purchaser rejects an animal during the time for rejection then the sale of that animal is cancelled and the animal is returned to the vendor or sold on such terms as any buyer and the agent may agree, after the agent has disclosed the reason for rejection to that buyer.

- (e) This subclause applies only to cattle which are sold in Queensland at auction for slaughter. The agent has responsibility for the prevention of loss or escape (but not death, sickness or injury) of those cattle from the time of the fall of the hammer, for delivery to and from the scales, to the buyer's delivery pen and onto the buyer's nominated transport. This responsibility ends at the earlier of those cattle boarding the buyer's nominated transport or sunset on the day after the sale. This subclause does not apply if the agent makes an announcement to that effect prior to sale.
19. (a) Subject to the right of rejection in Clause 18, all conditions and warranties expressed or implied by law are hereby excluded from the sale to the extent that the law allows. All lots are open for inspection prior to the commencement of the sale and are sold with all faults, if any. No compensation shall be given for any faults, imperfections, errors of description, number in or of any lots sold or otherwise.  
(b) Any claim or objection arising out of an error or misdescription in the provision of relevant information in terms of legislation or regulation concerning the National Livestock Identification Scheme (NLIS) must be made by 5:00pm on the seventh day after the fall of the hammer. No objection, requisition or claim against the vendor or agent in respect of such error or misdescription can be made after that time.  
(c) Any statements made by the vendor or the auctioneer whether in writing or orally to the effect that any female has been pregnancy tested or scanned positive shall mean and require only that a certificate in writing shall be supplied to the buyer signed by a qualified veterinary surgeon or certified scanner certifying that the said female has been tested or scanned on the date specified in the certificate and that in the opinion of the surgeon or scanner was pregnant on that date.  
(d) For slaughter cattle, the agent undertakes to make every reasonable effort to ensure that any NLIS cattle device number is transferred from the saleyard PIC to the purchaser's PIC on the NLIS database no later than midnight on the day of the sale.  
(e) For other slaughter livestock the agent undertakes to make every reasonable effort to ensure that the NLIS information is transferred from the saleyard PIC to the purchaser's PIC on the NLIS database no later than midnight on the day of the sale.  
(f) Where livestock has a food safety or market eligibility status derived from the National Vendor Declaration (NVD) and/or the NLIS/ERP database, the agent will inform the buyers by presale catalogue and/or announce the status prior to the offering of those lots.
20. If delivery is made to, or possession obtained by, the buyer or its representative before full payment of the Price, then until full payment is received, the buyer:
    - (a) does not acquire title to the livestock;
    - (b) holds the livestock as bailee only for the vendor;
    - (c) must act in a fiduciary capacity in its relationship with the vendor;
    - (d) must store the stock separately or so that they are readily distinguishable from other livestock owned by the buyer;
    - (e) is responsible for the safety and well being of the livestock;
    - (f) may make a bona fide sale for market value of any or all of the livestock. As between the buyer and the subsequent buyer, the sale shall be made by the buyer in its own name and not as agent for the vendor, however as between the vendor and buyer, the sale shall be made as bailee and agent for the vendor; and
    - (g) must keep and account for the proceeds of any subsequent sale separately from its other money and hold those proceeds, together with the benefits of any rights against subsequent buyers, on trust for the vendor.
  21. The purchaser agrees that:
    - (a) Clause 20 creates a registrable security interest under the Personal Property Securities Act (Cth) 2009 (PPSA);
    - (b) The Purchaser acknowledges the rights of the Seller (and/or the Agent if Clause 25 applies) to register a financing statement under the PPSA with respect to the security interest created by this clause;
    - (c) The Livestock are collateral for the purposes of the PPSA;
    - (d) to the extent permitted, the Purchaser waives any right the Purchaser has under the PPSA to receive notices; and
    - (e) the date upon which the security interest created by this clause comes into force is the first date on which livestock are delivered pursuant to this contract
  22. The buyer may not make any claim against the vendor for actions by the vendor or its agent under clauses 20 or 21 and indemnifies the vendor and its agent against any loss, damage, costs, expenses, penalties, fines or claims suffered by the vendor, the agent or any person or entity arising from the vendor exercising its rights under clauses 20 or 21.
  - 23.1 Clause 23 applies whenever the agent pays the vendor before being paid by the buyer, which the agent is not bound to do. The agent is then the del credere agent of the vendor at law.
  - 23.2 The vendor hereby gives notice to the buyer of the assignments referred to in clause 23.3.
  - 23.3 When this clause applies, in addition to any rights of the agent that arise by operation of the law, the parties agree that, subject to clause 23.5 the agent is subrogated to all rights of the vendor under these terms and conditions against the buyer.
  - 23.4 The vendor acknowledges that the agent may take enforcement, repossession or other action to recover any livestock for which the buyer has not paid in full, or the Price of such livestock, owing by the buyer under these terms and conditions:
    - (a) when this clause does not apply, as agent of the vendor (including by reselling the livestock); and
    - (b) when this clause applies, on the agent's own behalf exercising the rights of the vendor by subrogation or assignment under these terms and conditions (whether in the vendor's name or not) and, where title to the livestock has not passed to the agent, by selling the livestock as agent of the vendor without the agent having to account to the vendor for the proceeds of sale.
  - 23.5 The agent may at any time, assign, transfer, securitise or otherwise dispose of all or any of its rights under these terms and conditions and any debts created pursuant to it (including, without limitation, the rights assigned to it under clause 23.3).
  - 23.6 The vendor hereby irrevocably appoints the agent as the vendor's attorney to:
    - (a) do at any time and in any manner as the agent thinks fit all acts necessary or desirable to perfect or improve the rights and interests afforded, or intended to be afforded, to the agent under these terms and conditions; and
    - (b) appoint one or more sub-attorneys to do anything that the agent may do as the vendor's attorney.
  - 23.7. These terms and conditions do not render the agent liable to the buyer as vendor nor entitle the buyer to set off against the agent any right the buyer may have against the vendor or otherwise.
  - 23.8. The buyer acknowledges that the provisions of this clause 23 are intended solely for the benefit of the agent (and its assigns) and the vendor. The liabilities and obligations of the buyer will not be in any way affected:
    - (a) by this clause 23, other than as it expressly provides; or
    - (b) by the failure of the agent or the vendor or either of them to comply with the terms of this clause 23.
  - 23.9. The buyer must pay all amounts payable to the vendor or the agent under these terms and conditions without any deduction, withholding, set off or counterclaim whatsoever, whether the benefit of a deduction, withholding, set off or counterclaim is alleged to exist in favour of the buyer as against the vendor or the agent in any capacity whatsoever or any other person including any assignor of the vendor's or the buyer's interests under these terms and conditions.
  24. (a) The agent agrees that he is liable to pay to the vendor the Price, less such commission as is agreed between the vendor and the agent, and in the absence of any agreement such amount as is reasonable, and less the Fees that are payable by the vendor that were incurred by the agent on behalf of the vendor in relation to the sale of the livestock.  
(b) In the event that the buyer pays the Price or part of it direct to the vendor then the agent has no liability to the vendor for the amount of such payment. Further, if the agent pays the vendor any amount which the buyer also pays direct to the vendor in respect of the same livestock, then the vendor must repay the agent that amount and the agent may debit that amount to an account held in the name of the vendor by the agent.  
(c) Regardless of whether or not a sale has occurred the agent may, but is not under obligation so to do, instead of deducting payments owed to it by the vendor, debit the amount of the commission and fees to an account held in the name of the vendor by the agent.
25. (a) The auctioneer has been retained by the vendor as auctioneer for the purpose of selling the livestock comprised in the lots. The terms of engagement between the auctioneer and the vendor do not extend to the provision of advice by the auctioneer to the vendor in relation to the safety or otherwise of the sale ring, the saleyards and the surrounding environments.  
(b) The vendor, the agent and the buyer agree to comply with their several duties under the Australian Animal Welfare Standards and Guidelines for the Land Transport of Livestock and further to consign, manage, receive, transport and handle livestock in accordance with any other or additional requirements of animal welfare legislation specific to the jurisdiction in which livestock are consigned, managed, received, transported and handled in the course of the auction process.

# Notes

## CHAPTER THREE - VENDOR WARRANTY FOR CORRECT PRESENTATION AND DECLARATION

26. This chapter applies only in the case of livestock and their companion animals sold at auction for slaughter when the buyer is the slaughterer and the livestock are transported direct from the sale yard to the meatworks at which they are slaughtered. This chapter does not apply if the buyer is a trader who subsequently resells the livestock to a slaughterer. A slaughterer is any person who pays the AMPC Processor levy.
27. The warranty of a vendor is that livestock and their companion animals offered for sale at auction:
  - (a) pass government and other regulatory authority requirements and inspections at the time of slaughter;
  - (b) are of merchantable quality;
  - (c) carry an NLS device in accordance with State law;
  - (d) in the case where a representation has been made in the pre-sale catalogue that the livestock have particular characteristics or are fit for a particular purpose or market, and such representations are based on information in any document, the livestock will have those characteristics or will be fit for the particular purpose or market; and
  - (e) all information in any document provided by the vendor is true, complete and correct in all material respects.
28. In the event of a breach by the vendor of the vendor's warranty and provided such breach is notified by the buyer to the agent by 5:00pm on the 7th day after the fall of the hammer then the buyer is not liable to pay the portion of the Price of such of the vendor's livestock to which the breach applies.
29. However if the breach by the vendor is such that the livestock are not rejected outright but are instead downgraded then the buyer will pay the value of the livestock at their next highest and best use.
30. In the case of a breach by the vendor of the vendor's warranty then the vendor will also be liable to the buyer for any further losses which the buyer might establish but the buyer will take all reasonable steps in co-operation with the agent and vendor to mitigate both the effect of the breach and the amount of any loss.
31. Where a sentinel animal of a lot tests positive for chemical residue, or foreign material contamination and provided such test is certified and notified as required by these vendor warranty terms, then:
  - (a) the buyer will be entitled to delay payment for the price of all livestock in that lot only; or
  - (b) the vendor has the option, at the vendor's cost, of collecting the companion animals, if allowed by law; or of having the livestock slaughtered in which event the risk of further condemnations will be that of the vendor. Where product integrity is potentially jeopardised, the Processor has the right to refuse slaughter and send the livestock back to the consigning property at the vendor's cost.
32. The auctioneer is liable to the buyer in respect of any breach of the vendor's warranty arising out of:
  - (a) any error, by the auctioneer, of transcription of information from the NVD completed by the vendor to the pre-sale catalogue or the buyers post-sale summary;
  - (b) any failure by the auctioneer to notify the buyer, prior to bidding, of any breach by the vendor of the warranty of the vendor if the buyer establishes that the agent knew of such breach prior to the sale; and
  - (c) any failure by the auctioneer to announce prior to bidding, or disclose in the pre-sale catalogue, that the vendor has failed to provide a NVD that is complete in all material aspects.

## CHAPTER FOUR - OWNERS RISK FOR CONDITION OF CATTLE

33. This chapter applies only in the case of cattle and their companion animals sold at auction for slaughter when the buyer is the slaughterer and the cattle are transported direct from the sale yard to the meatworks at which they are slaughtered. This chapter does not apply if the buyer is a trader who subsequently resells cattle to a slaughterer. A slaughterer is any person who pays the AMPC Processor levy.
34. Owners risk reflects the producer's responsibility to provide slaughter cattle for sale that are fit for human consumption. Cattle are fit for human consumption if they are not condemned as unfit by government. Owners risk applies if the condemnation is due to a condition in the animal which the buyer establishes, by the relevant government certificate, existed prior to the fall of the hammer.
35. A buyer with the benefit of owners risk protection is not liable to pay the Price of that animal to the vendor. The buyer remains nevertheless liable for all costs incurred after the fall of the hammer in transport, slaughter, testing and disposal of the animal.
36. Owners risk protection is available to the buyer of cattle to which this chapter applies if all of the following are satisfied:
  - (a) a certificate is issued by government which states the relevant NLS RFID tag number and PIC, the date of the certificate, the reason for condemnation and that the reason for condemnation existed prior to the fall of the hammer;
  - (b) the certificate is received by the selling agent either in its original form or by fax or electronic communication in the form of data, text or imaging by 5:00pm on the 7th day after the fall of the hammer; and
  - (c) if the condemnation is due to chemical residue the certificate follows testing in a government approved laboratory which establishes maximum residue limits in excess of the Australian limit.
37. Owners risk does not apply, and the buyer must pay for the cattle, if the reason for condemnation is any of bruising, fever, partial condemnation or emaciation.

## CHAPTER FIVE - NOTICES REQUIRED BY LEGISLATION

### NSW Property, Stock and Business Agents Act 2002 Warnings

Penalties for collusive practices. It is an offence against the Property, Stock and Business Agents Act 2002 for a person to do any of the following as a result of a collusive practice, or to induce or attempt to induce another person by a collusive practice to do any of the following:

- (i) to abstain from bidding; or
- (ii) to bid to a limited extent only; or
- (iii) to do any other act that might prevent free and open competition.

Severe penalties may be imposed on persons convicted of collusive practices.

The auctioneer has the right to make one bid on behalf of the vendor if the auctioneer clearly and precisely announces that fact prior to the sale.

**Tasmania Legislation.** An auctioneer conducting a public auction must not appear to acknowledge the making of a bid if no bid was made. A person must not participate in collusive practices by way of making or receiving an unlawful promise to abstain from bidding, not to bid except to a limited extent or do any other thing which may prevent free and open competition.

### WA Auction Sales Act 1973 s31 NOTICE.

It is an offence to:

- (i) induce or attempt to induce another person to abstain from bidding by means of a promise, expressed or implied, that the other person will have the right to elect to take over as buyer or to toss or draw lots to establish who is to become the owner;
  - (ii) abstain or agree to abstain from bidding as a result of such a promise;
  - (iii) knowingly enter or permit or cause to be entered in the auctioneer's record any name other than that of the actual successful bidder;
  - (iv) enter in the auctioneer's record the name of the buyer other than that of the actual successful bidder; or
  - (v) in the case of successful bidder supply wrong information as to the name of the buyer to the auctioneer or to any person, firm or corporation on whose behalf the sale is conducted.
- The vendor, or any person on behalf of the vendor, or the auctioneer have the right to make no more than three bids.

© FEBRUARY 2017 Australian Livestock & Property Agents Association Limited All rights reserved.

Unauthorised reproduction in whole or in part is an infringement of copyright.

These Livestock Auction Terms & Conditions of Sale are provided to ALPA members as recommended terms and conditions only.



CATALOGUE PRODUCED BY ROLLING DESIGNS 0429 133 349

© All artwork, photographs and content remain the property of Bimbadeen Brangus and Rolling Designs are protected by Australian and International copyright laws. Unauthorized copying and/reproduction is prohibited.

While all care has been taken to ensure that information in this catalogue is accurate, Bimbadeen Brangus and Rolling Designs take no responsibility for any mistakes and further actions taken by any party resulting from any mistake.



# BUYERS INSTRUCTION



NAME \_\_\_\_\_

ADDRESS \_\_\_\_\_

\_\_\_\_\_ P/CODE \_\_\_\_\_

PHONE \_\_\_\_\_ MOBILE \_\_\_\_\_

EMAIL ADDRESS \_\_\_\_\_

LOTS PURCHASED \_\_\_\_\_

DESTINATION ADDRESS (FOR PERMIT) \_\_\_\_\_

BID CARD NO.

NO. OF LOTS PURCHASED

# Thank You

*We greatly appreciate your attendance and support of the 2018 Bimbadeen Sale.*

*Thank you to those who are returning to purchase more Bimbadeen bloodlines for their herds, and a big welcome to those who are taking home their first Bimbadeen sires.*

*We appreciate the team effort put in by all who have contributed into this sale.*

*We invite you to stay on after the sale to help celebrate a milestone birthday for Bimbadeen's longtime co-studmaster, Barbara Burnham.*

DESTINATION	_____	NLIS PIC													
-------------	-------	----------	--	--	--	--	--	--	--	--	--	--	--	--	--

DELIVERY  OWNERS TRANSPORT

CARRIER \_\_\_\_\_ PICK UP TIME/DATE \_\_\_\_\_

INSURANCE  YES PERIOD REQUIRED \_\_\_\_\_  NO

INVOICE TO \_\_\_\_\_

IS REGISTRATION TRANSFER REQUIRED?  YES  NO

IF YES, NAME & ADDRESS FOR TRANSFER OF REGISTRATION

\_\_\_\_\_

\_\_\_\_\_

\_\_\_\_\_

SIGNED \_\_\_\_\_ DATE \_\_\_\_\_

**NOTE:** This Buyers Instruction Sheet **MUST** be completed in FULL and SIGNED by the Buyer or their Authorised Representative

2017  
SALE  
SNAPS



Top-price buyers,  
Rob & Sarah Cook  
and family

MAKE SURE YOU GET YOUR ENTRY IN  
BEFORE 9.30am on SALE DAY  
Drawing of the winner will take place  
before the live auction commences.



PLEASE NOTE:

- Single sire & bulk buyers welcome
- Discount applies to purchases of five or more bulls at this sale





[BIMBADEENBRANGUS.COM](http://BIMBADEENBRANGUS.COM)