

BIMBADEEN

2023 GENETICS SALE

BLACK & RED BRANGUS
70 BULLS



SEMEN TESTED • PEDIGREES • BREEDPLAN EBVS • DNA

TUESDAY, 19 SEPTEMBER

AUCTION FROM 11AM ON-PROPERTY & ONLINE



BIMBADEEN GENETICS SALE



Our largest offering! **70 BRANGUS BULLS**

TUESDAY, 19 SEPTEMBER 2023

INSPECTIONS FROM 9AM AUCTION COMMENCES 11AM

ON-PROPERTY AT 'ARTHUR'S KNOB'

ONLINE WITH ELITE LIVESTOCK

Amanda & Mark Salisbury

'Upson Downs', MS 85, Eidsvold Qld 4627

p 07 4167 5141 m 0427 141 919 e bimbadeen@skymesh.com.au



Randall Spann 0429 700 332
Simon Clark 0428 498 411



Andrew Cavanagh 0467 662 452
Brendan Kelly 0400 997 289

*For all Seasons
and any Country*

bimbadeenbrangus.com



Welcome

The 2023 Bimbadeen Genetics Sale catalogue is a particularly exciting one to introduce, with a record 70 young sires on offer for your selection.

There is something for everyone in this offering – with a great range of black Brangus bulls (low through to high content) alongside a very strong red contingent. Within this catalogue, you will see 'lines' of bulls suitable for the bulk buyer, along with a good number of potential stud sires.

Leading the way as in our reference sire for 2023 will be Bimbadeen MEMPHIS, with his first cohort of natural-mated progeny hitting the sale ring. This super-fertile sire has really put his stamp across his offspring, with his terrific trademark Brangus style (strong polled heads, athletic frames and great natures). Memphis has an incredible 19 sons in this sale (and is still working at the age of 8).

Forest Hills FAIR DINKUM 1168 has been a quiet achiever for us – with 7 sons in the 2023 sale, including the super-quiet, super-growthy Bimbadeen TITAN T9.

Another home-bred bull providing his first exciting line of progeny for sale is retained sire Bimbadeen QANTAS Q137. Renown for his imposing frame and enormous capacity reflected in his outstanding weight and yield EBVs, Qantas also offers a beautiful calm temperament.

Bimbadeen PILOT P33 sons, as usual, provide incredible frame and growth for buyers looking to inject more size into their herd. Our heaviest and growthiest bull (Bimbadeen TEXAS T163) is an example of this sire's impressive influence.

We also have a selection of exciting IVF bulls this year - out of quality Brahman females we invested in recently (from Akama and Cambil studs), by great Brangus sires (Bimbadeen QUARTZ (IVF) and Oaklands AMBASSADOR (ET)). If you are chasing great skin and a bit more bos indicus style, these lots are well worth checking out.



As always, we have gathered the data and done the work to ensure buyers have all the tools they need to make the best decisions for their breeding programs. All lots have:

- BreedPlan results, with scrotals and weights taken regularly in their contemporary groups for easy comparisons.
- DNA results with sire verification (PV where possible) along with poll and coat results.
- Semen-test results (motility and morphology)
- Been vaccinated for tick fever, 5-in-1, vibrio, 3-day and botulism.

Bimbadeen has been involved in data-based programs for many years (BreedPlan and DNA testing since the 1990s). We are big believers in using these comparative and science-based measures for our own references, as well as for our clients.

We also believe strongly that single-trait selection (weights only, frame only, etc) can be quite detrimental to long-term breeding plans. Phenotype is as important as EBVs and genotype – sires (and their progeny) MUST be able to walk and 'do the job' in all conditions. Balance is absolutely key.

We are particularly proud of the temperament in this year's draft – something we have been working on for a number of years.

We strongly encourage all buyers to look closely at their cow herds to determine what combination of results are required – more frame, more finishing ability, cleaner skin, tidier underline? You are always welcome to talk to us about your breeding needs, and we will work with you to ensure you select the bulls that are right for your herd.

You are warmly invited to book a pre-sale inspection of the Bimbadeen Sale team – we love doing personal sale bull walk-throughs with our clients. This one-on-one experience allows you to really get to see each animal and feel free to ask the questions that assist your sire purchasing.

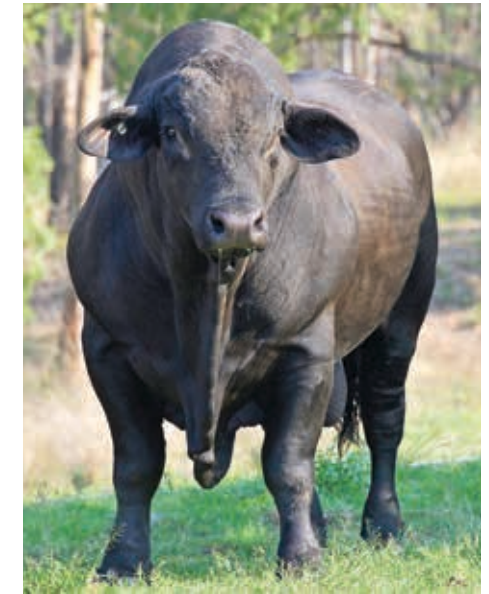
Bimbadeen MEMPHIS - in show condition (age 3) at bottom, and below in breeder paddock (age 6) at right.



Videos of all lots will be available online closer to Sale Day, and if you are not able to make it on September 19, we will be covered online by Elite Livestock Auctions.

We look forward to talking with you soon.

Cheers, Mark & Amanda Salisbury



Buyer Information

LOCATION

On-property at sale complex at 'Arthur's Knob' house. Smoko and lunch will be available. Prior inspections by appointment.

CONTACT INFO

Mark Salisbury

p. 07 4167 5141 m. 0427 141 919
e. mark@bimbadeenbrangus.com
w. bimbadeenbrangus.com
f. facebook.com/Bimbadeen

BULL PREPARATION

All bulls have been run on native grasses and supplemented with a silage and barley mix (recommended by a nutritionist).

HEALTH

All lots are visually vet* inspected, and have been vaccinated for Tick Fever, Vibrio, Botulism, 3-Day and treated twice with 5 in 1.

FERTILITY

Dr Stacey Rae (Monto Veterinary Services) has crush-side tested, done scrotal measures, and taken morphology samples from all bulls.

SUPPLEMENTARY SHEETS

Will be available on sale day, and will include current weights and scan data (EMA, rib and rump fat, marbling and semen results).

MOVEMENT OF BULLS

Cattle will be clean on sale day ready for immediate transport (with an inspector available on the day).

DELIVERY

Bimbadeen will deliver purchased sale lots to major saleyards, where it fits with delivery runs in Queensland. We will assist with organising transport to other areas.

GOT A QUESTION?

The Bimbadeen Team is available via phone or Facebook messenger.

Pedigrees and accompanying animal information in this catalogue are represented to the best of the vendors' knowledge at the time of publication. The Vendors, Agents and Australian Brangus Cattle Association bear no responsibility for errors or accidental misrepresentation. Where sires have been genetically verified, it will be indicated with (SV) or (PV) for full parent verification (at the bottom of information panel) on lot pages in this catalogue.

BULK BUYER DISCOUNT

Buyers purchasing 5 or more bulls will be eligible for a 5% discount.

INSURANCE

All lots become the property of the buyer from the fall of the hammer - we highly recommend all buyers take out insurance immediately upon purchase. Please arrange with agent on the day. (See Buyers Instructions, p93).

SALE DAY PHONE

There is limited phone connection via wifi at the sale location. If you cannot attend and would like to bid via phone please contact our agents (p1). Outside agents welcome.

OUTSIDE AGENTS REBATE

A rebate of 5% commission will be paid to agent when:

- Accompanies a client to the sale; or
- Attends the sale and purchases on a client's behalf; and
- Must settle within 7 days

SETTLING YOUR NEW BULL

Your new sire will be leaving a familiar environment and mob, and will arrive to strange situation at your property.

The truck ride can sometimes be challenging for a young animal, especially if he is travelling on his own. If you are not putting him directly into a cow herd, it's a great technique to ensure he has company - a cow or a steer waiting for him.

We treat our bulls with great respect and make a habit of handling them quietly - we recommend you do the same. Each bull has their own personality and flight zone, but care has been taken in Bimbadeen's selection to ensure there are no general temperament issues.

Directions

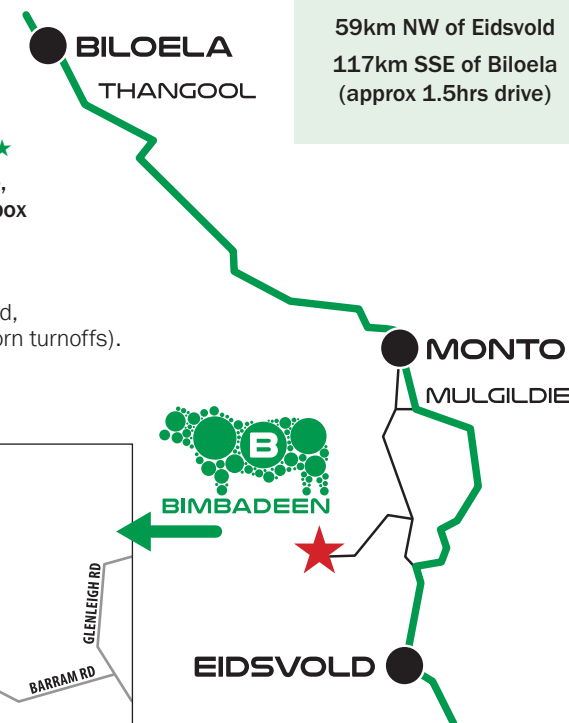
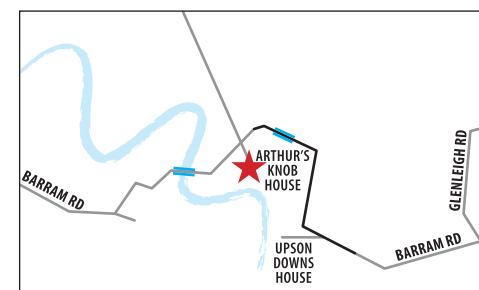
'ARTHUR'S KNOB' SALE COMPLEX

50km SW of Monto
59km NW of Eidsvold
11.7km SSE of Biloela
(approx 1.5hrs drive)

★ NOTE - SALE VENUE LOCATION ★

The sale is at Arthur's Knob house, 0.5km south of the property mailbox at 1811 Barram Road.

We will signpost directions from the Burnett Highway (Old Rawbelle Road, Mulgildie and Wuruma Dam/Abercorn turnoffs).



ACCOMMODATION

If you require accommodation we recommend that you book early.

From the North

Silo Motor Inn
Hotel Settlers
Sun Valley Motel

BILOELA

07 4992 5555
07 4992 2933
07 4992 1281

From the South

On the Corner Motel
Star Hotel

EIDSVOLD

07 41651207
07 4165 1109

Central

Colonial Motor Inn
Three Moon Hotel
Caravan Park

MONTO

07 4166 1377
07 4166 1777
07 4166 1492

Billabong Motor Inn

MUNDUBBERA

07 4165 4533

FLIGHTS

Thangool - LINK Airways
www.linkairways.com

1300 851 269

© All artwork, photographs and content remain the property of Bimbadeen Cattle Co and Cattlelogue Queen and are protected by Australian and International copyright laws. Unauthorized copying or reproduction is prohibited.

All reasonable care to ensure that the information provided in this catalogue is correct at the time of publication. Neither Bimbadeen Cattle Co, Cattlelogue Queen or Agents makes any representations for accuracy, reliability, or completeness of any information provided in this catalogue and does not assume any responsibility for using or interpreting the information included in this catalogue. You are encouraged to seek independent verification of any information contained in this catalogue before relying on such information.



cattleloguequeen.com.au

EBVs Explained

GL - Gestation Length (days) is an estimate of the time from conception to the birth of the calf and is based on AI records. Lower (negative) GL EBVs indicate shorter gestation length and therefore easier calving and increased growth after birth.

BW - Birth Weight EBV (kg) is based on the measured birth weight of progeny, adjusted for dam age. The lower the value the lighter the calf at birth and the lower the likelihood of a difficult birth. This is particularly important when selecting sires for use over heifers.

200D - 200 Day Growth EBV (kg) is calculated from the weight of progeny taken between 80 and 300 days of age. Values are adjusted to 200 days and for age of dam. This EBV is the best single estimate of an animal's genetic merit for growth to early ages.

400D - 400 Day Weight EBV (kg) is calculated from the weight of progeny taken between 301 and 500 days of age, adjusted to 400 days and for age of dam. This EBV is the best single estimate of an animal's genetic merit for yearling weight.

600 - 600 Day Weight EBV (kg) is calculated from the weight of progeny taken between 501 and 900 days of age, adjusted to 600 days and for age of dam. This EBV is the best single estimate of an animal's genetic merit for growth beyond yearling age.

MCWT - Mature Cow Weight EBV (kg) is based on the cow weight when the calf is weighed for weaning, adjusted to 5 years of age. This EBV is an estimate of the genetic difference in cow weight at 5 years of age and is an indicator of growth at later ages and potential feed maintenance requirements of the females in the breeding herd. Smaller, or more moderate EBVs are generally more favourable.

EBVs shown in the catalogue are for JULY 2023.

These will be updated after printing and major changes noted in supplementary sheets.

Raw data we collect for Breedplan includes weights: weaning, 400 and 600 days, scrotal size and scans.

All cows are expected to calve naturally in their breeding paddocks - it is rare for us to have to assist a birth (and we note where this occurs).

The Mature Cow Weight EBV may also be used by steer breeders wishing to grow animals out to a larger weight.

MILK - Milk EBV (kg) is an estimate of an animal's milking ability. For sires, this EBV indicates the effect of the daughter's milking ability, inherited from the sire, on the 200 and 400 day weights of her calves. For dams, it indicates her own milking ability.

SS - Scrotal Size EBV (cm) is calculated from the circumference of the scrotum, measured in centimetres and adjusted to 400 days of age. This EBV is an estimate of a sire's genetic merit for scrotal size and is positively correlated to age of puberty in female progeny.

Days to Calving (days) This EBV indicates the fertility of the daughters of the sire. It is the time interval between the date when the female is first exposed to a bull in a paddock mating to the day when she subsequently calves.

A negative EBV for days to calving indicates a shorter interval from bull-in date to calving and therefore higher fertility.

CWT - Carcase Weight EBV (kg) is based on abattoir carcase records and is an indicator of the genetic differences in carcase weight at the standard age of 650 days.

Eye Muscle Area EBV (sq cm) is calculated from measurements from live animal ultrasound scans and from abattoir carcase data, adjusted to a standard 300 kg carcase. This EBV estimates genetic differences in eye muscle area at the 12/13th rib site of a 300 kg dressed carcase. More positive EBVs indicate better muscling on animals. Sires with relatively higher EMA EBVs are expected to produce better muscled and higher percentage yielding progeny at the same carcase weight than will sires with lower EMA EBVs.

Rib Fat and Rump Fat EBVs (mm) are calculated from measurements of subcutaneous fat depth at the 12/13 rib site and the P8 rump site (from live animal ultrasound scans and from abattoir carcasses) and are adjusted to a standard 300 kg

carcase. These EBVs are indicators of the genetic differences in fat distribution on a standard 300 kg carcase. Sires with low, or negative, fat EBVs are expected to produce leaner progeny at any particular carcase weight than will sires with higher EBVs.

Retail Beef Yield EBV (%) indicates genetic differences between animals for retail yield percentage in a standard 300 kg carcase. Sires with larger EBVs are expected to produce progeny with higher yielding carcasses.

Intramuscular Fat EBV (%) is an estimate of the genetic difference in the percentage of intra-muscular fat at the 12/13th rib site in a 300kg carcase. Depending on market targets, larger more positive values are generally more favourable.

Breed Values

BRANGUS BREEDPLAN - PERCENTILE BANDS FOR 2021 BORN CALVES

	BIRTH		GROWTH				FERTILITY		CARCASE					INDEXES		
	Gest. Length (days)	Birth Wt. (kg)	200 Day Wt. (kg)	400 Day Wt. (kg)	600 Day Wt. (kg)	Mat Cow Wt. (kg)	Milk (kg)	Scrotal Size (cm)	Carcase Wt. (kg)	EMA (sq cm)	Rib Fat (mm)	Rump Fat (mm)	Retail Beef Yield (%)	IMF (%)	Export (\$)	Domestic (\$)
Top	-4.2	-4.7	+35	+62	+75	+86	+6	+4.0	+40	+5.1	+4.6	+5.7	+2.8	+1.5	+57	+55
Top 1%	-2.6	-2.1	+27	+49	+54	+54	+3	+2.8	+27	+3.7	+1.9	+2.3	+1.6	+0.8	+42	+44
Top 5%	-1.9	-1.6	+23	+41	+45	+44	+2	+2.1	+23	+2.6	+1.1	+1.4	+1.1	+0.6	+36	+37
Top 10%	-1.5	-1.4	+20	+36	+39	+38	+1	+1.8	+21	+2.2	+0.8	+1.0	+0.9	+0.5	+32	+34
Top 15%	-1.3	-1.2	+18	+33	+36	+34	+0	+1.6	+19	+2.0	+0.7	+0.8	+0.8	+0.4	+30	+31
Top 20%	-1.2	-1.1	+16	+31	+33	+31	+0	+1.4	+18	+1.8	+0.6	+0.7	+0.7	+0.4	+28	+28
Top 25%	-1.1	-1.0	+15	+28	+30	+28	+0	+1.2	+17	+1.7	+0.5	+0.5	+0.6	+0.3	+26	+27
Top 30%	-1.0	-0.9	+13	+26	+27	+25	-1	+1.0	+16	+1.6	+0.4	+0.4	+0.5	+0.3	+24	+25
Top 35%	-0.9	-0.7	+13	+24	+25	+23	-1	+0.8	+15	+1.5	+0.3	+0.3	+0.5	+0.3	+23	+23
Top 40%	-0.8	-0.6	+11	+23	+23	+21	-1	+0.6	+14	+1.4	+0.2	+0.2	+0.5	+0.3	+21	+22
Top 45%	-0.7	-0.4	+10	+21	+21	+19	-1	+0.5	+13	+1.3	+0.2	+0.2	+0.4	+0.2	+19	+20
Top 50%	-0.7	-0.3	+9	+19	+19	+17	-2	+0.4	+12	+1.2	+0.1	+0.1	+0.4	+0.2	+18	+19
Top 55%	-0.6	-0.2	+9	+18	+17	+15	-2	+0.2	+11	+1.1	+0.1	+0.0	+0.3	+0.2	+17	+17
Top 60%	-0.5	+0.0	+8	+16	+15	+13	-2	+0.1	+10	+1.0	+0.0	+0.0	+0.3	+0.2	+16	+16
Top 65%	-0.5	+0.2	+7	+15	+14	+12	-2	+0.0	+9	+0.9	-0.1	-0.1	+0.2	+0.2	+14	+15
Top 70%	-0.4	+0.3	+6	+13	+12	+10	-3	-0.1	+9	+0.8	-0.1	-0.2	+0.2	+0.1	+13	+14
Top 75%	-0.3	+0.5	+5	+12	+11	+8	-3	-0.2	+8	+0.7	-0.2	-0.3	+0.1	+0.1	+12	+13
Top 80%	-0.2	+0.7	+5	+10	+9	+7	-4	-0.3	+7	+0.6	-0.3	-0.4	+0.0	+0.1	+11	+12
Top 85%	-0.2	+1.0	+4	+9	+7	+4	-4	-0.4	+6	+0.4	-0.4	-0.5	+0.0	+0.0	+9	+10
Top 90%	+0.0	+1.3	+3	+6	+5	+1	-5	-0.5	+4	+0.3	-0.6	-0.7	-0.1	+0.0	+7	+8
Top 95%	+0.2	+1.9	+1	+3	+2	-3	-6	-0.8	+2	+0.0	-0.9	-1.1	-0.3	-0.2	+5	+6
Top 99%	+0.6	+3.0	-1	-1	-4	-11	-8	-1.5	+0	-0.7	-1.5	-1.9	-0.7	-0.4	+1	+2
Low	+2.4	+4.5	-7	-13	-20	-32	-11	-3.2	-4	-2.4	-2.4	-3.0	-1.7	-1.0	-10	-8

Genetic Tests

All Bimbadeen sale lots have had the 'Brangus Bundle' DNA testing for the 2023 sale - this involves testing samples for the poll gene, coat colour gene, the tenderness gene, sire and parent verification.

COAT

ED	Homozygous dominant black
ED/e	Dominant black/recessive red
ED/ E+	Dominant black/wildtype
E+/e	Wildtype/recessive red
E+/ E+	Homozygous wildtype
e/e	Homozygous recessive red

PARENT VERIFICATION

Each animal's unique genetic fingerprint is evaluated against the fingerprint of its expected parents. Multiple 'possible' sires can be nominated for each animal with matches confirmed or ruled out after analysis. Marked **VS** (Verified to Sire) or **VP** (Verified to Parents) in info bars on each lot.

POLL

When reporting Poll test results from a SNP based test, the results will be reported as below:

Result	Interpretation	Animal's Appearance
PcPc	Homozygous Poll (PP)	Predominately Polled (occasional scurs)
PcPf		
PfPf		
HPc	Heterozygous Poll (PH)	Polled or Scurred
HPf		
HH	Horned (HH)	Horned

Mating outcomes (statistically): Pc and Pf are interchangeable for 'P' in the graphic below.

<table border="1"><tr><td>P</td><td>P</td></tr><tr><td>P</td><td>PP</td></tr><tr><td>P</td><td>PP</td></tr></table>	P	P	P	PP	P	PP	PP x PP 100% progeny will be PP polled	<table border="1"><tr><td>P</td><td>P</td></tr><tr><td>H</td><td>PH</td></tr><tr><td>H</td><td>PH</td></tr></table>	P	P	H	PH	H	PH	PP x HH 100% progeny will be PH polled
P	P														
P	PP														
P	PP														
P	P														
H	PH														
H	PH														
<table border="1"><tr><td>P</td><td>P</td></tr><tr><td>P</td><td>PP</td></tr><tr><td>H</td><td>PH</td></tr></table>	P	P	P	PP	H	PH	PP x PH 50% progeny will be PP polled, 50% will be PH polled	<table border="1"><tr><td>P</td><td>H</td></tr><tr><td>P</td><td>PP</td></tr><tr><td>H</td><td>PH</td></tr></table>	P	H	P	PP	H	PH	PH x PH 50% progeny will be PH polled, 25% will be PP polled, 25% will be HH horned
P	P														
P	PP														
H	PH														
P	H														
P	PP														
H	PH														
<table border="1"><tr><td>P</td><td>H</td></tr><tr><td>H</td><td>PH</td></tr><tr><td>H</td><td>PH</td></tr></table>	P	H	H	PH	H	PH	PH x HH 50% progeny will be PH polled, 50% will be HH horned	<table border="1"><tr><td>H</td><td>H</td></tr><tr><td>H</td><td>HH</td></tr><tr><td>H</td><td>HH</td></tr></table>	H	H	H	HH	H	HH	HH x HH 100% progeny will be HH horned
P	H														
H	PH														
H	PH														
H	H														
H	HH														
H	HH														

SEMEN TESTS

More information in supp sheets.

Semen testing includes crushside (motility) and lab (morphology) tests.

All bulls have passed with general results indicated in this catalogue in sidebars.

Motility: ✓ for pass (>60%).

Morphology: ✓ for single sire (>70%) and **Q** for Qualified (50-70%).

HOW TO REGISTER with ELITE LIVESTOCK AUCTIONS



Simply go to www.elitelivestockauctions.com.au using your desktop, laptop, iPad, iPhone or android device.



Click on the "Sign Up" page / link



Create a bidding profile using the bidder registration page. (You can either register as a livestock agent, company or private buyer)



Agree to the Elite Livestock Auctions Terms & Conditions and the Selling Agents Sale Terms & Conditions as printed in the official Sale Catalogue



Click "Register"



You will then be notified by email that an account has been created.



Once an account has been created you are all "Set to Bid"



Each Auction can then be viewed by clicking "Live Auction" logo on the Elite Livestock Auctions website.



Once you receive email notification that your account has been created please go to the sale you wish to bid at and click "Request to Bid"



The sale will then approve your application to bid and on the sale catalogue you will see "✓ Bid Request Approved"



On Sale day simply login, click "Enter Auction" on the catalogue page and you can start bidding. (There is no need for software download)



At the completion of the auction, invoicing will be carried out as per your registration details by the Selling Agents.

Having trouble registering and logging in?

1300 259 742



Elite Livestock Auctions ABN 19604 627 607
Level 19, 123 Eagle Street, Brisbane, QLD 4000

P : 1300 259 742 F : 07 3041 5053
www.elitelivestockauctions.com.au

Reference Sires - Blacks



BIMBADEEN MEMPHIS (P)

19 sons - (lots 1, 2, 4, 5, 6, 7, 10, 11, 12, 13, 19, 20, 21, 22, 27, 28, 32, 54, 60)

This super-stylish Bimbadeen bull was naturally bred from our two most influential bloodlines - out of our super-cow Bimbadeen D0135 (P) and by the great Oaklands Ambassador (P)(AI)(ET).

We used him in a short AI program (with great results) in 2019 and this will be his first drop of naturally mated Bimbadeen calves.

We love his calm nature, superior structure, athletic movement, virile outlook, and his sheer Brangus sire appeal. He offers consistently spectacular EBVs in a strong, moderate frame, with terrific fertility, beef and mothering traits - top 1% milk, scrotal size and export steer index, top 2% 400dw, top 4% carcass weight and retail beef yield, (PcPc, ED/ED)

(Photo: 3 years of age)



FOREST HILLS FAIR DINKUM 1168 (P)

7 sons - (lots 9, 15, 52, 59, 67, 68)

Purchased at the 2019 Forest Hills Sale, FAIR DINKUM brings plenty of Australian Brangus style to his progeny.

Great skin, terrific polled head (PcPc) and homozygous black coat (ED/ED) with lovely balance.

Sire of last year's second-top price bull SABRE S1 with some great sons.

(Photo: 22 months of age)



BIMBADEEN QANTAS Q137 (P)

5 sons (lots 8, 25, 127, 69, 70)

A bull we retained from our Q drop, with incredible temperament, frame and capacity.

Qantas is a $\frac{3}{8}$ - $\frac{5}{8}$ Brangus bull with outstanding beef production Breedplan results, in the top 2-4% for weights - 200/400/600 dw, carcass weight, yield and steer indexes. (PcPc, ED/ED).

(Photo: 34 months)



TRIPLE B NOBLE N405

5 sons (lots 16, 23, 31, 56, 58)

A soft, balanced bull with a strong, sirey Brangus head purchased in 2019, Noble was the sire of last year's top-priced bull, Bimbadeen Saxon S55.

His progeny exhibit his smoothness and good fertility measures.

(Photo: 23 months of age)



BIMBADEEN PILOT P33

4 sons (lots 34, 49, 50, 51)

Pilot (x Oaklands Ambassador) boasts phenomenal growth, has a great nature, imposing frame and excellent sheath design. He is our biggest sire and passes on his exceptional carcass EBVs (top 1% Retail Beef Yield, top 3% carcass weight, top 4% EMA & 600dw) and homozygous black coat and poll genes.

Retained from the 2017 calving drop, we love his skin and his structural integrity.

(Photo: 20 months of age)



BIMBADEEN LITCHFIELD L12 (P) (ET)

3 sons (lots 18, 61, 62)

An embryo calf by Singletary of Brinks 375R, born and raised at Bimbadeen. Litchfield is a terrifically easy-doing $\frac{3}{8}$ - $\frac{5}{8}$ bull with great libido and longevity (still working at age 9).

Breedplan EBVs show great EMA results (top 2%), yield (top 3%) and strong weights (top 10-20%). Deep bodied and great nature.

(Photo: 5 years in paddock condition)



BIMBADEEN NULLABOR N78

3 sons (lots 14, 26, 33)

Another home-grown sire retained from our 2016 drop, Nullabor has a super clean underline, double poll and black coat genes, and is known for his athletic structure and growth attributes. His pedigree offers both curvebender Greendale Y181 and Doonside Ira Hayes.

Nullabor's EBVs show top 3% 600dw, and top 5% carcass weight. Sons at 2021 Bimbadeen sale topped at \$16,000 (Rocky R144).

(Photo: 21 months.)

Reference Sires - Reds



REDLINE OAKLEY 8/315

4 sons (lots 36, 41, 46, 47)

OAKLEY is an easy-doing, good-natured sire with great skin and depth of frame.

He has grown out to be a huge bull and is by Doonside SHIRAZ. (Photo: 22 months of age)

TANNYFOIL MAVERICK (P)

10 sons (lots 35, 37, 38, 39, 40, 42, 43, 44, 45)

A bull with terrific frame, nature and style.

Lighter red colour, with son Bimbadeen Rango (P) taking out top-priced red bull in the 2021 sale (\$20,000). (PcPc, e/e)

Reference Sires - Dams



OAKLANDS AMBASSADOR (ET)

Sire of 9 dams and lot 64

Ambassador has undoubtedly put his stamp on the Bimbadeen stud herd over the past decade. Purchased in 2013 as a two-year-old, this bull worked across various stud paddocks for 7 years and has added consistency in frame and EMA to our herd. His structural soundness, fertility and style are his progeny's markers. (Photo: 21 months)



DOONSIDE IRA HAYES (AI) Sire of 5 dams

This higher content bull was the top-priced lot at the 2009 Doonside Brangus Sale and has bred his terrific athletic build, outstanding underline and gentle nature onto generations of his progeny. He is the paternal grandsire of Nullabor (p11) has also bred fantastic females. Interestingly, his EBVs for carcase weights are improving with each generation (top 4% carcase weight, 6% 400dw, 7% 600dw). (Photo: 30 months)



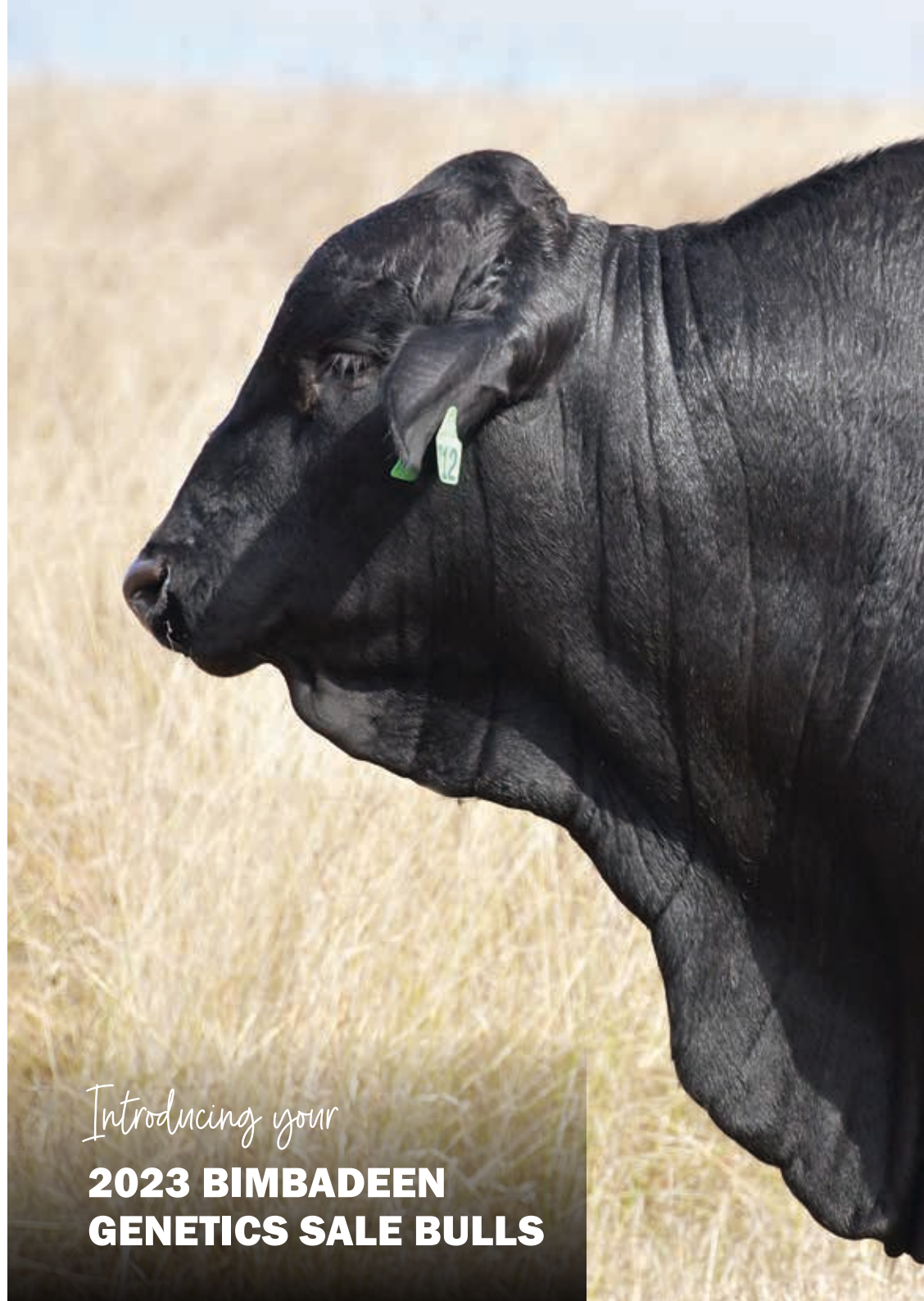
TELPARA HILLS MUNDINE 820J2 (ET)

Sire of 6 dams

Mundine was purchased in 2015 and has produced some excellent females for us, along with some very good bulls such as QANTAS Q137 (p10).

His pedigree includes a huge Brinks influence and his EBVs put him into the top 2% across weights, top 1% milk and retail beef yield.

(Photo: 20 months)



Introducing your

**2023 BIMBADEEN
GENETICS SALE BULLS**



Bimbadeen

TITUS T12 (P)

CSONKA OF BRINKS 30R4 (P)
OAKLANDS AMBASSADOR (P) (ET)
MISS BRINKS SUNDANCE 392L (P)

S. BIMBADEEN Q MEMPHIS (P)

DOONSIDE BB176-01 (P) (AI)
BIMBADEEN Q D0135 (P)
BIMBADEEN Q P033 (P)

CB HOMBRE 541T3 (P)
TELPARA HILLS JACKMAN 541H17 (P) (ET)
TELPARA HILLS MISS SINGLETARY 541E (P) (ET)

D. BIMBADEEN Q M121 (P)

DOONSIDE BB176-01 (P) (AI)
BIMBADEEN Q F84 (P)
BIMBADEEN Q R602 (P)

Phenomenal style and length with beautiful slick coat and superb underline.
Strong EBVs in top 10% for most growth measures. Both sides of pedigree tracing to Doonside BB176-01 (huge growth and carcase EBVs).
Terrific fertility results (89% morph).

Purchaser: \$
14

1

★ REGISTERED ★

IDENT. BIM21RT12
DOB. 31/8/2021
% BI. 42.8
GENS. 2

BW	1.7	49%
200D	20	63%
400D	37	60%
600D	35	64%
MCWT	26	52%
MILK	1	39%
SS	1.6	71%
CWT	21	52%
RBV	0.8	27%

DATE	WEIGHT
Wean	331kg
29/05/2023	642kg

SCROTAL 36cm
SEMEN ✓✓

H/POLL PcPc
COLOUR ED/E+
PV STATUS VS

Bimbadeen

TOP GUN T16 (P)

CSONKA OF BRINKS 30R4 (P)
OAKLANDS AMBASSADOR (P) (ET)
MISS BRINKS SUNDANCE 392L (P)

S. BIMBADEEN Q MEMPHIS (P)

DOONSIDE BB176-01 (P) (AI)
BIMBADEEN Q D0135 (P)
BIMBADEEN Q P033 (P)

WASHINGTON OF BRINKS 302S47 (P)
BIMBADEEN Q H1 (P) (ET)
MS BRINKS TRACKER 302R38 (P)

D. BIMBADEEN Q L47 (P)

GREENDALE Y181 (P)
BIMBADEEN Q F43 (P)
BIMBADEEN Q K286 (P)

Balance, softness, depth. Great pedigree to back his eye-catching phenotype - the cream of US and Australian Brangus. Very strong EBVs and fertility results. Consistent dam L47 has another bull calf at foot.

Purchaser: \$
15

2

★ REGISTERED ★

IDENT. BIM21RT16
DOB. 28/9/2021
% BI. 42.9
GENS. 2

BW	1.3	48%
200D	16	63%
400D	35	59%
600D	37	63%
MCWT	32	51%
MILK	2	41%
SS	3.3	71%
CWT	20	51%
RBV	0.9	25%

DATE	WEIGHT
Wean	288kg
29/05/2023	634kg

SCROTAL 40cm
SEMEN ✓✓

H/POLL PcPc
COLOUR ED/ED
PV STATUS VS



Bimbadeen

TRANSFORM T88^(P)

3

★ REGISTERED ★

IDENT. BIM21RT88
 DOB. 14/9/2021
 % BI. 43.1
 GENS. 4

NEW VISION OF SALACOA 209Y2 (P) (AI)
 HOLLYWOOD OF SALACOA 23A53 (P)
 MS SVF PATTON 23Y66 (P)

S. STOCKYARD P26 (P) (ET)

BELVIEW WARRIGAL (P)
 BELVIEW ABBA (P)
 BELVIEW SKYE (P)

SINGLETARY OF BRINKS 675R (P)
 BIMBADEEN Q LITCHFIELD L12 (P) (ET)
 TELPARA HILLS MISS SUNDANCE 541D6 (P) (ET)

D. BIMBADEEN Q P0154 (P)

BONOX 505 (P)
 BIMBADEEN Q K120 (P)
 BIMBADEEN Q R62 (P)

BW	-0.1	52%
200D	11	61%
400D	23	57%
600D	21	62%
MCWT	17	49%
MILK	-4	34%
SS	0.1	68%
CWT	13	48%
RBV		

DATE	WEIGHT
Wean	317kg
29/05/2023	644kg

SCROTAL 37cm
 SEMEN ✓✓

H/POLL PcPc
 COLOUR ED/ED
 PV STATUS VP

Super thick young bull with great skin and loads of sire potential

- leaning to stylish sire Stockyard P26 in phenotype. 4 gens outstanding breeding. Even better in the flesh.

Purchaser: \$ _____

Bimbadeen

TALISMAN T1^(P)

4

★ REGISTERED ★

IDENT. BIM21RT1
 DOB. 28/9/2021
 % BI. 42.9
 GENS. 2

CSONKA OF BRINKS 30R4 (P)
 OAKLANDS AMBASSADOR (P) (ET)
 MISS BRINKS SUNDANCE 392L (P)

S. BIMBADEEN Q MEMPHIS (P)

DOONSIDE BB176-01 (P) (AI)
 BIMBADEEN Q D0135 (P)
 BIMBADEEN Q P033 (P)

TRANSFORMER OF BRINKS (P) (ET)
 DOONSIDE IRA HAYES (P) (AI)
 DOONSIDE BB 3704-04 (P)

D. BIMBADEEN Q K60 (P)

GREENDALE Y0035 (P)
 BIMBADEEN Q R22 (P)
 BIMBADEEN Q K164 (P)

BW	2	49%
200D	22	63%
400D	40	60%
600D	42	63%
MCWT	40	51%
MILK	2	42%
SS	1.5	71%
CWT	22	51%
RBV	0.8	25%

DATE	WEIGHT
Wean	338kg
29/05/2023	654kg

SCROTAL 38cm
 SEMEN ✓✓

H/POLL PcPc
 COLOUR ED/E+
 PV STATUS VS

Deep, super-long and thick with a great underline and striking sirey outlook.

A stand-out phenotype since he was a calf. Top 7% for weight EBVs. Boasts great pedigree and fertility measures. (80/80)

Purchaser: \$ _____



Bimbadeen

TULSA T2 (P)

CSONKA OF BRINKS 30R4 (P)
OAKLANDS AMBASSADOR (P) (ET)
MISS BRINKS SUNDANCE 392L (P)

S. BIMBADEEN Q MEMPHIS (P)

DOONSIDE BB176-01 (P) (AI)
BIMBADEEN Q D0135 (P)
BIMBADEEN Q P033 (P)

CSONKA OF BRINKS 30R4 (P)
OAKLANDS AMBASSADOR (P) (ET)
MISS BRINKS SUNDANCE 392L (P)

D. BIMBADEEN Q M36 (P)

GREENDALE Y181 (P)
BIMBADEEN Q G0200 (P)
BIMBADEEN Q Q019 (P)

Super-thick and masculine all the way - Tulsa offers a true beef-producing phenotype with excellent fertility results. Pedigree traces back to curvebending sire Greendale Y181. (Top 3% milk and retail beef yield, top 9% 400dw and 600dw).

Purchaser: \$

18

5

★ REGISTERED ★

IDENT. BIM21RT2
DOB. 12/10/2021
% BI. 42.4
GENS. 2

BW	1.2	52%
200D	18	66%
400D	38	63%
600D	40	66%
MCWT	33	54%
MILK	2	43%
SS	1.3	73%
CWT	23	55%
RBV	1.3	29%

DATE	WEIGHT
Wean	256kg
29/05/2023	590kg

SCROTAL	33cm
SEMEN	✓✓

H/POLL	PcPc
COLOUR	ED/ED
PV STATUS	VS

Bimbadeen

TENNESSEE T5 (P)

CSONKA OF BRINKS 30R4 (P)
OAKLANDS AMBASSADOR (P) (ET)
MISS BRINKS SUNDANCE 392L (P)

S. BIMBADEEN Q MEMPHIS (P)

DOONSIDE BB176-01 (P) (AI)
BIMBADEEN Q D0135 (P)
BIMBADEEN Q P033 (P)

CSONKA OF BRINKS 30R4 (P)
OAKLANDS AMBASSADOR (P) (ET)
MISS BRINKS SUNDANCE 392L (P)

D. BIMBADEEN Q N66 (P)

DOONSIDE DR MOK (S)
BIMBADEEN Q F213 (P)
BIMBADEEN Q Q125 (P)

Yet another outstanding bull by Bimbadeen Memphis, Tennessee offers top 10% EBVs across most measures. Slick coat, masculine outlook and excellent fertility measures.

Purchaser: \$

19

6

★ REGISTERED ★

IDENT. BIM21RT5
DOB. 26/10/2021
% BI. 43.6
GENS. 2

BW	2.1	51%
200D	22	65%
400D	40	62%
600D	42	65%
MCWT	36	54%
MILK	2	42%
SS	3.3	73%
CWT	23	54%
RBV	1.2	29%

DATE	WEIGHT
Wean	308kg
29/05/2023	675kg

SCROTAL	41cm
SEMEN	✓✓

H/POLL	PcPc
COLOUR	ED/ED
PV STATUS	VS



Bimbadeen

TAURUS T13 (P)

CSONKA OF BRINKS 30R4 (P)
OAKLANDS AMBASSADOR (P) (ET)
MISS BRINKS SUNDANCE 392L (P)

S. BIMBADEEN Q MEMPHIS (P)

DOONSIDE BB176-01 (P) (AI)
BIMBADEEN Q D0135 (P)
BIMBADEEN Q P033 (P)

CSONKA OF BRINKS 30R4 (P)
OAKLANDS AMBASSADOR (P) (ET)
MISS BRINKS SUNDANCE 392L (P)

D. BIMBADEEN Q M9 (P)

DOONSIDE DR MOK (S)
BIMBADEEN Q G159 (P)
BIMBADEEN Q Q007 (P)

Superb skin, style and substance with this young bull - featuring exceptional Brangus genetics. Granddam G159 a super-producer of seedstock (Pilot, Remington). Very strong growth, carcase and fertility EBVs.

Purchaser: \$
20

7

★ REGISTERED ★

IDENT. BIM21RT13
DOB. 14/9/2021
% BI. 42.5
GENS. 2

BW	1.1	52%
200D	16	66%
400D	35	63%
600D	34	66%
MCWT	26	54%
MILK	1	44%
SS	3.1	73%
CWT	20	55%
RBV	1.1	30%

DATE	WEIGHT
Wean	302kg
29/05/2023	646kg

SCROTAL 41cm
SEMEN ✓✓

H/POLL PcPc
COLOUR ED/ED
PV STATUS VS

Bimbadeen

THOR T196 (P)

CSONKA OF BRINKS 30R4 (P)
TELPARA HILLS MUNDINE 820J2 (P) (AI)
TELPARA HILLS MISS L11 820D4 (P)

S. BIMBADEEN Q QANTAS Q137 (P)

SUHN'S NEXT STEP 331R7 (P)
BIMBADEEN Q M138 (P) (ET)
TELPARA HILLS MISS CSONKA 541H (P) (ET)

CSONKA OF BRINKS 30R4 (P)
OAKLANDS AMBASSADOR (P) (ET)
MISS BRINKS SUNDANCE 392L (P)

D. BIMBADEEN Q Q0100 (P)

DOONSIDE IRA HAYES (P) (AI)
BIMBADEEN Q K77 (P)
BIMBADEEN Q M074 (P)

Terrific Brangus phenotype, an exciting pedigree (by Qantas with dam's bloodlines including EBV powerhouse Doonside Ira Hayes) with exceptional fertility results (80/94).

Purchaser: \$
21

8

★ REGISTERED ★

IDENT. BIM21RT196
DOB. 7/9/2021
% BI. 41.2
GENS. 4

BW	1	48%
200D	17	59%
400D	33	58%
600D	36	63%
MCWT	32	52%
MILK	-2	38%
SS	1	69%
CWT	20	52%
RBV	1.1	28%

DATE	WEIGHT
Wean	290kg
29/05/2023	608kg

SCROTAL 35cm
SEMEN ✓✓

H/POLL PcPc
COLOUR ED/ED
PV STATUS VP



Bimbadeen

TEMPLE T81 (P)

LUNAR FRED (P)
 BINDAREE CRAFTSMAN C432 (P)
 BINDAREE 0497 (P)

S. FOREST HILLS FAIR DINKUM 1168 (P)

KAJARABIE 991 (S)
 FOREST HILLS DARLA 723 (P)
 KAJARABIE E095 (P)

CSONKA OF BRINKS 30R4 (P)
 OAKLANDS AMBASSADOR (P) (ET)
 MISS BRINKS SUNDANCE 392L (P)

D. BIMBADEEN Q P0230 (P)

DOONSIDE BB176-01 (P) (AI)
 BIMBADEEN Q D0135 (P)
 BIMBADEEN Q P033 (P)

This bull covers all the bases - homozygous poll and black coat, fantastic semen results, awesome Breedplan EBVs (top weaning weight, and in top 3 weights at each weigh-in). TEMPLE has a powerful build, very sound structure and great sire appeal. His dam is a full sister to Bimbadeen MEMPHIS.

Purchaser: \$

22

9

★ REGISTERED ★

IDENT. BIM21RT81
 DOB. 31/8/2021
 % BI. 45.9
 GENS. 2

BW	2.3	49%
200D	26	63%
400D	42	60%
600D	42	63%
MCWT	35	51%
MILK	5	33%
SS	0.4	71%
CWT	23	51%
RBV		

DATE	WEIGHT
Wean	401kg
29/05/2023	710kg

SCROTAL	37cm
SEMEN	✓✓

H/POLL	PcPc
COLOUR	ED/ED
PV STATUS	VS

Bimbadeen

TOKYO T18 (P)

CSONKA OF BRINKS 30R4 (P)
 OAKLANDS AMBASSADOR (P) (ET)
 MISS BRINKS SUNDANCE 392L (P)

S. BIMBADEEN Q MEMPHIS (P)

DOONSIDE BB176-01 (P) (AI)
 BIMBADEEN Q D0135 (P)
 BIMBADEEN Q P033 (P)

BONOX 368 (P)
 BONOX 505 (P)
 BONOX B211 (P)

D. BIMBADEEN Q M76 (P)

DOONSIDE IRA HAYES (P) (AI)
 BIMBADEEN Q J136 (P)
 BIMBADEEN Q R608 (P)

Another great Memphis son, with great structure, power and sheath pattern. Offers excellent Australian bloodlines (Doonside, Bonox and Bimbadeen) fused with great Brinks genetics. Very good fertility indicators.

Purchaser: \$

23

10

★ REGISTERED ★

IDENT. BIM21RT18
 DOB. 31/8/2021
 % BI. 44.6
 GENS. 2

BW	0.6	48%
200D	13	63%
400D	29	59%
600D	25	63%
MCWT	19	51%
MILK	0	41%
SS	2.6	71%
CWT	15	51%
RBV	0.3	25%

DATE	WEIGHT
Wean	320kg
29/05/2023	644kg

SCROTAL	39cm
SEMEN	✓✓

H/POLL	PcPc
COLOUR	ED/ED
PV STATUS	VS



Bimbadeen

TRINIDAD T382 (P)

CSONKA OF BRINKS 30R4 (P)
OAKLANDS AMBASSADOR (P) (ET)
MISS BRINKS SUNDANCE 392L (P)

S. BIMBADEEN Q MEMPHIS (P)

DOONSIDE BB176-01 (P) (AI)
BIMBADEEN Q D0135 (P)
BIMBADEEN Q P033 (P)

COOLABAH MATT (S)
COUTI-OUTI JOCK (P)
COUTI-OUTI FENULA (P)

D. BIMBADEEN Q R379 (P)

BIMBADEEN Q NW 875 (P)
BIMBADEEN Q K041 (P)
BIMBADEEN Q D04 (P)

Lots to admire from every angle, with great bone, excellent structure and that strong, kind Brangus head. Trinidad is super-solid with outstanding weights (top 7-9%) and fertility EBVs (top 1% milk and scrotal) and top 5% steer indexes.

Purchaser: \$ _____
24

11

★ REGISTERED ★

IDENT. BIM21RT382
DOB. 20/10/2021
% BI. 47.9
GENS. 2

BW	1.9	48%
200D	20	64%
400D	38	59%
600D	42	63%
MCWT	38	50%
MILK	3	40%
SS	3.2	70%
CWT	21	51%
RBV		

DATE	WEIGHT
Wean	263kg
29/05/2023	638kg

SCROTAL	42cm
SEMEN	✓✓

H/POLL	PcPc
COLOUR	ED/ED
PV STATUS	VS

Bimbadeen

TAMPA T11 (P)

CSONKA OF BRINKS 30R4 (P)
OAKLANDS AMBASSADOR (P) (ET)
MISS BRINKS SUNDANCE 392L (P)

S. BIMBADEEN Q MEMPHIS (P)

DOONSIDE BB176-01 (P) (AI)
BIMBADEEN Q D0135 (P)
BIMBADEEN Q P033 (P)

RUSHTON CSONKA'S FORTUNE (P) (ET)
BIMBADEEN Q KOSCIUSZKO (P)
BIMBADEEN Q G173 (P)

D. BIMBADEEN Q P0142 (P)

BIMBADEEN Q GRAPHITE (P)
BIMBADEEN Q K44 (P)
BIMBADEEN Q E29 (P)

Very masculine outlook in another strong and stylish young Memphis-sired bull. Tampa also offers some great Greendale genetics. Exceptional morphology (95%)

Purchaser: \$ _____
25

12

★ REGISTERED ★

IDENT. BIM21RT11
DOB. 9/11/2021
% BI. 44.9
GENS. 2

BW	0.5	41%
200D	13	53%
400D	33	49%
600D	30	49%
MCWT	22	39%
MILK	1	36%
SS	2.9	50%
CWT	18	41%
RBV		

DATE	WEIGHT
Wean	265kg
29/05/2023	568kg

SCROTAL	35cm
SEMEN	✓✓

H/POLL	HPc
COLOUR	ED/e
PV STATUS	VS



Bimbadeen

TRUMAN T3 (P)

CSONKA OF BRINKS 30R4 (P)
OAKLANDS AMBASSADOR (P) (ET)
MISS BRINKS SUNDANCE 392L (P)

S. BIMBADEEN Q MEMPHIS (P)

DOONSIDE BB176-01 (P) (AI)
BIMBADEEN Q D0135 (P)
BIMBADEEN Q P033 (P)

CSONKA OF BRINKS 30R4 (P)
TELPARA HILLS MUNDINE 820J2 (P) (AI)
TELPARA HILLS MISS L11 820D4 (P)

D. BIMBADEEN Q N117 (P)

GREENDALE TRACTION (P)
BIMBADEEN Q E0137 (P)
BIMBADEEN Q L196 (P)

Truman is a bit special - a fantastic natured young bull with terrific carcass and underline. His EBVs rate him within the top 10% across weights, 5% for retail beef yield and 1% scrotal.

Purchaser: \$

26

13

★ REGISTERED ★

IDENT. BIM21RT3
DOB. 14/9/2021
% BI. 43.7
GENS. 2

BW	1.6	49%
200D	19	64%
400D	38	60%
600D	41	64%
MCWT	35	52%
MILK	2	42%
SS	3.3	72%
CWT	22	52%
RBV	1.1	28%

DATE	WEIGHT
Wean	326kg
29/05/2023	678kg

SCROTAL	41cm
SEMEN	✓✓

H/POLL	PcPc
COLOUR	ED/ED
PV STATUS	VS

Bimbadeen

THUNDER T133 (P)

DOONSIDE IRA HAYES (P) (AI)
BIMBADEEN Q KAKADU (P)
BIMBADEEN Q Q105 (P)

S. BIMBADEEN Q NULLABOR N78 (P)

GREENDALE Y181 (P)
BIMBADEEN Q G0200 (P)
BIMBADEEN Q Q019 (P)

BARWONGA 926 (P)
BONOX 302 (P)
BRANGUS COW (P)

D. BIMBADEEN Q J208 (P)

DOONSIDE BB176-01 (P) (AI)
BIMBADEEN Q Q021 (P)
BIMBADEEN Q K003 (P)

A Nullabor son with superb slick coat, a kind, masculine head and very correct structure. Homozygous poll, black coat, excellent fertility measures and ranking in top 10% for 600dw EBV. THUNDER has been consistently in the top 5 weights 400/600 in raw data for this cohort.

Purchaser: \$

27

14

★ REGISTERED ★

IDENT. BIM21RT133
DOB. 13/11/2021
% BI. 47.3
GENS. 1

BW	0.8	45%
200D	14	58%
400D	31	59%
600D	39	63%
MCWT	47	50%
MILK	-3	35%
SS	-0.2	69%
CWT	19	51%
RBV		

DATE	WEIGHT
Wean	293kg
29/05/2023	680kg

SCROTAL	35cm
SEMEN	✓✓

H/POLL	PcPc
COLOUR	ED/ED
PV STATUS	VS



Bimbadeen

TITAN T9 (P)

LUNAR FRED (P)
 BINDAREE CRAFTSMAN C432 (P)
 BINDAREE 0497 (P)

S. FOREST HILLS FAIR DINKUM 1168 (P)

KAJARABIE 991 (S)
 FOREST HILLS DARLA 723 (P)
 KAJARABIE E095 (P)

CB HOMBRE 541T3 (P)

TELPARA HILLS JACKMAN 541H17 (P) (ET)
 TELPARA HILLS MISS SINGLETARY 541E (P) (ET)

D. BIMBADEEN Q P2 (P)

BONOX 474 (P)
 BIMBADEEN Q H114 (P)
 BIMBADEEN Q E0020 (P)

Our gentle giant - unbelievably kind nature, and terrific in frame, this young bull lives up to his name. Top 6% for 600dw EBV. Titan is your bull if you seek to add dimension and great temperament into your herd. Raw data has him in top 3 weights at every weigh-in for this calving drop.

Purchaser: \$
 28

15

★ REGISTERED ★

IDENT. BIM21RT9
 DOB. 31/8/2021
 % BI. 43.4
 GENS. 3

BW	1.6	48%
200D	18	63%
400D	35	59%
600D	43	63%
MCWT	46	50%
MILK	0	31%
SS	0.9	71%
CWT	21	50%
RBV		

DATE	WEIGHT
Wean	346kg
29/05/2023	704kg

SCROTAL 39cm
 SEMEN ✓✓

H/POLL PcPc
 COLOUR ED/ED
 PV STATUS VP

Bimbadeen

TAR T49 (P)

SUHN'S NEXT STEP 331R7 (P)
 TRIPLE B JASPER J531 (P) (ET)
 TRIPLE B MADDISON D176 (P)

S. TRIPLE B NOBLE N405 (P)

YABBA-DO D43 (P) (ET)
 TRIPLE B CORDELIA K23 (P)
 TRIPLE B CORDELIA E275 (P)

TRANSFORMER OF BRINKS (P) (ET)

DOONSIDE IRA HAYES (P) (AI)
 DOONSIDE BB 3704-04 (P)

D. BIMBADEEN Q GIGI (S)

BRANGUS BULL (P)
 BIMBADEEN Q K286 (P)
 BRANGUS COW (P)

Another great natured young bull with excellent carcass traits - needs to be seen to be appreciated. By the sire of last year's top-priced bull (Triple B Noble N405). Top morphology of the draft (96%).

Purchaser: \$
 29

16

★ REGISTERED ★

IDENT. BIM21RT49
 DOB. 31/8/2021
 % BI. 44.7
 GENS. 1

BW	0.6	48%
200D	15	63%
400D	29	60%
600D	30	63%
MCWT	27	52%
MILK	-3	43%
SS	2	71%
CWT	15	52%
RBV	0	29%

DATE	WEIGHT
Wean	316kg
29/05/2023	626kg

SCROTAL 42cm
 SEMEN ✓✓

H/POLL HPC
 COLOUR ED/ED
 PV STATUS VS



Bimbadeen Q

TOTAL T48 (P)

LUNAR FRED (P)
 BINDAREE CRAFTSMAN C432 (P)
 BINDAREE 0497 (P)

S. FOREST HILLS FAIR DINKUM 1168 (P)

KAJARABIE 991 (S)
 FOREST HILLS DARLA 723 (P)
 KAJARABIE E095 (P)

CSONKA OF BRINKS 30R4 (P)
 OAKLANDS AMBASSADOR (P) (ET)
 MISS BRINKS SUNDANCE 392L (P)

D. BIMBADEEN Q P63 (P)

BRANGUS BULL B75A25 (P)
 BIMBADEEN Q J198 (P)
 BRANGUS COW (P)

A very tidy young bull with homozygous poll and black coat DNA results.
 Strong morphology results with EBVs indicating suitability for heifer joining.

Purchaser: \$ _____
 30

17

★ REGISTERED ★

IDENT. BIM21RT48
 DOB. 14/9/2021
 % BI. 49.1
 GENS. 1

BW	-0.5	46%
200D	10	61%
400D	22	58%
600D	19	62%
MCWT	16	49%
MILK	0	30%
SS	-0.7	70%
CWT	14	49%
RBV		

DATE	WEIGHT
Wean	276kg
29/05/2023	598kg

SCROTAL	36cm
SEMEN	✓✓

H/POLL	PcPc
COLOUR	ED/ED
PV STATUS	VP



Bimbadeen

TANSEY T104 (P)

LEAD GUN OF BRINKS 222K14 (P)
 SINGLETARY OF BRINKS 675R (P)
 MS BRINKS UPPERCUT 209N11 (P)

S. BIMBADEEN Q LITCHFIELD L12 (P) (ET)

SUNDANCE OF BRINKS 392G9 (P) (ET)
 TELPARA HILLS MISS SUNDANCE 541D6 (P) (ET)
 MISS BRINKS KO 541L41 (P) (ET)

BONOX 368 (P)
 BONOX 505 (P)
 BONOX B211 (P)

D. BIMBADEEN Q L110 (P)

GREENDALE TRACTION (P)
 BIMBADEEN Q E0137 (P)
 BIMBADEEN Q L196 (P)

Super-correct, very tidy and fertile - a great young bull to sort out underline and structural issues. By Bimbadeen Litchfield L12 (all-Brinks) who was still working at 9 years of age.

Purchaser: \$ _____
 31

18

★ REGISTERED ★

IDENT. BIM21RT104
 DOB. 15/9/2021
 % BI. 42.0
 GENS. 2

BW	-0.8	49%
200D	3	63%
400D	13	60%
600D	12	64%
MCWT	11	52%
MILK	-1	44%
SS	1.7	72%
CWT	8	52%
RBV	0.6	28%

DATE	WEIGHT
Wean	286kg
29/05/2023	624kg

SCROTAL	34cm
SEMEN	✓✓

H/POLL	PcPc
COLOUR	ED/ED
PV STATUS	VS





Bimbadeen

TOTO T14 (P)

CSONKA OF BRINKS 30R4 (P)
OAKLANDS AMBASSADOR (P) (ET)
MISS BRINKS SUNDANCE 392L (P)

S. BIMBADEEN Q MEMPHIS (P)

DOONSIDE BB176-01 (P) (AI)
BIMBADEEN Q D0135 (P)
BIMBADEEN Q P033 (P)

MUAN ANDY (P) (AI)
DOONSIDE 565-06 (P)
DOONSIDE RB 3146-03 (P) (AI)

D. BIMBADEEN Q L129 (P)

BRANGUS BULL B62A38 (P)
BIMBADEEN Q N0315 (P)
BRANGUS COW (P)

Another Memphis son with terrific fertility indicators and measures, great slick skin and strong sirey phenotype. Morph of 92%.

Purchaser: \$
32

19

★ REGISTERED ★

IDENT. BIM21RT14
DOB. 28/9/2021
% BI. 52.8
GENS. 1

BW	-0.2	46%
200D	9	62%
400D	20	58%
600D	15	62%
MCWT	4	49%
MILK	1	39%
SS	2.4	70%
CWT	11	49%
RBV		

DATE	WEIGHT
Wean	287kg
29/05/2023	580kg

SCROTAL 42cm
SEMEN ✓✓

H/POLL PcPc
COLOUR ED/ED
PV STATUS VS

Bimbadeen

TIVOLI T17 (P)

CSONKA OF BRINKS 30R4 (P)
OAKLANDS AMBASSADOR (P) (ET)
MISS BRINKS SUNDANCE 392L (P)

S. BIMBADEEN Q MEMPHIS (P)

DOONSIDE BB176-01 (P) (AI)
BIMBADEEN Q D0135 (P)
BIMBADEEN Q P033 (P)

BONOX 368 (P)
BONOX 505 (P)
BONOX B211 (P)

D. BIMBADEEN Q L116 (P)

GREENDALE Y0035 (P)
BIMBADEEN Q E0020 (P)
BIMBADEEN Q G170 (P)

A very sirey and well-put together young bull by Memphis out of the super-consistent dam L116 (7 registered calves in 7 years). Strong EBVs (top 10% milk).

Purchaser: \$
33

20

★ REGISTERED ★

IDENT. BIM21RT17
DOB. 28/9/2021
% BI. 42.8
GENS. 2

BW	0.9	48%
200D	16	63%
400D	30	59%
600D	30	63%
MCWT	28	50%
MILK	1	42%
SS	1.6	70%
CWT	17	51%
RBV		

DATE	WEIGHT
Wean	308kg
29/05/2023	642kg

SCROTAL 40cm
SEMEN ✓✓

H/POLL PcPc
COLOUR ED/ED
PV STATUS VS



Bimbadeen

TAYLOR T21 (P)

CSONKA OF BRINKS 30R4 (P)
OAKLANDS AMBASSADOR (P) (ET)
MISS BRINKS SUNDANCE 392L (P)

S. BIMBADEEN Q MEMPHIS (P)

DOONSIDE BB176-01 (P) (AI)
BIMBADEEN Q D0135 (P)
BIMBADEEN Q P033 (P)

TRANSFORMER OF BRINKS (P) (ET)
DOONSIDE IRA HAYES (P) (AI)
DOONSIDE BB 3704-04 (P)

D. BIMBADEEN Q L119 (P)

BIMBADEEN Q H139 (P)
BIMBADEEN Q L207 (P)
BIMBADEEN Q G202 (P)

Slick coated with homozygous poll and black coat DNA results, Taylor rates in top 1% milk EBV with strong 200 and 400dw and fertility indicators.

Purchaser: \$
34

21

★ REGISTERED ★

IDENT. BIM21RT21
DOB. 28/9/2021
% BI. 47.1
GENS. 2

BW	1.1	49%
200D	18	64%
400D	33	60%
600D	30	63%
MCWT	22	51%
MILK	3	43%
SS	1.4	70%
CWT	18	52%
RBV		

DATE	WEIGHT
Wean	314kg
29/05/2023	590kg

SCROTAL SEMEN	38cm ✓✓
---------------	---------

H/POLL	PcPc
COLOUR	ED/ED
PV STATUS	VS



Bimbadeen

TETON T22 (P)

CSONKA OF BRINKS 30R4 (P)
OAKLANDS AMBASSADOR (P) (ET)
MISS BRINKS SUNDANCE 392L (P)

S. BIMBADEEN Q MEMPHIS (P)

DOONSIDE BB176-01 (P) (AI)
BIMBADEEN Q D0135 (P)
BIMBADEEN Q P033 (P)

CB HOMBRE 541T3 (P)
TELPARA HILLS JACKMAN 541H17 (P) (ET)
TELPARA HILLS MISS SINGLETARY 541E (P) (ET)

D. BIMBADEEN Q NIGELLA (P)

GREENDALE URANIA (P)
BIMBADEEN Q R608 (P)
BIMBADEEN Q K119 (P)

Another slick, strong, tidy Memphis son, Teton is out of show cow, Bimbadeen Nigella (5 calves/5 years). He offers top 4% milk and top 8% 200dw.

Purchaser: \$
35

22

★ REGISTERED ★

IDENT. BIM21RT22
DOB. 12/10/2021
% BI. 44.8
GENS. 2

BW	1.8	50%
200D	21	64%
400D	36	60%
600D	36	64%
MCWT	28	52%
MILK	2	40%
SS	1.4	71%
CWT	20	52%
RBV	0.7	27%

DATE	WEIGHT
Wean	317kg
29/05/2023	640kg

SCROTAL SEMEN	39cm ✓✓
---------------	---------

H/POLL	PcPc
COLOUR	ED/E+
PV STATUS	VS





Bimbadeen

TERRAIN T53 (P)

SUHN'S NEXT STEP 331R7 (P)
 TRIPLE B JASPER J531 (P) (ET)
 TRIPLE B MADDISON D176 (P)

S. TRIPLE B NOBLE N405 (P)

YABBA-DO D43 (P) (ET)
 TRIPLE B CORDELIA K23 (P)
 TRIPLE B CORDELIA E275 (P)

BONOX 368 (P)
 BONOX 505 (P)
 BONOX B211 (P)

D. BIMBADEEN Q L91 (P)

DOONSIDE DR MOK (S)
 BIMBADEEN Q G159 (P)
 BIMBADEEN Q Q007 (P)

Terrain displays the soft thickness of his sire Triple B Noble N405 and reflects the fertility of dam L91 who has been a great Bimbadeen producer (7 registered progeny/7 years). 91% morph.

Purchaser: \$
 36

23

★ REGISTERED ★

IDENT. BIM21RT53
 DOB. 31/8/2021
 % BI. 43.7
 GENS. 3

BW	-1.7	49%
200D	2	63%
400D	9	61%
600D	3	64%
MCWT	-2	53%
MILK	-4	41%
SS	1.1	72%
CWT	3	53%
RBV	-0.7	32%

DATE	WEIGHT
Wean	299kg
29/05/2023	570kg

SCROTAL 39cm
 SEMEN ✓✓

H/POLL PcPc
 COLOUR ED/ED
 PV STATUS VS

Bimbadeen

THERMAL T57 (P)

BONOX 326 (P)
 BONOX 493 (P)
 BONOX B155 (P)

S. TRIPLE B PINNACLE P313 (P) (AI)

JETT 99H1 (P)
 TRIPLE B LUCY L179 (P)
 TRIPLE B LUCY H489 (P)

RUSHTON CSONKA'S FORTUNE (P) (ET)
 BIMBADEEN Q GRAPHITE (P)
 BIMBADEEN Q D0314 (P)

D. BIMBADEEN Q Q77 (P)

BRANGUS BULL (P)
 BIMBADEEN Q Q0103 (P)
 BIMBADEEN Q K147 (P)

You don't get much more correct and stylish than Thermal - superbly put-together with great underline, thickness and slick skin type plus homozygous poll and black coat DNA results.

Purchaser: \$
 37

24

★ REGISTERED ★

IDENT. BIM21RT57
 DOB. 28/9/2021
 % BI. 48.1
 GENS. 1

BW	0.3	46%
200D	11	61%
400D	27	57%
600D	27	62%
MCWT	26	51%
MILK	-1	37%
SS	1.4	70%
CWT	16	49%
RBV	0.2	29%

DATE	WEIGHT
Wean	309kg
29/05/2023	668kg

SCROTAL 42cm
 SEMEN ✓ Q

H/POLL PcPc
 COLOUR ED/ED
 PV STATUS VP



Bimbadeen

TRIUMPH T93 (P)

CSONKA OF BRINKS 30R4 (P)
 TELPARA HILLS MUNDINE 820J2 (P) (AI)
 TELPARA HILLS MISS L11 820D4 (P)

S. BIMBADEEN Q QANTAS Q137 (P)

SUHN'S NEXT STEP 331R7 (P)
 BIMBADEEN Q M138 (P) (ET)
 TELPARA HILLS MISS CSONKA 541H (P) (ET)

COUTI-OUTI AGRO (P)
 GREENDALE QUICK MOVE (P)
 GREENDALE JO-JO (P)

D. BIMBADEEN Q P0109 (P)

BIMBADEEN Q H1 (P) (ET)
 BIMBADEEN Q L53 (P)
 BIMBADEEN Q E73 (P)

Plenty of wow factor across the board - great bone and terrific frame from sire Bimbadeen Qantas Q137. Great fertility results and EBVs rating him top 2% 600dw and top 3% carcass weight. Out of dam of last year's top-price bull, Bimbadeen SAXON S55.

Purchaser: \$
 38

25

★ REGISTERED ★

IDENT. BIM21RT93
 DOB. 28/9/2021
 % BI. 42.0
 GENS. 4

BW	2.1	48%
200D	22	61%
400D	42	57%
600D	52	61%
MCWT	55	49%
MILK	1	39%
SS	1.8	46%
CWT	25	49%
RBV		

DATE	WEIGHT
Wean	311kg
29/05/2023	646kg

SCROTAL	42cm
SEMEN	✓✓

H/POLL	PcPc
COLOUR	ED/ED
PV STATUS	VP



Bimbadeen

TURIN T132 (P)

DOONSIDE IRA HAYES (P) (AI)
 BIMBADEEN Q KAKADU (P)
 BIMBADEEN Q Q105 (P)

S. BIMBADEEN Q NULLABOR N78 (P)

GREENDALE Y181 (P)
 BIMBADEEN Q G0200 (P)
 BIMBADEEN Q Q019 (P)

CSONKA OF BRINKS 30R4 (P)
 TELPARA HILLS MUNDINE 820J2 (P) (AI)
 TELPARA HILLS MISS L11 820D4 (P)

D. BIMBADEEN Q N85 (P)

DOONSIDE DR MOK (S)
 BIMBADEEN Q H201 (P)
 BIMBADEEN Q R415 (P)

The second Nullabor son on offer this sale, Turin is tidy and mobile with strong EBVs rating him in top 10-15% for 600dw, carcass weight and retail beef yield.

Purchaser: \$
 39

26

★ REGISTERED ★

IDENT. BIM21RT132
 DOB. 10/11/2021
 % BI. 45.1
 GENS. 4

BW	0.7	48%
200D	14	64%
400D	31	61%
600D	39	64%
MCWT	43	51%
MILK	-1	37%
SS	0.2	70%
CWT	20	52%
RBV	0.8	27%

DATE	WEIGHT
Wean	266kg
29/05/2023	594kg

SCROTAL	35cm
SEMEN	✓✓

H/POLL	PcPc
COLOUR	ED/ED
PV STATUS	VS





Bimbadeen

THUMPER T6 (P)(TW)

CSONKA OF BRINKS 30R4 (P)
OAKLANDS AMBASSADOR (P) (ET)
MISS BRINKS SUNDANCE 392L (P)

S. BIMBADEEN Q MEMPHIS (P)

DOONSIDE BB176-01 (P) (AI)
BIMBADEEN Q D0135 (P)
BIMBADEEN Q P033 (P)

DOONSIDE WITCHDOCTOR (P) (AI)
DOONSIDE DR MOK (S)
GREENDALE PRECISE (P)

D. BIMBADEEN Q G159 (P)

XS JOHNNY LEE 369H (S)
BIMBADEEN Q Q007 (P)
GREENDALE Y190 (P)

The perfect heifer bull with loads of style and breeding.

Thumper is a twin out of the great Bimbadeen dam G159 (13 calves/12 years) who also produced Remington and Pilot. (93% Morph)

Purchaser: \$
40

27

★ REGISTERED ★

IDENT. BIM21RT6
DOB. 9/11/2021
% BI. 44.6
GENS. 2

BW	0.2	51%
200D	12	65%
400D	27	62%
600D	24	66%
MCWT	19	54%
MILK	1	45%
SS	1.2	72%
CWT	15	54%
RBV	0.5	28%

DATE	WEIGHT
Wean	239kg
29/05/2023	490kg

SCROTAL SEMEN 35cm ✓✓

H/POLL PcPc
COLOUR ED/ED
PV STATUS VS

Bimbadeen

TOLEDO T10 (P)

CSONKA OF BRINKS 30R4 (P)
OAKLANDS AMBASSADOR (P) (ET)
MISS BRINKS SUNDANCE 392L (P)

S. BIMBADEEN Q MEMPHIS (P)

DOONSIDE BB176-01 (P) (AI)
BIMBADEEN Q D0135 (P)
BIMBADEEN Q P033 (P)

RUSHTON CSONKA'S FORTUNE (P) (ET)
BIMBADEEN Q KOSCIUSZKO (P)
BIMBADEEN Q G173 (P)

D. BIMBADEEN Q N145 (P)

DOONSIDE DR MOK (S)
BIMBADEEN Q J173 (P)
BIMBADEEN Q P063 (P)

Thicket and fertile - ready to work! This compact, tidy, masculine young bull offers homozygous poll and black coat DNA and very strong fertility results. EBVs indicate suitability for heifer joining.

Purchaser: \$
41

28

★ REGISTERED ★

IDENT. BIM21RT10
DOB. 26/10/2021
% BI. 45.1
GENS. 2

BW	0.2	48%
200D	10	63%
400D	27	59%
600D	25	63%
MCWT	20	50%
MILK	-1	40%
SS	3	71%
CWT	15	51%
RBV		

DATE	WEIGHT
Wean	269kg
29/05/2023	594kg

SCROTAL SEMEN 42cm ✓✓

H/POLL PcPc
COLOUR ED/ED
PV STATUS VS

Bimbadeen

TREK T318 (P)

MC JETHRO 00S3 (P)
MC X FACTOR 889X34 (P)
MC MS 5175 BANDO 889P12 (P)

S. BIMBADEEN Q NASHVILLE (P) (AI)

BIMBADEEN Q GRAPHITE (P)
BIMBADEEN Q K10 (P)
BIMBADEEN Q G84 (P)

D. BRANGUS COW (P)

The only Bimbadeen Nashville son in this draft, with the strong, consistent EBVs for which his sire is noted. Top 5% scrotal, top 9% 400dw and carcase weight. Long with good skin. (89% morph)

Purchaser: \$

29		
★ ENROLLED ★		
IDENT.	BIM21ET318	
DOB.	15/10/2021	
% BI.	46.9	
GENS.		
BW	1	41%
200D	17	52%
400D	37	54%
600D	35	59%
MCWT	35	46%
MILK		
SS	2.1	67%
CWT	21	47%
RBV		
DATE	WEIGHT	
Wean	283kg	
29/05/2023	604kg	
SCROTAL SEMEN	41cm	✓✓
H/POLL	PcPc	
COLOUR	ED/e	
PV STATUS	VS	

Bimbadeen

TIDE T58 (P)

SUHN'S NEXT STEP 331R7 (P)
TRIPLE B JASPER J531 (P) (ET)
TRIPLE B MADDISON D176 (P)

S. TRIPLE B NOBLE N405 (P)

YABBA-DO D43 (P) (ET)
TRIPLE B CORDELIA K23 (P)
TRIPLE B CORDELIA E275 (P)

D. BIMBADEEN Q N125 (P)

GREENDALE TRACTION (P)
BIMBADEEN Q E68 (P)
BIMBADEEN Q P111 (P)

Very tidy young bull whose EBVs indicate probably suitability for heifer joining. Homozygous poll and black coat DNA results.

Purchaser: \$

31		
★ REGISTERED ★		
IDENT.	BIM21RT58	
DOB.	14/9/2021	
% BI.	43.3	
GENS.	4	
BW	-1	49%
200D	7	63%
400D	17	60%
600D	11	64%
MCWT	1	53%
MILK	0	39%
SS	2.6	72%
CWT	6	52%
RBV	0	32%
DATE	WEIGHT	
Wean	289kg	
29/05/2023	540kg	
SCROTAL SEMEN	42cm	✓✓
H/POLL	PcPc	
COLOUR	ED/ED	
PV STATUS	VS	

Bimbadeen

TZAR T127 (P)

CSONKA OF BRINKS 30R4 (P)
TELPARA HILLS MUNDINE 820J2 (P) (AI)
TELPARA HILLS MISS L11 820D4 (P)

S. BIMBADEEN Q QANTAS Q137 (P)

SUHN'S NEXT STEP 331R7 (P)
BIMBADEEN Q M138 (P) (ET)
TELPARA HILLS MISS CSONKA 541H (P) (ET)

D. BIMBADEEN Q P96 (P)

CSONKA OF BRINKS 30R4 (P)
TELPARA HILLS MUNDINE 820J2 (P) (AI)
TELPARA HILLS MISS L11 820D4 (P)
BIMBADEEN Q Q003 (P) (AI)
BIMBADEEN Q G65 (P)
BIMBADEEN Q K303 (P)

Lovely soft stylish Qantas son, with great Brangus style and balance. Tsar is VP and offers homozygous poll and black coat. EBVs indicate suitability for heifer joining.

Purchaser: \$

30		
★ REGISTERED ★		
IDENT.	BIM21RT127	
DOB.	13/10/2021	
% BI.	41.2	
GENS.	2	
BW	-0.1	51%
200D	12	64%
400D	27	60%
600D	27	65%
MCWT	20	54%
MILK	-1	41%
SS	2.6	72%
CWT	16	53%
RBV	0.9	28%
DATE	WEIGHT	
Wean	249kg	
29/05/2023	562kg	
SCROTAL SEMEN	42cm	✓✓
H/POLL	PcPc	
COLOUR	ED/ED	
PV STATUS	VP	

Bimbadeen

TUSCON T4 (P)

CSONKA OF BRINKS 30R4 (P)
OAKLANDS AMBASSADOR (P) (ET)
MISS BRINKS SUNDANCE 392L (P)

S. BIMBADEEN Q MEMPHIS (P)

DOONSIDE BB176-01 (P) (AI)
BIMBADEEN Q D0135 (P)
BIMBADEEN Q P033 (P)

D. BIMBADEEN Q M125 (P)

RUSHTON CSONKA'S FORTUNE (P) (ET)
BIMBADEEN Q GRAPHITE (P)
BIMBADEEN Q D0314 (P)
BONOX 474 (P)
BIMBADEEN Q H114 (P)
BIMBADEEN Q E0020 (P)

Token is a typey young bull with strong growth, fertility and carcase EBV results (top 6% export steer index).

Purchaser: \$

32		
★ REGISTERED ★		
IDENT.	BIM21RT4	
DOB.	26/10/2021	
% BI.	44.1	
GENS.	2	
BW	1.3	48%
200D	18	63%
400D	38	59%
600D	35	63%
MCWT	29	50%
MILK	2	40%
SS	2.7	70%
CWT	20	51%
RBV		
DATE	WEIGHT	
Wean	277kg	
29/05/2023	558kg	
SCROTAL SEMEN	36cm	✓✓
H/POLL	PcPc	
COLOUR	ED/ED	
PV STATUS	VS	

Bimbadeen

TANGIER T140 (P)

DOONSIDE IRA HAYES (P) (AI)
BIMBADEEN Q KAKADU (P)
BIMBADEEN Q Q105 (P)

S. BIMBADEEN Q NULLABOR N78 (P)

GREENDALE Y181 (P)
BIMBADEEN Q G0200 (P)
BIMBADEEN Q Q019 (P)

RUSHTON CSONKA'S FORTUNE (P) (ET)
BIMBADEEN Q KOSCIUSZKO (P)
BIMBADEEN Q G173 (P)

D. BIMBADEEN Q N144 (P)

DOONSIDE IRA HAYES (P) (AI)
BIMBADEEN Q J66 (P)
BIMBADEEN Q D221 (P)

The final Nullabor son in the sale, Tangier offers very strong growth and carcass EBVs (top 6% 600dw and top 9% carcass weight) with homozygous poll and black coat DNA. (Morph 92%)

Purchaser: \$

33		
★ REGISTERED ★		
IDENT.	BIM21RT140	
DOB.	27/10/2021	
% BI.	45.7	
GENS.	3	
BW	0.8	46%
200D	13	59%
400D	33	60%
600D	43	63%
MCWT	49	50%
MILK	-1	36%
SS	0.5	70%
CWT	22	51%
RBV		
DATE	WEIGHT	
Wean	281kg	
29/05/2023	610kg	
SCROTAL SEMEN	36cm ✓ ✓	
H/POLL	PcPc	
COLOUR	ED/ED	
PV STATUS	VS	

Bimbadeen

TONGA T160 (P)

CSONKA OF BRINKS 30R4 (P)
OAKLANDS AMBASSADOR (P) (ET)
MISS BRINKS SUNDANCE 392L (P)

S. BIMBADEEN Q PILOT P33 (P)

DOONSIDE DR MOK (S)
BIMBADEEN Q G159 (P)
BIMBADEEN Q Q007 (P)

DOONSIDE WITCHDOCTOR (P) (AI)
DOONSIDE DR MOK (S)
GREENDALE PRECISE (P)

D. BIMBADEEN Q J173 (P)

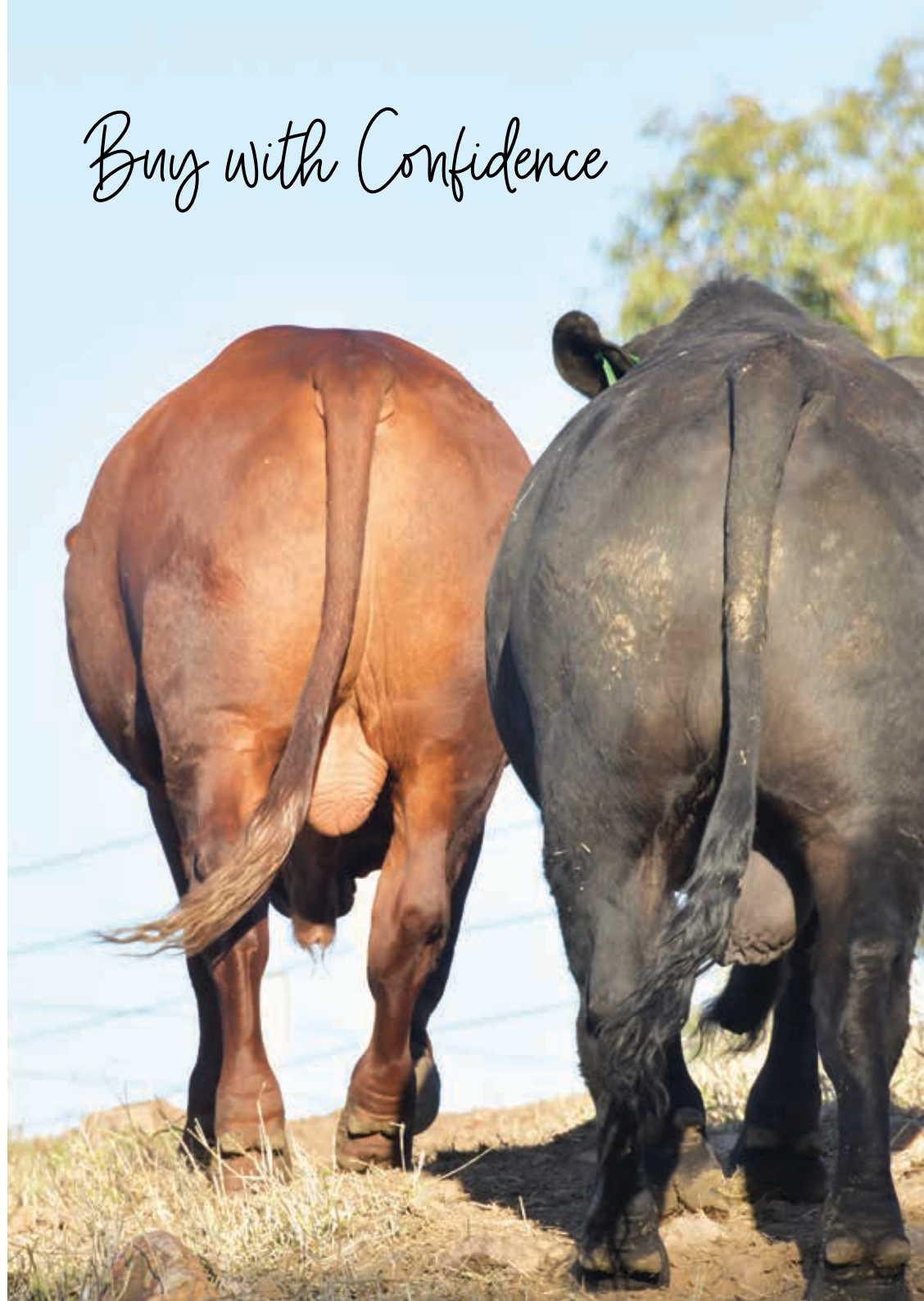
BIMBADEEN Q E118 (P)
BIMBADEEN Q P063 (P)
BIMBADEEN Q L53 (P)

A soft heifer bull by Bimbadeen Pilot, with lovely skin and a superb underline and sheath setting.

Purchaser: \$

34		
★ REGISTERED ★		
IDENT.	BIM21RT160	
DOB.	13/10/2021	
% BI.	45.5	
GENS.	4	
BW	-0.5	50%
200D	6	65%
400D	14	62%
600D	17	65%
MCWT	21	52%
MILK	-5	43%
SS	-0.7	73%
CWT	11	53%
RBV	0.6	26%
DATE	WEIGHT	
Wean	224kg	
29/05/2023	566kg	
SCROTAL SEMEN	32cm ✓ ✓	
H/POLL	PcPc	
COLOUR	ED/E+	
PV STATUS	VS	

Buy with Confidence





Bimbadeen

TOMAHAWK T228^(P)

DUARRAN BERESFORD (P)
DUARRAN FLINDERS 50% ** (P)
DUARRAN INDINA A888 (P)

S. TANNYFOIL MAVERICK (P)

DUARRAN EDDIE (P)
TANNYFOIL GLENLEIGH (P)
TANNYFOIL B76 (P)

PFR IMPROVER 77TH'S 600/6 (S)
PFR IMP 600TH'S 705/4 JACKPOT (P)
MISS PFR 548/0 (S)

D. BIMBADEEN Q P0164 (P)

BIMBADEEN Q FIRE (P)
BIMBADEEN Q L152 (P)
BIMBADEEN Q F349 (P)

A deceptively big red Brangus bull with good nature and plenty of bone.

By Tannyfoil Maverick, Tomahawk has very strong raw data and excellent morphology results (94%).

Purchaser: \$

46

35

★ REGISTERED ★

IDENT. BIM21RT228
DOB. 17/9/2021
% BI. 52.1
GENS. 3

BW	0.2	46%
200D	8	62%
400D	5	56%
600D	14	61%
MCWT	18	48%
MILK	-1	27%
SS	0.3	68%
CWT	5	47%
RBV		

DATE	WEIGHT
Wean	297kg
29/05/2023	640kg

SCROTAL SEMEN 35cm ✓✓

H/POLL PcPc
COLOUR e/e
PV STATUS VS

Bimbadeen

TEACHER T222^(P)

DOONSIDE RB 210-03 OLIVER (P) (AI)
DOONSIDE SHIRAZ (P)
DOONSIDE RB 3689-04 (P)

S. REDLINE OAKLEY 8/315 (P)

DUARRAN KELSO (P)
REDLINE DIVA (S)
REDLINE 435 (P)

HUONFELS JACOB RIO (S) (AI)
BIMBADEEN Q F1 (P) (ET)
WATERFRONT X159 (P)

D. BIMBADEEN Q N191 (P)

BRANGUS BULL (P)
BIMBADEEN Q J313 (P)
BRANGUS COW (P)

Just so stylish! Teacher is a quiet, cherry red Brangus bull by Redline Oakley with a superb sheath design, great polled Brangus head and slick skin. (92% morph)

Purchaser: \$

47

36

★ REGISTERED ★

IDENT. BIM21RT222
DOB. 1/10/2021
% BI. 54.0
GENS. 1

BW	-1.7	45%
200D	0	61%
400D	19	57%
600D	15	61%
MCWT	20	48%
MILK	-1	33%
SS	0.5	70%
CWT	12	48%
RBV		

DATE	WEIGHT
Wean	269kg
29/05/2023	594kg

SCROTAL SEMEN 36cm ✓✓

H/POLL PcPc
COLOUR e/e
PV STATUS VS



Bimbadeen

TSUNAMI T385 (P)

DUARRAN BERESFORD (P)
DUARRAN FLINDERS 50% ** (P)
DUARRAN INDINA A888 (P)

S. TANNYFOIL MAVERICK (P)

DUARRAN EDDIE (P)
TANNYFOIL GLENLEIGH (P)
TANNYFOIL B76 (P)

D. BRANGUS COW (P)

A strong upstanding young bull with plenty of bone and sire appeal
(like sire Tannyfoil Maverick). Excellent fertility results (86% morph)

Purchaser: \$
48

37

★ ENROLLED ★

IDENT. BIM21ET385
DOB. 27/10/2021
% BI. 51.9
GENS.

BW	-0.1	38%
200D	11	50%
400D	14	50%
600D	17	58%
MCWT	20	45%
MILK		
SS	1.1	66%
CWT	10	44%
RBV		

DATE	WEIGHT
Wean	237kg
29/05/2023	608kg

SCROTAL SEMEN 39cm ✓✓

H/POLL PcPc
COLOUR e/e
PV STATUS VS

Bimbadeen

TOPAZ T236 (P)

DUARRAN BERESFORD (P)
DUARRAN FLINDERS 50% ** (P)
DUARRAN INDINA A888 (P)

S. TANNYFOIL MAVERICK (P)

DUARRAN EDDIE (P)
TANNYFOIL GLENLEIGH (P)
TANNYFOIL B76 (P)

D. BIMBADEEN Q H302 (P)

MUAN ANDY (P) (AI)
DOONSIDE 565-06 (P)
DOONSIDE RB 3146-03 (P) (AI)
DOONSIDE 553 (P) (AI)
BIMBADEEN Q R131 (P)
BIMBADEEN Q N491 (P)

Homozygous poll, good slick coat and a 10 for tenderness!
TOPAZ has a neat underline, good structure and broad muzzle.

Purchaser: \$
49

38

★ REGISTERED ★

IDENT. BIM21RT236
DOB. 3/9/2021
% BI. 54.9
GENS. 2

BW	-1.3	44%
200D	1	62%
400D	-4	55%
600D	-3	61%
MCWT	-7	47%
MILK	-1	27%
SS	-0.9	68%
CWT	0	47%
RBV		

DATE	WEIGHT
Wean	268kg
29/05/2023	548kg

SCROTAL SEMEN 35cm ✓✓

H/POLL PcPc
COLOUR E+/e
PV STATUS VS



Bimbadeen

TANGO T223 (P)

DUARRAN BERESFORD (P)
DUARRAN FLINDERS 50% ** (P)
DUARRAN INDINA A888 (P)

S. TANNYFOIL MAVERICK (P)

DUARRAN EDDIE (P)
TANNYFOIL GLENLEIGH (P)
TANNYFOIL B76 (P)

PFR ICONS 707/6 (P)
DOONSIDE 553 (P) (AI)
DOONSIDE 243 (P)

D. BIMBADEEN Q F256 (P)

BIMBADEEN Q NW 875 (P)
BIMBADEEN Q K319 (P)
BIMBADEEN 937 (P)

Lovely gentle natured bull, Tango offers homozygous poll and red coat DNA results with top 2% milk EBV. Very strong fertility measures. Was 2nd top weaning weight in this sale draft.

Purchaser: \$
50

39

★ REGISTERED ★

IDENT. BIM21RT223
DOB. 17/9/2021
% BI. 51.1
GENS. 1

BW	1.3	45%
200D	16	62%
400D	15	57%
600D	24	62%
MCWT	25	48%
MILK	3	34%
SS	0.8	69%
CWT	9	48%
RBV		

DATE	WEIGHT
Wean	362kg
29/05/2023	612kg

SCROTAL SEMEN 39cm ✓✓

H/POLL PcPc
COLOUR e/e
PV STATUS VS

Bimbadeen

TRIBE T227 (P)

DUARRAN BERESFORD (P)
DUARRAN FLINDERS 50% ** (P)
DUARRAN INDINA A888 (P)

S. TANNYFOIL MAVERICK (P)

DUARRAN EDDIE (P)
TANNYFOIL GLENLEIGH (P)
TANNYFOIL B76 (P)

CX HOME RUN 135/P (P)
DOONSIDE FRANCHISE 1938 (P) (AI)
DOONSIDE 4941 (P)

D. BIMBADEEN Q P0200 (P)

BRANGUS BULL B62A38 (P)
BIMBADEEN Q G0281 (P)
BRANGUS COW (P)

Strong, slick skinned red Brangus bull with good bone and sirey outlook. Homozygous poll and black coat DNA results, and great fertility measures (92% morph)

Purchaser: \$
51

40

★ REGISTERED ★

IDENT. BIM21RT227
DOB. 1/10/2021
% BI. 51.8
GENS. 1

BW	-0.3	45%
200D	8	62%
400D	10	56%
600D	13	61%
MCWT	17	48%
MILK	-1	28%
SS	0.1	69%
CWT	7	47%
RBV		

DATE	WEIGHT
Wean	296kg
29/05/2023	620kg

SCROTAL SEMEN 40cm ✓✓

H/POLL PcPc
COLOUR e/e
PV STATUS VS



Bimbadeen

TREND T387 (P)

DOONSIDE RB 210-03 OLIVER (P) (AI)
DOONSIDE SHIRAZ (P)
DOONSIDE RB 3689-04 (P)

S. REDLINE OAKLEY 8/315 (P)

DUARRAN KELSO (P)
REDLINE DIVA (S)
REDLINE 435 (P)

DUARRAN JESSE JAMES (S)
DUARRAN KIMBALL (P)
DUARRAN V752 (P)

D. BIMBADEEN Q D0477 (P)

BIMBADEEN Q 1000 (P)
BIMBADEEN G37 (P)
BIMBADEEN Q C90 (P)

Deep, slick and strong. This dark red bull has terrific pink points, very positive growth and fertility EBVs and excellent fertility measures (90% morph)

Purchaser: \$
52

41

★ REGISTERED ★

IDENT. BIM21FT387
DOB. 17/11/2021
% BI. 52.8
GENS.

BW	0.6	45%
200D	12	61%
400D	33	57%
600D	39	61%
MCWT	45	48%
MILK	4	37%
SS	1.1	69%
CWT	19	48%
RBV		

DATE	WEIGHT
Wean	255kg
29/05/2023	610kg

SCROTAL SEMEN 38cm ✓✓

H/POLL HPc
COLOUR e/e
PV STATUS VS

Bimbadeen

TREBLE T225 (P)

DUARRAN BERESFORD (P)
DUARRAN FLINDERS 50% ** (P)
DUARRAN INDINA A888 (P)

S. TANNYFOIL MAVERICK (P)

DUARRAN EDDIE (P)
TANNYFOIL GLENLEIGH (P)
TANNYFOIL B76 (P)

BRANGUS BULL B62A38 (P)

D. BIMBADEEN Q J5 (P)

BRANGUS COW (P)

Another strong, framey and upstanding bull by sire Tannyfoil Maverick - homozygous poll and red coat with outstanding morphology measures (90%).

Purchaser: \$
53

42

★ REGISTERED ★

IDENT. BIM21FT225
DOB. 3/9/2021
% BI. 54.9
GENS.

BW	-0.2	42%
200D	10	60%
400D	13	55%
600D	16	60%
MCWT	21	47%
MILK	-5	28%
SS	2.3	69%
CWT	8	46%
RBV		

DATE	WEIGHT
Wean	323kg
29/05/2023	630kg

SCROTAL SEMEN 51cm ✓✓

H/POLL PcPc
COLOUR e/e
PV STATUS VS



Bimbadeen

TENOR T226 (P)

DUARRAN BERESFORD (P)
DUARRAN FLINDERS 50% ** (P)
DUARRAN INDINA A888 (P)

S. TANNYFOIL MAVERICK (P)

DUARRAN EDDIE (P)
TANNYFOIL GLENLEIGH (P)
TANNYFOIL B76 (P)

PFR ICONS 707/6 (P)
DOONSIDE 553 (P) (AI)
DOONSIDE 243 (P)

D. BIMBADEEN Q FASHION (P)

KOOROOMBA RED S26 (P)
BIMBADEEN Q K212 (P)
BIMBADEEN Q C10 (P)

A great beefy young bull with a good nature and plenty of swag.
By Maverick out of old show cow, Bimbadeen Fashion.

Purchaser: \$
54

43

★ REGISTERED ★

IDENT. BIM21RT226
DOB. 15/10/2021
% BI. 47.5
GENS. 3

BW	-0.3	46%
200D	8	63%
400D	3	58%
600D	7	63%
MCWT	7	49%
MILK	2	34%
SS	-0.8	70%
CWT	3	49%
RBV		

DATE	WEIGHT
Wean	255kg
29/05/2023	558kg

SCROTAL SEMEN 33cm ✓✓

H/POLL HPc
COLOUR e/e
PV STATUS VS



Bimbadeen

TSU T230 (P)

DUARRAN BERESFORD (P)
DUARRAN FLINDERS 50% ** (P)
DUARRAN INDINA A888 (P)

S. TANNYFOIL MAVERICK (P)

DUARRAN EDDIE (P)
TANNYFOIL GLENLEIGH (P)
TANNYFOIL B76 (P)

CX HOME RUN 135/P (P)
DOONSIDE FRANCHISE 1938 (P) (AI)
DOONSIDE 4941 (P)

D. BIMBADEEN Q N169 (P)

DOONSIDE 553 (P) (AI)
BIMBADEEN Q K141 (P)
BIMBADEEN Q N491 (P)

Tsu offers a great polled Brangus head and darker red colour with beautiful underline. Homozygous poll and red coat. Great temperament.

Purchaser: \$
55

44

★ REGISTERED ★

IDENT. BIM21RT230
DOB. 29/10/2021
% BI. 48.7
GENS. 3

BW	-0.3	42%
200D	6	56%
400D	7	54%
600D	12	61%
MCWT	15	48%
MILK	0	27%
SS	0.5	67%
CWT	5	47%
RBV		

DATE	WEIGHT
Wean	242kg
29/05/2023	544kg

SCROTAL SEMEN 38cm ✓✓

H/POLL PcPc
COLOUR e/e
PV STATUS VS



Bimbadeen

TINDER T229 (P)

DUARRAN BERESFORD (P)
DUARRAN FLINDERS 50% ** (P)
DUARRAN INDINA A888 (P)

S. TANNYFOIL MAVERICK (P)

DUARRAN EDDIE (P)
TANNYFOIL GLENLEIGH (P)
TANNYFOIL B76 (P)

HUONFELS JACOB RIO (S) (AI)

BIMBADEEN Q F1 (P) (ET)
WATERFRONT X159 (P)

D. BIMBADEEN Q P0174 (P)

BRANGUS BULL (P)
BIMBADEEN Q J31 (P)
BRANGUS COW (P)

Tinder is another Maverick son who will grow into a big bull. Homozygous poll and red coat. The perfect bull to add some frame and tidy up underlines.

Purchaser: \$

45		
★ REGISTERED ★		
IDENT.	BIM21RT229	
DOB.	12/11/2021	
% BI.	51.9	
GENS.	1	
BW	-2	42%
200D	-2	56%
400D	-5	54%
600D	-8	61%
MCWT	-8	47%
MILK		
SS	-0.4	66%
CWT	-1	46%
RBV		
DATE	WEIGHT	
Wean	259kg	
29/05/2023	556kg	
SCROTAL SEMEN	34cm	✓✓
H/POLL	PcPc	
COLOUR	e/e	
PV STATUS	VS	

Bimbadeen

TALENT T240 (P)

DOONSIDE RB 210-03 OLIVER (P) (AI)
DOONSIDE SHIRAZ (P)
DOONSIDE RB 3689-04 (P)

S. REDLINE OAKLEY 8/315 (P)

DUARRAN KELSO (P)
REDLINE DIVA (S)
REDLINE 435 (P)

CX HOME RUN 135/P (P)

DOONSIDE FRANCHISE 1938 (P) (AI)
DOONSIDE 4941 (P)

D. BIMBADEEN Q N175 (P)

DOONSIDE 553 (P) (AI)
BIMBADEEN Q F264 (P)
BIMBADEEN Q G55 (P)

A Maverick son with above average growth EBVs.
A good cross-section of Australian red Brangus genetics in pedigree.

Purchaser: \$

47		
★ REGISTERED ★		
IDENT.	BIM21RT240	
DOB.	26/11/2021	
% BI.	51.7	
GENS.	2	
BW	-0.5	45%
200D	5	61%
400D	25	57%
600D	26	61%
MCWT	31	49%
MILK	3	34%
SS	1.6	69%
CWT	13	49%
RBV		
DATE	WEIGHT	
Wean	254kg	
29/05/2023	586kg	
SCROTAL SEMEN	36cm	✓✓
H/POLL	HPc	
COLOUR	e/e	
PV STATUS	VS	

Bimbadeen

TOKYO T238 (P)

DOONSIDE RB 210-03 OLIVER (P) (AI)
DOONSIDE SHIRAZ (P)
DOONSIDE RB 3689-04 (P)

S. REDLINE OAKLEY 8/315 (P)

DUARRAN KELSO (P)
REDLINE DIVA (S)
REDLINE 435 (P)

CX HOME RUN 135/P (P)

DOONSIDE FRANCHISE 1938 (P) (AI)
DOONSIDE 4941 (P)

D. BIMBADEEN Q P0199 (P)

DOONSIDE 553 (P) (AI)
BIMBADEEN Q F349 (P)
BIMBADEEN Q R132 (P)

Frame, depth, strong sirey head and very strong pedigree with lots of Doonside influence on both sides. Excellent morphology result (90%)

Purchaser: \$

46		
★ REGISTERED ★		
IDENT.	BIM21RT238	
DOB.	29/10/2021	
% BI.	53.4	
GENS.	2	
BW	-1.3	47%
200D	0	63%
400D	18	59%
600D	17	63%
MCWT	22	50%
MILK	0	36%
SS	1.1	71%
CWT	10	50%
RBV		
DATE	WEIGHT	
Wean	246kg	
29/05/2023	554kg	
SCROTAL SEMEN	41cm	✓✓
H/POLL	PcPc	
COLOUR	e/e	
PV STATUS	VS	

Bimbadeen

THICC T380 (P)

DUARRAN BERESFORD (P)
DUARRAN FLINDERS 50% ** (P)
DUARRAN INDINA A888 (P)

S. TANNYFOIL MAVERICK (P)

DUARRAN EDDIE (P)
TANNYFOIL GLENLEIGH (P)
TANNYFOIL B76 (P)

PFR ICONS 707/6 (P)

DOONSIDE 553 (P) (AI)
DOONSIDE 243 (P)

D. BIMBADEEN Q G291 (P)

KOOROOMBA RED S26 (P)
BIMBADEEN Q K235 (P)
BRANGUS COW (P)

For breeders seeking a bit of grunt in their red herd - Thicc is a sleek bull with good depth, capacity and temperament. Ideal commercial bull.

Purchaser: \$

48		
★ REGISTERED ★		
IDENT.	BIM21RT380	
DOB.	20/10/2021	
% BI.	48.7	
GENS.	1	
BW	0.9	44%
200D	13	61%
400D	14	56%
600D	24	61%
MCWT	23	48%
MILK	1	30%
SS	1.2	69%
CWT	9	47%
RBV		
DATE	WEIGHT	
Wean	280kg	
29/05/2023	624kg	
SCROTAL SEMEN	40cm	✓✓
H/POLL	HPc	
COLOUR	e/e	
PV STATUS	VS	

Bimbadeen

TEXAS T163 (P)

CSONKA OF BRINKS 30R4 (P)
OAKLANDS AMBASSADOR (P) (ET)
MISS BRINKS SUNDANCE 392L (P)

S. BIMBADEEN Q PILOT P33 (P)

DOONSIDE DR MOK (S)
BIMBADEEN Q G159 (P)
BIMBADEEN Q Q007 (P)

RUSHTON CSONKA'S FORTUNE (P) (ET)
BIMBADEEN Q GRAPHITE (P)
BIMBADEEN Q D0314 (P)

D. BIMBADEEN Q K44 (P)

GREENDALE TRACTION (P)
BIMBADEEN Q E29 (P)
BIMBADEEN Q J115 (P)

As big as... Texas! The frame and capacity in this bull is phenomenal - consistently the top weight bull in the catalogue. Homozygous poll and black coat. Excellent fertility results (80/87).

Purchaser: \$

49		
★ REGISTERED ★		
IDENT.	BIM21RT163	
DOB.	1/9/2021	
% BI.	45.0	
GENS.	2	
BW	0.5	41%
200D	12	53%
400D	28	51%
600D	31	49%
MCWT	28	39%
MILK	0	42%
SS	1.8	70%
CWT	17	42%
RBV	0.9	25%
DATE	WEIGHT	
Wean	323kg	
29/05/2023	726kg	
SCROTAL SEMEN	37cm	✓✓
H/POLL	PcPc	
COLOUR	ED/ED	
PV STATUS	VS	

Bimbadeen

TANZANIA T169 (P)

CSONKA OF BRINKS 30R4 (P)
OAKLANDS AMBASSADOR (P) (ET)
MISS BRINKS SUNDANCE 392L (P)

S. BIMBADEEN Q PILOT P33 (P)

DOONSIDE DR MOK (S)
BIMBADEEN Q G159 (P)
BIMBADEEN Q Q007 (P)

TRANSFORMER OF BRINKS (P) (ET)
DOONSIDE IRA HAYES (P) (AI)
DOONSIDE BB 3704-04 (P)

D. BIMBADEEN Q J064 (P)

GREENDALE URANIA (P)
BIMBADEEN Q Q064 (P)
BIMBADEEN Q L311 (P)

The final Pilot son in the draft, Tanzania offers big frame, depth and neat underline. Positive growth EBVs (top 5% retail beef yield).

Purchaser: \$

51		
★ REGISTERED ★		
IDENT.	BIM21RT169	
DOB.	1/9/2021	
% BI.	44.7	
GENS.	3	
BW	1.4	49%
200D	17	64%
400D	31	60%
600D	38	63%
MCWT	38	51%
MILK	-3	42%
SS	-0.8	71%
CWT	21	52%
RBV	1.1	27%
DATE	WEIGHT	
Wean	324kg	
29/05/2023	672kg	
SCROTAL SEMEN	37cm	✓✓
H/POLL	HPc	
COLOUR	ED/ED	
PV STATUS	VS	

Bimbadeen

TOBAGO T165 (P)

CSONKA OF BRINKS 30R4 (P)
OAKLANDS AMBASSADOR (P) (ET)
MISS BRINKS SUNDANCE 392L (P)

S. BIMBADEEN Q PILOT P33 (P)

DOONSIDE DR MOK (S)
BIMBADEEN Q G159 (P)
BIMBADEEN Q Q007 (P)

CSONKA OF BRINKS 30R4 (P)
OAKLANDS AMBASSADOR (P) (ET)
MISS BRINKS SUNDANCE 392L (P)

D. BIMBADEEN Q M17 (P)

GREENDALE Y0035 (P)
BIMBADEEN Q E27 (P)
BIMBADEEN G128 (P)

Another fertile Pilot son with a lot to recommend him. Terrific underline, and good even body type. Top 4% retail beef yield EBV.

Purchaser: \$

50		
★ REGISTERED ★		
IDENT.	BIM21RT165	
DOB.	1/9/2021	
% BI.	40.0	
GENS.	3	
BW	0.7	52%
200D	14	66%
400D	25	63%
600D	30	66%
MCWT	25	54%
MILK	2	43%
SS	0.8	74%
CWT	17	55%
RBV	1.2	30%
DATE	WEIGHT	
Wean	313kg	
29/05/2023	628kg	
SCROTAL SEMEN	40cm	✓✓
H/POLL	PcPc	
COLOUR	ED/ED	
PV STATUS	VS	

Bimbadeen

TRITON T203 (P)

LUNAR FRED (P)
BINDAREE CRAFTSMAN C432 (P)
BINDAREE O497 (P)

S. FOREST HILLS FAIR DINKUM 1168 (P)

KAJARABIE 991 (S)
FOREST HILLS DARLA 723 (P)
KAJARABIE E095 (P)

LEAD GUN OF BRINKS 222K14 (P)
WASHINGTON OF BRINKS 302S47 (P)
MS BRINKS BRIGHT SIDE 302L9 (P)

D. BIMBADEEN Q P0117 (P)

DOONSIDE 565-06 (P)
BIMBADEEN Q L129 (P)
BIMBADEEN Q N0315 (P)

Lovely sleek, even young bull by stylish sire Forest Hills Fair Dinkum. Homozygous poll and black coat. EBVs indicate suitability for heifer joining.

Purchaser: \$

52		
★ REGISTERED ★		
IDENT.	BIM21RT203	
DOB.	12/11/2021	
% BI.	49.1	
GENS.	2	
BW	-0.8	47%
200D	8	58%
400D	17	58%
600D	10	62%
MCWT	4	49%
MILK	2	29%
SS	-0.4	68%
CWT	9	49%
RBV		
DATE	WEIGHT	
Wean	254kg	
29/05/2023	542kg	
SCROTAL SEMEN	37cm	✓✓
H/POLL	PcPc	
COLOUR	ED/ED	
PV STATUS	VP	

Bimbadeen

TRADER T136 (P)

CSONKA OF BRINKS 30R4 (P)
TELPARA HILLS MUNDINE 820J2 (P) (AI)
TELPARA HILLS MISS L11 820D4 (P)

S. BIMBADEEN Q P80 (P)

DOONSIDE IRA HAYES (P) (AI)
BIMBADEEN Q G230 (P)
BIMBADEEN Q K78 (S)

D. BRANGUS COW (P)

Super tidy young bull with excellent semen results (95% morphology).
EBVs indicate suitability for heifer joining.

Purchaser: \$

53		
★ ENROLLED ★		
IDENT.	BIM21ET136	
DOB.	13/10/2021	
% BI.	45.1	
GENS.		
BW	-0.3	35%
200D	13	44%
400D	24	47%
600D	21	54%
MCWT	19	42%
MILK	-4	25%
SS	0.1	63%
CWT	15	41%
RBY		
DATE	WEIGHT	
Wean	279kg	
29/05/2023	522kg	
SCROTAL	36cm	
SEMEN	✓ ✓	
H/POLL	HPc	
COLOUR	ED/ED	
PV STATUS	VS	

Bimbadeen

TOWNSEND T392 (P)

CSONKA OF BRINKS 30R4 (P)
OAKLANDS AMBASSADOR (P) (ET)
MISS BRINKS SUNDANCE 392L (P)

S. BIMBADEEN Q MEMPHIS (P)

DOONSIDE BB176-01 (P) (AI)
BIMBADEEN Q D0135 (P)
BIMBADEEN Q P033 (P)

RUSHTON CSONKA'S FORTUNE (P) (ET)
BIMBADEEN Q KOSCIUSZKO (P)
BIMBADEEN Q G173 (P)

D. BIMBADEEN Q N53 (P)

BRANGUS BULL B62A38 (P)
BIMBADEEN Q J299 (P)
BRANGUS COW B62A38 (P)

Another Memphis son showcasing excellent underline and skin.
Fertility measures outstanding (85/91). Homozygous poll and black coat.
Full brother Bimbadeen Reverend R138 (\$12,000 2021).

Purchaser: \$

54		
★ REGISTERED ★		
IDENT.	BIM21RT392	
DOB.	19/10/2021	
% BI.	48.2	
GENS. 1		
BW	-0.4	45%
200D	10	58%
400D	28	58%
600D	23	63%
MCWT	16	51%
MILK	-2	38%
SS	1.6	70%
CWT	16	50%
RBY	0.9	25%
DATE	WEIGHT	
Wean	212kg	
29/05/2023	536kg	
SCROTAL	35cm	
SEMEN	✓ ✓	
H/POLL	PcPc	
COLOUR	ED/ED	
PV STATUS	VS	



Temperament Goals

Bimbadeen TRUMAN T3 (P) at age 18 months, inspecting the pasture with Mark.



Bimbadeen

TORQUAY T404 (P)

BONOX 326 (P)
 BONOX 493 (P)
 BONOX B155 (P)

S. TRIPLE B PINNACLE P313 (P) (AI)

JETT 99H1 (P)
 TRIPLE B LUCY L179 (P)
 TRIPLE B LUCY H489 (P)

CSONKA OF BRINKS 30R4 (P)
 OAKLANDS AMBASSADOR (P) (ET)
 MISS BRINKS SUNDANCE 392L (P)

D. BIMBADEEN Q P64 (P)

GREENDALE Y181 (P)
 BIMBADEEN Q E73 (P)
 BIMBADEEN Q Q088 (P)

Lots to like - even, sleek, very tidy with excellent fertility measures (85/86). Homozygous poll and black coat, tenderness of 9. Dam traces back to the great Greendale Y181 (EBV curvebender).

Purchaser: \$
 62

55

★ REGISTERED ★

IDENT. BIM21RT404
 DOB. 18/12/2021
 % BI. 44.7
 GENS. 3

BW	0.1	46%
200D	9	56%
400D	21	56%
600D	23	62%
MCWT	20	52%
MILK	0	37%
SS	3	67%
CWT	13	50%
RBV	0.6	32%

DATE	WEIGHT
Wean	227kg
29/05/2023	570kg

SCROTAL 42cm
 SEMEN ✓✓

H/POLL PcPc
 COLOUR ED/ED
 PV STATUS VS

Bimbadeen

TIBERIUS T406 (P)

SUHN'S NEXT STEP 331R7 (P)
 TRIPLE B JASPER J531 (P) (ET)
 TRIPLE B MADDISON D176 (P)

S. TRIPLE B NOBLE N405 (P)

YABBA-DO D43 (P) (ET)
 TRIPLE B CORDELIA K23 (P)
 TRIPLE B CORDELIA E275 (P)

D. BRANGUS COW (P)

Very stylish and tidy young bull with very strong fertility measures (94% morph). Enrolled son of Triple B Noble 405. Positive growth and fertility EBVs.

Purchaser: \$
 63

56

★ ENROLLED ★

IDENT. BIM21ET406
 DOB. 20/12/2021
 % BI. 46.5
 GENS.

BW	-0.5	41%
200D	12	51%
400D	27	53%
600D	25	59%
MCWT	23	48%
MILK		
SS	2	67%
CWT	14	47%
RBV	0.1	27%

DATE	WEIGHT
Wean	288kg
29/05/2023	600kg

SCROTAL 42cm
 SEMEN ✓✓

H/POLL PcPc
 COLOUR ED/e
 PV STATUS VS



Bimbadeen

TRACTION T410 (P)

LEAD GUN OF BRINKS 222K14 (P)
 CSONKA OF BRINKS 30R4 (P)
 MISS BRINKS UPPERCUT 30L18 (P)

S. PALGROVE NITRO N250 (P) (AI)

W C C SPECIAL DESIGN L309 (P)
 STONEY POINT YANKEE B121 (P)
 STONEY POINT YANKEE QUEEN Y33 (P)

D. BRANGUS COW (P)

By Palgrove Nitro N250 and showcasing his sire's lovely even body type and strong growth - offering top 10% weight and carcase EBVs. Fertility measures excellent (80/84)

Purchaser: \$
64

57

★ ENROLLED ★

IDENT. BIM21ET410
 DOB. 23/12/2021
 % BI. 34.3
 GENS.

BW	2.2	40%
200D	21	51%
400D	37	52%
600D	45	57%
MCWT	31	45%
MILK		
SS	1.2	66%
CWT	22	45%
RBV		

DATE	WEIGHT
Wean	288kg
29/05/2023	628kg

SCROTAL SEMEN 35cm ✓✓

H/POLL PcPc
 COLOUR ED/E+
 PV STATUS VS



Bimbadeen

TRAIN T411 (P)

SUHN'S NEXT STEP 331R7 (P)
 TRIPLE B JASPER J531 (P) (ET)
 TRIPLE B MADDISON D176 (P)

S. TRIPLE B NOBLE N405 (P)

YABBA-DO D43 (P) (ET)
 TRIPLE B CORDELIA K23 (P)
 TRIPLE B CORDELIA E275 (P)

D. BRANGUS COW (P)

Train is a slick coated and balanced young bull by Triple B Noble N405. Homozygous poll and black coat DNA results.

Purchaser: \$
65

58

★ ENROLLED ★

IDENT. BIM21ET411
 DOB. 18/12/2021
 % BI. 46.5
 GENS.

BW	-0.5	41%
200D	12	51%
400D	26	53%
600D	25	59%
MCWT	24	48%
MILK		
SS	0.2	67%
CWT	15	47%
RBV	0.2	27%

DATE	WEIGHT
Wean	273kg
29/05/2023	578kg

SCROTAL SEMEN 35cm ✓✓

H/POLL PcPc
 COLOUR ED/ED
 PV STATUS VS





Bimbadeen

TENTERFIELD T20 (P)

LUNAR FRED (P)
 BINDAREE CRAFTSMAN C432 (P)
 BINDAREE 0497 (P)

S. FOREST HILLS FAIR DINKUM 1168 (P)

KAJARABIE 991 (S)
 FOREST HILLS DARLA 723 (P)
 KAJARABIE E095 (P)

CSONKA OF BRINKS 30R4 (P)
 OAKLANDS AMBASSADOR (P) (ET)
 MISS BRINKS SUNDANCE 392L (P)

D. BIMBADEEN Q P73 (P)

DOONSIDE BB176-01 (P) (AI)
 BIMBADEEN Q Q015 (P)
 BIMBADEEN Q J125 (P)

Tenterfield is another stylish, fertile Forest Hills Fair Dinkum son, with homozygous poll and black coat DNA and very strong fertility measures. (87% morph)

Purchaser: \$

66

59

★ REGISTERED ★

IDENT. BIM21RT20
 DOB. 26/10/2021
 % BI. 44.9
 GENS. 3

BW	0.6	49%
200D	16	63%
400D	27	60%
600D	23	63%
MCWT	15	50%
MILK	4	33%
SS	0.4	71%
CWT	14	51%
RBV		

DATE	WEIGHT
Wean	290kg
29/05/2023	586kg

SCROTAL 35cm
 SEMEN ✓✓

H/POLL PcPc
 COLOUR ED/ED
 PV STATUS VP

Bimbadeen

TAMWORTH T15 (P)

CSONKA OF BRINKS 30R4 (P)
 OAKLANDS AMBASSADOR (P) (ET)
 MISS BRINKS SUNDANCE 392L (P)

S. BIMBADEEN Q MEMPHIS (P)

DOONSIDE BB176-01 (P) (AI)
 BIMBADEEN Q D0135 (P)
 BIMBADEEN Q P033 (P)

BRANGUS BULL (P)

D. BIMBADEEN Q J205 (P)

BRANGUS COW (P)

The final Memphis son in this year's catalogue, Tamworth offers his trademark Brangus style with great skin, structure and double poll and black coat genes. Dam J205 9 calves in 9 years.

Purchaser: \$

67

60

★ REGISTERED ★

IDENT. BIM21FT15
 DOB. 12/10/2021
 % BI. 46.8
 GENS.

BW	-0.4	45%
200D	13	61%
400D	27	56%
600D	17	61%
MCWT	8	48%
MILK	-3	37%
SS	0.9	69%
CWT	15	48%
RBV		

DATE	WEIGHT
Wean	280kg
29/05/2023	558kg

SCROTAL 37cm
 SEMEN ✓ Q

H/POLL PcPc
 COLOUR ED/ED
 PV STATUS VS



Bimbadeen

TAMBO T105 (P)

LEAD GUN OF BRINKS 222K14 (P)
 SINGLETARY OF BRINKS 675R (P)
 MS BRINKS UPPERCUT 209N11 (P)

S. BIMBADEEN Q LITCHFIELD L12 (P) (ET)

SUNDANCE OF BRINKS 392G9 (P) (ET)
 TELPARA HILLS MISS SUNDANCE 541D6 (P) (ET)
 MISS BRINKS KO 541L41 (P) (ET)

GREENDALE Z253 (P)
 BIMBADEEN Q E548 (P)
 BIMBADEEN Q L43 (P)

D. BIMBADEEN Q L70 (P)

COUTI-OUTI JOCK (P)
 BIMBADEEN Q R378 (P)
 BIMBADEEN Q H123 (P)

By one of our longest-serving sires, Bimbadeen Litchfield L12 (ET).
 Tambo offers a smooth skin and terrific tidy underline with homozygous poll
 and black coat DNA. Ready to work.

Purchaser: \$
 68

61

★ REGISTERED ★

IDENT. BIM21RT105
 DOB. 29/9/2021
 % BI. 45.0
 GENS. 2

BW	-1.1	47%
200D	3	60%
400D	11	56%
600D	6	61%
MCWT	1	49%
MILK	-1	37%
SS	-0.6	69%
CWT	8	48%
RBV	0.7	25%

DATE	WEIGHT
Wean	254kg
29/05/2023	520kg

SCROTAL	32cm
SEMEN	✓✓

H/POLL	PcPc
COLOUR	ED/ED
PV STATUS	VS

Bimbadeen

TANAMI T102 (P)

LEAD GUN OF BRINKS 222K14 (P)
 SINGLETARY OF BRINKS 675R (P)
 MS BRINKS UPPERCUT 209N11 (P)

S. BIMBADEEN Q LITCHFIELD L12 (P) (ET)

SUNDANCE OF BRINKS 392G9 (P) (ET)
 TELPARA HILLS MISS SUNDANCE 541D6 (P) (ET)
 MISS BRINKS KO 541L41 (P) (ET)

TRANSFORMER OF BRINKS (P) (ET)
 DOONSIDE IRA HAYES (P) (AI)
 DOONSIDE BB 3704-04 (P)

D. BIMBADEEN Q J093 (P)

GREENDALE UPHOLD (P)
 BIMBADEEN Q R62 (P)
 BIMBADEEN Q F195+96 (P)

Another super tidy Litchfield son with excellent fertility measures (85/88).
 Out of daughter of our long-term weight EBV star sire Doonside Ira Hayes.

Purchaser: \$
 69

62

★ REGISTERED ★

IDENT. BIM21RT102
 DOB. 15/9/2021
 % BI. 41.3
 GENS. 4

BW	0.6	50%
200D	13	63%
400D	24	59%
600D	26	63%
MCWT	27	52%
MILK	-2	44%
SS	-0.9	71%
CWT	16	52%
RBV	0.7	27%

DATE	WEIGHT
Wean	315kg
29/05/2023	624kg

SCROTAL	34cm
SEMEN	✓✓

H/POLL	PcPc
COLOUR	ED/ED
PV STATUS	VS



Bimbadeen

TARZAN T8 (P)(IVF)

LEAD GUN OF BRINKS 222K14 (P)
 CSONKA OF BRINKS 30R4 (P)
 MISS BRINKS UPPERCUT 30L18 (P)

S. OAKLANDS AMBASSADOR (P) (ET)

SUNDANCE OF BRINKS 392G9 (P) (ET)
 MISS BRINKS SUNDANCE 392L (P)
 MISS BRINKS TROOPER 392G18 (P)

NCC EL TORO (H) (IVF)

CLUKAN AXEL 333/7 (P) (ET)

CLUKAN DESTINY 254/3 (P) (ET)

D. CAMBIL FLIPPER 6058 (P) (IVF)

JAFFRA GRANDE 4028M (P)
 JAFFRA FLIPPER 4616 (P)
 JAFFRA MADONNAH 3384 (H)

An exciting young IVF bull with plenty of bos indicus swag.

Tarzan is by our longtime star Brangus sire Oaklands Ambassador (ET) out of stylish Brahman donor Cambil Flipper 6058 (IVF).

Purchaser: \$

70

63

★ REGISTERED ★

IDENT. BIM21FT8
 DOB. 12/11/2021
 % BI. 68.7
 GENS.

BW	0.2	54%
200D	12	61%
400D	17	59%
600D	12	62%
MCWT	5	56%
MILK	-2	55%
SS	-0.9	66%
CWT	12	56%
RBV	1.4	46%

DATE	WEIGHT
Wean	314kg
29/05/2023	578kg

SCROTAL 34cm
 SEMEN ✓ Q

H/POLL HPC
 COLOUR ED/E+
 PV STATUS VP

Bimbadeen

TEMPTATION T201 (P)(IVF)

LEAD GUN OF BRINKS 222K14 (P)
 CSONKA OF BRINKS 30R4 (P)
 MISS BRINKS UPPERCUT 30L18 (P)

S. OAKLANDS AMBASSADOR (P) (ET)

SUNDANCE OF BRINKS 392G9 (P) (ET)
 MISS BRINKS SUNDANCE 392L (P)
 MISS BRINKS TROOPER 392G18 (P)

NCC EL TORO (H) (IVF)

CLUKAN AXEL 333/7 (P) (ET)

CLUKAN DESTINY 254/3 (P) (ET)

D. CAMBIL FLIPPER 6058 (P) (IVF)

JAFFRA GRANDE 4028M (P)
 JAFFRA FLIPPER 4616 (P)
 JAFFRA MADONNAH 3384 (H)

The second of our IVF progeny on offer, with the same mating as previous lot.

Temptation exhibits so much high content Brangus style with outstanding skin and polled head.

Purchaser: \$

71

64

★ REGISTERED ★

IDENT. BIM21FT201
 DOB. 8/11/2021
 % BI. 68.7
 GENS.

BW	0.5	51%
200D	13	55%
400D	20	54%
600D	19	55%
MCWT	14	51%
MILK	-2	55%
SS	-0.1	55%
CWT	15	51%
RBV	1.5	46%

DATE	WEIGHT
Wean	247kg
29/05/2023	594kg

SCROTAL 34cm
 SEMEN ✓

H/POLL PcPc
 COLOUR ED/E+
 PV STATUS VP



Bimbadeen

TECTONIC T191 (P)(IVF)

MC BOULDER 889Z14 (P) (AI)
 MC GRANITE 834B (P)
 MC MS 778 TRAVELLER 834Z (P)

S. BIMBADEEN Q QUARTZ (P) (IVF)
 GREENDALE U83 (P) (AI)
 BIMBADEEN Q Q105 (P)
 BIMBADEEN Q H234 (P)

LANCEFIELD D DONCASTER 2771/D (H)
 GRACELAND NOISY BOY 02 (P)
 LANCEFIELD D SHANOAH 2028/D (P)

D. AKAMA ELLA (P)
 SAVANNAH DREAM BOY 161 (H) (IVF)
 AKAMA BETTY BOO (H)
 AKAMA LADY LIBERTY (H)

Our final IVF offering by Bimbadeen Quartz Q1 (equal top price bull 2020 sale) out of uber stylish polled Brahman dam Akama Ella. Tectonic also offers top 9% retail beef yield and excellent fertility (75/88)

Purchaser: \$

65

★ REGISTERED ★

IDENT. BIM21FT191
 DOB. 11/11/2021
 % BI. 69.6
 GENS.

BW	0	38%
200D	11	38%
400D	26	37%
600D	27	39%
MCWT	33	36%
MILK	-1	40%
SS	-0.5	35%
CWT	18	36%
RBV	0.9	34%

DATE	WEIGHT
Wean	281kg
29/05/2023	552kg

SCROTAL SEMEN 33cm ✓✓

H/POLL HPC
 COLOUR ED/E+
 PV STATUS VP

Bimbadeen

TOOVEY T46 (P)

CSONKA OF BRINKS 30R4 (P)
 OAKLANDS AMBASSADOR (P) (ET)
 MISS BRINKS SUNDANCE 392L (P)

S. BIMBADEEN Q MANLY (P)
 GREENDALE TRACTION (P)
 BIMBADEEN Q D56 (P)
 BIMBADEEN Q M011 (P)

DOONSIDE IRA HAYES (P) (AI)
 BIMBADEEN Q KAKADU (P)
 BIMBADEEN Q Q105 (P)

D. BIMBADEEN Q N135 (P)
 DOONSIDE IRA HAYES (P) (AI)
 BIMBADEEN Q K67 (P)
 BIMBADEEN Q R2 (P)

By growthy home-bred sire Bimbadeen Manly, Toovey offers a very neat sheath design, slick coat and homozygous poll and black coat DNA.

Purchaser: \$

66

★ REGISTERED ★

IDENT. BIM21RT46
 DOB. 9/11/2021
 % BI. 46.0
 GENS. 3

BW	-1.2	46%
200D	3	58%
400D	12	58%
600D	6	62%
MCWT	1	50%
MILK	-1	38%
SS	-0.4	68%
CWT	7	50%
RBV		

DATE	WEIGHT
Wean	245kg
29/05/2023	540kg

SCROTAL SEMEN 35cm ✓Q

H/POLL PcPc
 COLOUR ED/ED
 PV STATUS VS



Bimbadeen

TARIFF T86 (P)

LUNAR FRED (P)
 BINDAREE CRAFTSMAN C432 (P)
 BINDAREE 0497 (P)

S. FOREST HILLS FAIR DINKUM 1168 (P)

KAJARABIE 991 (S)
 FOREST HILLS DARLA 723 (P)
 KAJARABIE E095 (P)

CB HOMBRE 541T3 (P)
 TELPARA HILLS JACKMAN 541H17 (P) (ET)
 TELPARA HILLS MISS SINGLETARY 541E (P) (ET)

D. BIMBADEEN Q P17 (P)

DOONSIDE IRA HAYES (P) (AI)
 BIMBADEEN Q J136 (P)
 BIMBADEEN Q R608 (P)

A lovely soft young Brangus bull with great coat, sheath design and fertility results (80/85). Positive growth EBVs and homozygous poll and black coat DNA results.

Purchaser: \$

74

67

★ REGISTERED ★

IDENT. BIM21RT86
 DOB. 13/11/2021
 % BI. 45.7
 GENS. 4

BW	0.7	48%
200D	14	63%
400D	29	60%
600D	29	63%
MCWT	28	50%
MILK	0	33%
SS	1	70%
CWT	16	51%
RBV		

DATE	WEIGHT
Wean	253kg
29/05/2023	566kg

SCROTAL SEMEN 38cm ✓✓

H/POLL PcPc
 COLOUR ED/ED
 PV STATUS VP

Bimbadeen

TRAFFIC T89 (P)

LUNAR FRED (P)
 BINDAREE CRAFTSMAN C432 (P)
 BINDAREE 0497 (P)

S. FOREST HILLS FAIR DINKUM 1168 (P)

KAJARABIE 991 (S)
 FOREST HILLS DARLA 723 (P)
 KAJARABIE E095 (P)

CSONKA OF BRINKS 30R4 (P)
 TELPARA HILLS MUNDINE 820J2 (P) (AI)
 TELPARA HILLS MISS L11 820D4 (P)

D. BIMBADEEN Q P87 (P)

GREENDALE TRACTION (P)
 BIMBADEEN Q E29 (P)
 BIMBADEEN Q J115 (P)

The last Forest Hills Fair Dinkum-sired lot on offer, Traffic displays that great soft even body type and excellent sheath design. Great fertility results (80/94).

Purchaser: \$

75

68

★ REGISTERED ★

IDENT. BIM21RT89
 DOB. 9/11/2021
 % BI. 45.4
 GENS. 2

BW	-0.5	47%
200D	8	62%
400D	21	58%
600D	22	62%
MCWT	21	50%
MILK	1	33%
SS	1	70%
CWT	12	50%
RBV		

DATE	WEIGHT
Wean	215kg
29/05/2023	550kg

SCROTAL SEMEN 38cm ✓✓

H/POLL PcPc
 COLOUR ED/ED
 PV STATUS VP



Bimbadeen

TANK T193 (P)

CSONKA OF BRINKS 30R4 (P)
 TELPARA HILLS MUNDINE 820J2 (P) (AI)
 TELPARA HILLS MISS L11 820D4 (P)

S. BIMBADEEN Q QANTAS Q137 (P)

SUHN'S NEXT STEP 331R7 (P)
 BIMBADEEN Q M138 (P) (ET)
 TELPARA HILLS MISS CSONKA 541H (P) (ET)

CSONKA OF BRINKS 30R4 (P)
 TELPARA HILLS MUNDINE 820J2 (P) (AI)
 TELPARA HILLS MISS L11 820D4 (P)

D. BIMBADEEN Q Q0148 (P)

DOONSIDE IRA HAYES (P) (AI)
 BIMBADEEN Q GIGI (S)
 BIMBADEEN Q K286 (P)

Finishing the catalogue with two terrific Qantas sons - led out by Tank who offers great temperament, growth and carcase EBVs (around top 10%) and fertility (85/92).

Purchaser: \$

69

★ REGISTERED ★

IDENT. BIM21RT193
 DOB. 1/10/2021
 % BI. 39.7
 GENS. 2

BW	1.4	51%
200D	21	64%
400D	36	60%
600D	38	65%
MCWT	31	54%
MILK	0	41%
SS	1.6	72%
CWT	21	53%
RBV	1	29%

DATE	WEIGHT
Wean	302kg
29/05/2023	574kg

SCROTAL	39cm
SEMEN	✓✓

H/POLL	PcPc
COLOUR	ED/E+
PV STATUS	VP

Bimbadeen

TUFF T198 (P)

CSONKA OF BRINKS 30R4 (P)
 TELPARA HILLS MUNDINE 820J2 (P) (AI)
 TELPARA HILLS MISS L11 820D4 (P)

S. BIMBADEEN Q QANTAS Q137 (P)

SUHN'S NEXT STEP 331R7 (P)
 BIMBADEEN Q M138 (P) (ET)
 TELPARA HILLS MISS CSONKA 541H (P) (ET)

BLACKHAWK OF BRINKS 607M12 (P)
 CRC-IFCC MAGNUM 331T (P) (ET)
 SUHN'S MISS CADENCE 331L2 (P)

D. BIMBADEEN Q Q8 (P) (ET)

TROOPER OF BRINKS (S)
 MISS BRINKS TROOPER 541H8 (P)
 MISS BRINKS MILKY WAY 541E4 (S)

Lovely, long and tidy - our final lot Bimbadeen Tuff offers great depth of breeding with very strong EBVs (around top 10% for all growth, carcase, fertility and index measures). Super strong semen results (94% morph).

Purchaser: \$

70

★ REGISTERED ★

IDENT. BIM21RT198
 DOB. 1/10/2021
 % BI. 37.5
 GENS. 4

BW	1.4	50%
200D	19	60%
400D	35	57%
600D	40	62%
MCWT	39	51%
MILK	1	37%
SS	1.7	69%
CWT	21	50%
RBV	0.9	25%

DATE	WEIGHT
Wean	302kg
29/05/2023	630kg

SCROTAL	39cm
SEMEN	✓✓

H/POLL	HPc
COLOUR	ED/e
PV STATUS	VP



Thank You



To everyone who assists and supports us before, during and after the sale,
a huge THANKYOU!

From our own family members working hard in the months leading up to sale day,
the support network of friends and professionals we have around us during the 'pointy'
end of preps, to the buyers and underbidders and agents on sale day
- we are grateful for your belief and support.

We hope buyers secure the lots you are chasing and we look forward
to seeing their progeny in the breeding years ahead.
Enjoy lunch and refreshments before you head home.

Sale Results

	No. Sold	Gross	Top	Average
Bimbadeen Red Bulls				
Bimbadeen Red Bulls				
TOTAL				

The businesses showcased on the following pages work closely
with Bimbadeen to help us produce the quality studstock
we strive to offer you, our buyers.

We thank them for their ongoing support.



CATTLELOGUE
Queen

STAND OUT *from the crowd*



Customized
SALE CATALOGUE DESIGN

- CATTLE
- HORSES
- SHEEP
- GOATS

Advertisements
Promotional Material • Publications
Sale, Trade Show,
Homestead & Property Signage
cattleloguequeen.com.au





RayWhite

We understand the process of buying
and selling rural property

Experienced property agents who *deliver results*

Richard Brosnan 0400 361 114
Ray White Rural Rockhampton

Mark Simpson 0418 792 647
Ray White Biloela

Proven performance for sale and show stock **since 1927**

- Extensive bulk & bagged range
- Palleted & dry custom feeds
- Profession, local service & advice

View our full range of quality beef feed formulated by expert nutritionists.

www.riverina.com.au



VETERINARY GROUP

BULL CHECK ACCREDITED **ON FARM SERVICES** **CUSTOM SEMEN COLLECTION**
FIXED TIME AI SERVICES **PREG CHECK ACCREDITED**



OPEN 5 DAYS + 24/7 AFTER HOURS
ASSISTANCE IN EMERGENCIES

Monto
Mundubbera

8 Lister Street, Monto Q 4630
 5 Willson Avenue, Mundubbera Q 4626

07 4166 1285
07 4165 4386

montovet.com.au

DJ's

Steel & Concrete

We believe in teamwork
Proudly supporting Bimbadeen
to get the job done

Servicing rural Queensland for over 30 years

MONTO • EIDSVOLD • BILOELA
4166 1747 4165 1762 4992 2197

djsteel.com.au



ELDERS RURAL SERVICES BILOELA

For Australian Agriculture

Branch Manager Jaimi Wilkie Ph: 0409 540 773	Agronomy Gavin Lotz Ph: 0419 618 890	Agronomy & Animal Nutrition Danielle Hogarth Ph: 0467 709 660
Stud Stock Randal Spann Ph: 0429 700 332	Insurance Nathan Fairley Ph: 07 4923 7394	Livestock Sales Manager Simon Clark Ph: 0428 498 411
Biloela Branch Ph: 07 4993 8100	Merch Sales Annalise Howard	Accounts & Livestock Admin Angela Rosenblatt



MRT

MONTO RURAL TRADERS

Stocking an extensive range of farming supplies from stockfeed to fencing, we are your locally owned and family-run business with local knowledge to do the job. Your local Stihl, Torro and Honda dealership with an extensive range of outdoor power equipment, complete workshop repairs, and services from chainsaws to ATVs.

Full range of oils from 1lt to 1000lt pods to AD Blue.
Bundy hot gas is available in either refillable bottles or 45kg.

Breno & Eleena Mitchell have just taken over the store
so pop in for a coffee and a chat!

Extensive range of quality custom blend feeds - free delivery on-farm with a smile.
Agents for wet lick in pods or bulk delivered straight to your farm.

P. 4166 3300 Breno 0427 162 337
20 Rutherford Street, Monto Q 4630 • montorural@outlook.com

montorural.com.au





AGRIBUSINESS SPECIALISTS

Moore Australia is a network of business advisors and chartered accountants.

With over 50 years experience, we are the leading firm in the region for primary producers and agribusinesses.

Our specialist team offer agribusinesses comprehensive financial advice on budgeting, family business, succession planning, taxation, superannuation and wealth creation.

www.moore-australia.com.au



Rockhampton
T +61 7 4928 1555
75 High Street
Rockhampton QLD 4701

CONTACT US

Biloela
T +61 7 4995 6677
54 Callide Street
Biloela QLD 4715



DO YOU HAVE THE RIGHT ADVISOR?

Having the right business and financial advisor gives you the valuable support and guidance you need to ensure your business thrives now and is prepared for the challenges of the future.

At Moore Australia, we have a specialised team of business advisors who are experienced working with agribusiness owners. They understand the challenges of the sector and can provide solutions tailored to your individual circumstances.

We take a holistic approach to agribusinesses including:

Strategic Planning.

Develop comprehensive strategic plans that considers market trends, customer needs, regulatory requirements, and other factors that impact the industry. Planning can help you identify opportunities for growth and set clear goals and objectives.

Financial Management.

With unique financial challenges, such as managing cash flow through seasonal cycles, securing financing for capital investments, and managing risks associated with crop yields and market volatility, a business advisor can help you develop financial management strategies that address these challenges and ensure long-term profitability.

Operational Efficiency.

Identify opportunities to improve operational efficiency, streamline supply chains, reduce costs, and increase productivity. This can involve analyzing current processes, identifying bottlenecks, and implementing new technologies or systems to improve efficiency.

Risk Management.

The industry faces a wide range of risks, including weather events, crop disease, pests, and market volatility. A business advisor can help you to develop a risk management plan that addresses these challenges and help you mitigate potential losses.

Overall a business advisor can provide you with a fresh perspective and valuable insights.

Contact our agribusiness team to find out how we can help you.



Vickie White
Partner
Rockhampton



Geoff Arnold
Partner
Biloela

Financial assessment of your business

Growth & expansion strategies for families

Assistance with debt restructure
and refinancing

Assistance with finance
for property purchases

Assistance with government
grants and subsidies

Advisory assistance from start-ups
to established businesses



Lisa Lonsdale
0427 465 170

lisa@lonsdaleagribusiness.com.au



- Fortnightly prime and store cattle sales
- Rural and residential property sales
- Livestock marketing expertise
- Private sales, feedlot marketing, AuctionsPlus

*YOUR LOCAL
LEADERS
IN LIVESTOCK &
PROPERTY*



Offices in Monto & Dalby

www.kellco.com.au

Andrew Cavanagh 0467 662 452
Livestock & Property Sales

Andrew Clarke 0409 170 393
Livestock Sales

Louisa Bambling 0409 205 883
Property sales

Monto Irrigation & Plumbing Supplies

IRRIGEAR

For all your
Irrigation & Pump Requirements
Sales, Service, Design & Installation

07 4166 1363

48 Lister Street, Monto Q 4630

www.montoirrigation.com.au

Sale Quick Links



REGISTER TO BID



ELITE LIVESTOCK



BRANGUS
AUSTRALIA



BIMBADEEN

Pre-register for bid cards and get the latest info online!
Simply scan the relevant QR code below with your smartphone camera.

To PRE-REGISTER for a BID CARD: scan left code below and fill in your details - your bid card will be ready and waiting for you to collect on Sale Day from the KellCo desk.

BIDDING ONLINE or just want to check out the videos?

Scan the ELITE link to go to the Bimbadeen catalogue.

WANT the latest EBVs?

Scan the Brangus Australia link to see the most recent Breedplan run info.

The **Bimbadeen code** takes you straight to our website - where we will share the latest updates and supp sheets.





T bulls being weaned, walked ...and kissed

BUYERS INSTRUCTION



This Buyers Instruction Sheet **MUST be completed in FULL and SIGNED** by the Buyer or their Authorised Representative

NAME _____

ADDRESS _____

_____ P/CODE _____

PHONE _____ MOBILE _____

EMAIL ADDRESS _____

LOTS PURCHASED _____

DESTINATION address (for permit) _____

BID CARD NO.

NO. OF LOTS PURCHASED

DESTINATION	_____	NLIS PIC	_____	_____	_____	_____	_____	_____	_____	_____	_____	_____	_____	_____	_____	_____	_____	_____	_____	_____
-------------	-------	----------	-------	-------	-------	-------	-------	-------	-------	-------	-------	-------	-------	-------	-------	-------	-------	-------	-------	-------

DELIVERY OWNERS TRANSPORT

CARRIER _____ PICK UP TIME/DATE _____

INSURANCE YES INSURANCE AGENT _____

It is up to the buyer to confirm insurance on their purchases post-sale.

INVOICE TO _____

IS ABCA (STUD) REGISTRATION TRANSFER REQUIRED? YES NO

IF YES, NAME & ADDRESS FOR TRANSFER OF REGISTRATION

SIGNED _____ DATE _____

STUD STOCK - AUCTION TERMS & CONDITIONS OF SALE

IMPORTANT NOTICE: All bids shall be treated as offers made upon the following Terms and Conditions of Sale and all persons present are admitted to attend the sale on the basis that they have notice of these Terms and Conditions.

- The highest bidder shall, subject to Condition 2, be the Purchaser provided that the Vendor reserves the right to bid either by himself or through his Agent or Auctioneer and should any dispute arise among the bidders for any lot, during or immediately after the sale of the lot, it shall be settled at the Auctioneers absolute discretion who may, should one of the disputants advance, put the lot or lots up again. The bidding from time to time shall be regulated by the Auctioneer and no bid shall be retracted.
- The sale will be conducted on a "Sale" or "No Sale" basis whereby the lot for sale shall be knocked down to the highest bidder, but the sale will be subject to the acceptance of the highest bid by the Vendor who will immediately after the fall of the hammer declare "Sale" or "No Sale". Should the Vendor reject the bid of the highest bidder such bidder will have the right of first refusal of the lot at the Vendor's nominated price for one hour after the lot has been passed out of the ring on the Terms and Conditions herein set forth in so far as they shall apply.
- The details of the Purchaser, the purchase price and the lot sold as recorded by the sale clerk for and on behalf of the Auctioneer shall be equally binding on both Purchaser and Vendor.
- The Auctioneer expressly reserves the right, without giving any reasons therefore, to:
 - Refuse to acknowledge any bid;
 - Withdraw any lot or lots before or during the sale;
 - Exclude any person from the auction venue should it think fit.
- Each lot in all cases shall be at the risk and expense of the Purchaser upon acceptance of his bid by the Vendor or upon acceptance of the highest bidder's offer by the Vendor whichever shall be the earlier.
- Except as expressly provided in these Terms and Conditions of Sale no guarantee or warranty shall be given in respect of any lot sold under these Conditions as to pedigree, sex, age, breeding condition or otherwise howsoever, and no guarantee, warranty or condition whatsoever shall be implied from any affirmation made before or at the time of the sale, or from any circumstances of the sale, but in all cases where a guarantee is intended the same shall attach and be enforceable only if reduced to writing before delivery of the lot and signed by the Vendor or by the Auctioneer acting as agent for the Vendor, and the absence of such writing shall be conclusive evidence in case of dispute that no guarantee, warranty or condition whatsoever was given or implied.
- In the event of any dispute in respect to the sale of any lot:
 - The Purchaser shall nevertheless be obliged to pay to the Auctioneer the full purchase price and any other monies or interest payable by the Purchaser in accordance with these terms and conditions;
 - The Vendor and the Purchaser shall resolve the dispute between themselves;
 - The Auctioneer shall have no liability or responsibility in regard to the dispute; and
 - No lot shall be returned to the Auctioneer and the Purchaser shall indemnify the Auctioneer for all costs, expenses and damages which the Auctioneer is put to or incurs by reason of the Purchaser so doing.
- The name of the Vendor for whom the Auctioneer acts is acknowledged to have been furnished to Purchasers prior to the sale and further particulars will in all cases be furnished to a Purchaser if required. In the case of any disputes the remedy of the Purchaser shall be against the Vendor only and in no case or under any circumstances against the Auctioneer who is to be regarded for all intents and purposes as agent for a disclosed principal.
- PAYMENT** — Unless prior credit arrangements have been made in writing with the Auctioneer the full purchase price for each lot shall be due and payable to the Auctioneer in cash upon acceptance of the highest bid or the highest bidder's offer by the Vendor and prior to delivery. Notwithstanding that delivery is given to or possession obtained by the purchaser or his representative prior to the payment of the purchase money in full the property in any lot which is sold shall not pass to the Purchaser until the full purchase price and all cheques, promissory notes, bills of exchange, acceptance orders or drafts given in connection with such payment have been paid and liquidated, and until property shall pass, the Purchaser shall hold such lot as bailee, provided that in all cases should such payment not have been made and liquidated within 14 days of the date of the sale the Auctioneer reserves the right to:—
 - Rescind the contract on behalf of the Vendor and repossess and resell any lot;
 - Recover from the Purchaser interest upon the purchase price at a rate per annum which aggregates the AMBA Bill Rate plus two percentum. For the purposes of this condition, the expression "the AMBA Bill Rate" is the rate published by the Australian Merchant Bankers Association in good faith as at the date of the sale as its bill rate for 180 day bills of exchange expressed as a percentage per annum. If at any time the AMBA Bill Rate becomes unavailable for any reason, the Auctioneer shall determine and advise the Purchaser of the interest rate to apply for the purposes of this condition.
 - The Auctioneer is selling as the del credere agent of the Vendor and the full purchase price of any lot sold shall be payable by the Purchaser to the Auctioneer and be fully recoverable by the Auctioneer in its own name.
- If the Purchaser shall neglect or fail to comply with any of the within conditions, any lot purchased by him may be immediately resold by public auction or private contract, with or without notice, at the risk of the former Purchaser, who will be held responsible for all loss and expenses arising out of such resale, and shall not participate in any profit accruing therefrom.
- Any Vendor or Purchaser removing the sale number from any lot after it has been sold will fully indemnify all affected parties for any loss, costs or damage should the lot be wrongly delivered.
- The Purchasers, if any more than one, shall be jointly and severally bound by these Terms and Conditions, and shall jointly and severally carry out and perform same.
- Any person who advances a bid on a lot shall do so on the expressed condition and understanding that should that person's bid be the highest bid and such bid is accepted by the Vendor, then that person will be held personally liable for the price so agreed upon, regardless of the fact that that person may be acting on behalf of another party, either disclosed or undisclosed to the Vendor or Auctioneer, provided however, that this Condition shall not in any way negate the Vendor's right to claim against any principal and in such case the bidder's liability shall be construed to be by way of guarantee.
- The Auctioneer may, should it think fit, make arrangements on a Purchaser's behalf for the feeding, watering, trucking, shipping of and general attendance to any lot after sale but no responsibility will be accepted by the Auctioneer and all such service will be at the Purchaser's risk and expense.
- No lot will be delivered until the sales invoice has been checked and signed by the Purchaser or his duly authorised representative.
- Each lot in all cases shall be sold with all faults, if any, and excepting those conditions and warranties implied by the Trade Practices Act or any applicable State legislation which cannot be contractually excluded and excepting conditions and warranties expressly contained in these Terms and Conditions of Sale, any express or implied condition, statement of warranty, statutory or otherwise, is hereby excluded. The Auctioneer is not liable in respect of any error, misdescription or omission in any particulars appearing or stated regarding the description of pedigrees of any lot offered for sale and no such error, misdescription of omission shall entitle the Purchaser to annual the sale or reject the lot or claim any compensation, damage or abatement in price.

- Each lot will be sold subject to passing all veterinary tests required by the law of the state or country to which the Purchaser intends to transport that particular lot, such tests to be undertaken at the Purchaser's expense and concluded immediately following the sale. In the event of a lot failing to pass these tests, the sale shall be null and void, any purchase moneys paid by the Purchaser shall be refunded and property in the lot shall revert to or remain with the Vendor.
- Guarantees of Fertility:—
 - BULLS** – Save and except for calves at foot, all bulls are guaranteed breeders and to so prove by the later of:
 - twelve months after the date of sale or
 - the animal reaching the age of 24 months
 - FEMALES** – Save and except for female calves at foot, all females are guaranteed to be in calf or go into calf by the later of:
 - 6 months of the date of sale
 - the animal reaching the age of 30 monthsA positive pregnancy test certified by a qualified veterinary surgeon shall be sufficient evidence that the animal is in calf.
 - Claims under Clauses 17(1) and 17(2). A claim that an animal has failed to satisfy a guarantee of fertility under Clause 17(1) or 17(2) must be made to the Vendor within the relevant guarantee period but prior to the animal entering a quarantine area other than on the Vendor's property.
 - All claims must be accompanied by a certificate from a registered veterinarian surgeon in accordance with the guidelines established by the Australian Association of Cattle Veterinarians which must clearly identify the basis of the claim.
 - Subject to Clause 17(9), infertility resulting from injury or disease occurring after the sale of the animal is not covered by this guarantee.
 - The Vendor retains the right to have the animal placed on a property nominated by him or returned to his own property for further assessment of fertility for a period not exceeding six months. If the animal proves fertile within the period such status must be confirmed by a certificate issued by a registered veterinary surgeon in accordance with the guideline established by the Australian Association of Cattle Veterinarians and costs incurred must be borne by the Purchaser. If the animal is not proven fertile within the period, the costs incurred must be borne by the Vendor.
- LIABILITY OF A VENDOR** – Except for costs defined elsewhere in the conditions of sale, the liability of a Vendor in respect of claims relating to fertility shall not exceed the purchase price of the animal(s) or provide mutually agreed upon replacement animal(s).
- In the event of a claim being substantiated:
 - The purchase price shall be refunded within 14 days unless a mutually agreed upon replacement animal has been provided.
 - The animal/s which are the subject of the claim shall automatically become the property of the Vendor and be returned to him or disposed of according to his instruction at his expense.
- Subject to Clause 17(9), this guarantee is of no effect if:
 - The animal is returned to the Vendor.
 - In poor physical condition or with any injury;
 - Tests carried out on behalf of the Vendor within fourteen days of such return proved positive to any diseases which may affect the animal's fertility or ability to breed naturally; or
 - The Purchaser has collected and stored semen from a bull or
 - The Purchaser attempted any form of embryo collection from a female.
- In the event of a dispute as to whether a lot is a breeder, such dispute shall be resolved by the Vendor and the Purchaser. The Auctioneer, while he will use his best endeavours to assist, shall have no liability or responsibility in that regard. If an animal is alleged or proved not to be a breeder, the Purchaser must nevertheless pay the Auctioneer the full purchase price and any other monies or interest payable by the Purchaser in accordance with these Terms and Conditions.
- EVIDENCE OF FERTILITY** – A Certificate issued by a registered veterinary surgeon at or before the time of sale that an animal is fertile (unless it is a certificate stating in respect of a female that she is in calf at the time of sale) does not, of itself, satisfy or discharge the Vendor's obligations under the guarantee of fertility given under this Clause 17. All animals, except calves at foot, must prove their fertility within the relevant guarantee period.
- RELIEF FROM GUARANTEE** – If the Vendor seeks to be relieved from the obligations which would otherwise be imposed upon him by this clause by virtue of Clauses 17(3)(b) or 17(6)(a), the onus of proof is upon the Vendor to establish that:
 - The animal suffered the injury or disease or is in poor physical condition due to circumstances and events occurring after the sale, and
 - The injury, disease of physical condition is the sole cause of the animal's infertility or failure to prove fertility within the guarantee period.
- DEFINITION** – For the purpose of this Clause 17, the expression "guarantee period" means:
 - in relation to bulls – the period specified in Clause 17(1) as being the period in which the bull must prove his fertility; and
 - in relation to females – the period specified in Clause 17(2) as being the period in which the female must go into calf.
- Each lot shall be at the risk of the Vendor in respect of any damage or injury, whether by disease, accident or otherwise, or whether caused by the negligence of the Auctioneer for the period that the lot be in the custody of the Auctioneer, unless such lots shall have been sold in which latter case such lot shall be at the risk of the Purchaser in all such respects.
 - If any Vendor brings to the sale premises any lot which is dangerous, or infected with any disease, that Vendor shall be liable for all injury, damages, costs, losses or expenses which the Auctioneer may sustain, incur or be put to either directly or indirectly as a result of the Vendor so doing. The Auctioneer reserves the right, at its absolute discretion, to exclude from the sale, or put out of the sale venue or dispose of, any lot which in its opinion shows signs of any disease, whether infectious, contagious or not, or of any serious fault or of being dangerous.
- DELIVERY** — Except at the discretion of the Auctioneer no lot shall be delivered to the Purchaser unless payment of the purchase money together with any additional charges incurred including those expenses incurred by the Auctioneer pursuant to Condition 14 hereof, is first made by the Purchaser to the Auctioneer. Release of lots may be withheld by the Auctioneer until personal cheques are cleared.
- In these Conditions:—
 - References to "Auctioneer" shall be taken to mean as the context so admits, the Selling Agent or any member, subsidiary or related corporation or body, officer, agent or employee thereof, authorised by the Vendor to conduct the sale of the lot;
 - "Purchaser" shall have the meaning ascribed to it in Condition 1;
 - "Vendor" shall mean the person or corporation upon whose account lots are offered for sale and where a stud or farm is named shall mean the proprietor of that stud or farm;
 - "Lot" shall be taken to mean the animal offered for sale and/or sold by the Auctioneer on behalf of a Vendor.

IMPORTANT NOTICE

The Selling Agent, its members, subsidiary or related corporations, officers, agents, and employees for themselves and for those for whom they act while exercising due care provide all information without responsibility and give no guarantee whatsoever as to its accuracy.

All persons who attend the Sale do so entirely at their risk and the Selling Agent, its members, subsidiary or related corporations, officers, agents, employees and its principals, for themselves and for those for whom they act, do not assume or accept any responsibility or liability of whatever nature for any injury or damage whatsoever which may occur.



The 2022 Bimbadeen Sale saw a beautiful sunny day, great crowds and strong online support to record our best-ever results. Lot 1 bull Bimbadeen SAXON S55 took the top honours taking up stud duties with Ray Gross of Gromac Brangus. It was wonderful to see so many new and repeat buyers investing in Bimbadeen genetics - we hope to see you all back again this year!



FACEBOOK



WEBSITE

PHENOTYPE, FIGURES AND FERTILITY