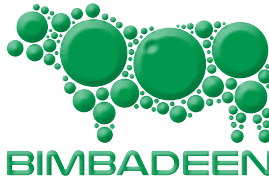


BRANGUS SEEDSTOCK YOU CAN COUNT ON



2025 GENETICS SALE

MONDAY, SEPTEMBER 15

OPEN & INSPECTION DAY - AUGUST 29
NEW LOCATION - 'JINDALEE', JAMBIN

54 BULLS
11 HEIFERS



OUR VISION

*Breeding Braugus seedstock with exceptional
paddock, breeding & commercial qualities*

OUR CUSTOMERS

'With the help of your dedication to genetics we have turned this place around.'
'He is very balanced, sound footed and quiet...a real cow-getter in the paddock.'
'He's got an outstanding 99% calving rate. Nice sappy calves.'
'We go to your sale because of the phenotype and the data.'
'Virility 100%... every heifer he was put with was pregnant.'
'Still sound and great footed at 7 years of age.'



2025 GENETICS SALE

MONDAY, SEPTEMBER 15

AT 'JINDALEE' VIA JAMBIN

INSPECTIONS FROM 9AM

SALE STARTS 1PM

ONLINE WITH STOCKLIVE*



BRANGUS SEEDSTOCK FOR YOUR BUSINESS

54 BULLS + 11 HEIFERS

The Salisbury family

Mark - 0427 141 919

Amanda - 0427 677 381

Jack - 0475 516 115

amanda@bimbadeenbrangus.com



Andrew Cavanagh - 0467 662 452

Brendan Kelly - 0400 997 289

Andrew Clark - 0409 170 393

*Instructions to bid online on page 12

bimbadeenbrangus.com

Welcome

We are excited to host two terrific events at a brand new venue and location this year - still offering the outstanding quality and value you expect at Bimbadeen...

2025 has truly been a year of development for us here at Bimbadeen - consolidating our breeding herd at our original properties at Upson Downs and Arthur's Knob, and using our Jambin blocks to grow out all of our male cattle from weaning onwards.

This change of gear is providing us with greater scope for developing our breeders and females as we build both stud and commercial herds. Our amazing Bimbadeen cow lines continue to flourish through our program, while we blend in some more Angus and low-content bloodlines to service the Ultrablack and flatback markets.

We have also maintained focus on our slicker, higher bos indicus content bloodlines with some spectacular results utilising home-bred bloodlines and tried-and-tested females purchased with these end-goals in mind.

Our son Jack has been working at our Jambin blocks at 'Jindalee' and 'Silverlea', producing hay and silage for our own pit and mixing the rations for our sale bulls.

This year's sale draft are showing enormous promise, with some great young Brangus bulls rising to the top of the catalogue draft and terrific types throughout - a credit to both the genetics selected and some great regular handling by Jack and the team.

This strong line of young sires of the future combine a great depth of Brangus breeding,



strong and stylish phenotype and excellent beef-making potential for their new herds.

As always, we make every effort to ensure fertility is assured with crushside motility and morphology assessments. DNA results have been shared along with EBVs in an updated info panel on each lot page.

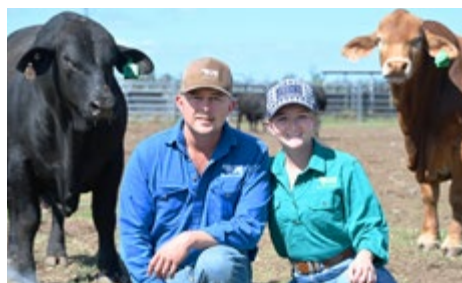
The keywords for the reference sires of the 2025 Bimbadeen sale draft are MASCULINITY, CARCASE TRAITS and LONGEVITY.

The truly remarkable Bimbadeen K300 (PP) (ET) proved his virility well into double figures, producing 8 sons and 3 daughters for this sale. This bull has never been fed or pampered (or had a decent photo taken of him) and worked in Bimbadeen's commercial and stud herds.

We retired Bimbadeen MEMPHIS (PP) after producing stud progeny for us for us til the ripe old age of ten. This will be his last drop of single-sire matings - despite his age, his 'strike rate' in his paddock always led season stats.

We have, of course, retained semen from him for future AI, IVF and ET work. His athletic build, strong masculine sire appeal and robust EBVs along with enduring fertility (and an unstoppable virility) are well worth bottling!

One of his sons is our gorgeous lot 2 bull, Bimbadeen VALENTINO V1 (PP) (above).



This year will see the last of our Palgrove NITRO N250 (PP) (AI) (UB) offspring - sharing in their sire's gangbusting growth and steer index EBVs and super tidy phenotype.

One of our retained Bimbadeen-bred sires, SORRENTO S170 (PP) worked in a multisire stud paddock and has stamped his lovely run of progeny with his slick skin, length, good weight EBVs & Australian-style Brangus 'look'.

Following strong interest last year, we have selected 11 gorgeous registered Brangus females - representing seven individual sire lines - for the 2025 Sale.

As this goes to print, we will be working hard getting our new sale complex at 'Jindalee' constructed - a much more accessible location for our clients and handy to where our bulls now run. A map showing the location and directions for Jindalee - where both the 'No Dumb Questions' Open Day and the 2025 Bimbadeen Genetics Sale will be held - can be found on page 5.

We will be hosting the Open Day/Zone 1 ABCA Field Day (a fortnight before the Sale) in a relaxed afternoon at Jindalee on August 29. This event brings four terrific industry experts together to answer questions you may have around the tests and measures we utilise within our catalogue. A full explanation can be found on p 4. This will also be a great opportunity to preview sale bulls and heifers.

We look forward to welcoming you to 'Jindalee' soon!

Mark & Amanda and family



Featuring sires...



Bimbadeen MEMPHIS (PP) (above)

It's hard to keep a good bull down and this super-sire has done it again. His phenotype has ensured his longevity as a mainstay sire with terrific strong structure, masculine polled head, athletic constitution, superb fertility and that vital quality, libido!

Memphis has 13 sons and 3 daughters in the 2025 Bimbadeen Genetics sale.



Bimbadeen SORRENTO S170 (PP)

(above) has been our 'dark horse' - kept from the S drop of bulls he offers very slick skin and athletic structure and was joined with some of our younger females with some great results.

Sorrento offers 7 sons and 1 daughter in this catalogue.

Once again special mention goes to our quiet achiever **Bimbadeen K300 (PP) (ET)** (Washington of Brinks 302S47 x MS Brinks Tracker 302R38) who has 6 sons & 2 daughters in the sale and worked to the ripe old age of 11!

'NO DUMB QUESTIONS' - Open Day

Hosted at 'Jindalee' in the lead-up to the 2025 Bimbadeen Genetics Sale, this event will bring together industry experts to help take the mystery out of seedstock catalogues - helping you understand all the info & how it helps your herd.

FRIDAY, AUGUST 29

We invite you to attend what should be an excellent and informative afternoon at our new sale complex at 'Jindalee'.

The 'No Dumb Questions' Open Day (Brangus Australia Zone 1 Field Day) kicks off at 1pm and will bring together some outstanding experts to provide down-to-earth explanations in layman's terms for seedstock measures such as BREEDPLAN EBVs, unravelling the mysteries of semen morphology and structural assessments for veterinarian 'Bull Check', as well as interpreting DNA results.



MEET OUR EXPERTS...

DR STACEY RAE - BVSC AUSTTM VET ASSOCIATION.
PRESIDENT, AUSTRALIAN CATTLE VETERINARIANS:

- ✓ BULLCHECK
- ✓ STRUCTURE
- ✓ SEMEN TESTS: CRUSHSIDE & MORPHOLOGY

CATROINA MILLEN - ABRI
ENGAGEMENT & EXTENSION TEAM LEADER, BREEDPLAN:

- ✓ EBVS
- ✓ GENETIC EVALUATION
- ✓ MEASURES & GENOMICS

HARRISON STEWART - NEOGEN
GENOMICS SPECIALIST FOR NORTHERN BEEF:

- ✓ GENOMICS
- ✓ DNA SAMPLING
- ✓ DNA TESTING

NATHAN O'SULLIVAN - BRANGUS AUSTRALIA
CEO, AUSTRALIAN BRANGUS CATTLE ASSOCIATION:

- ✓ ABCA REGISTRATIONS & ENROLMENTS
- ✓ ABCA MEMBERSHIPS
- ✓ BRANGUS ONLINE

Sandwiches, smoko and an early BBQ dinner will be provided. Everyone is welcome - whether you breed Brangus (yet) or not!

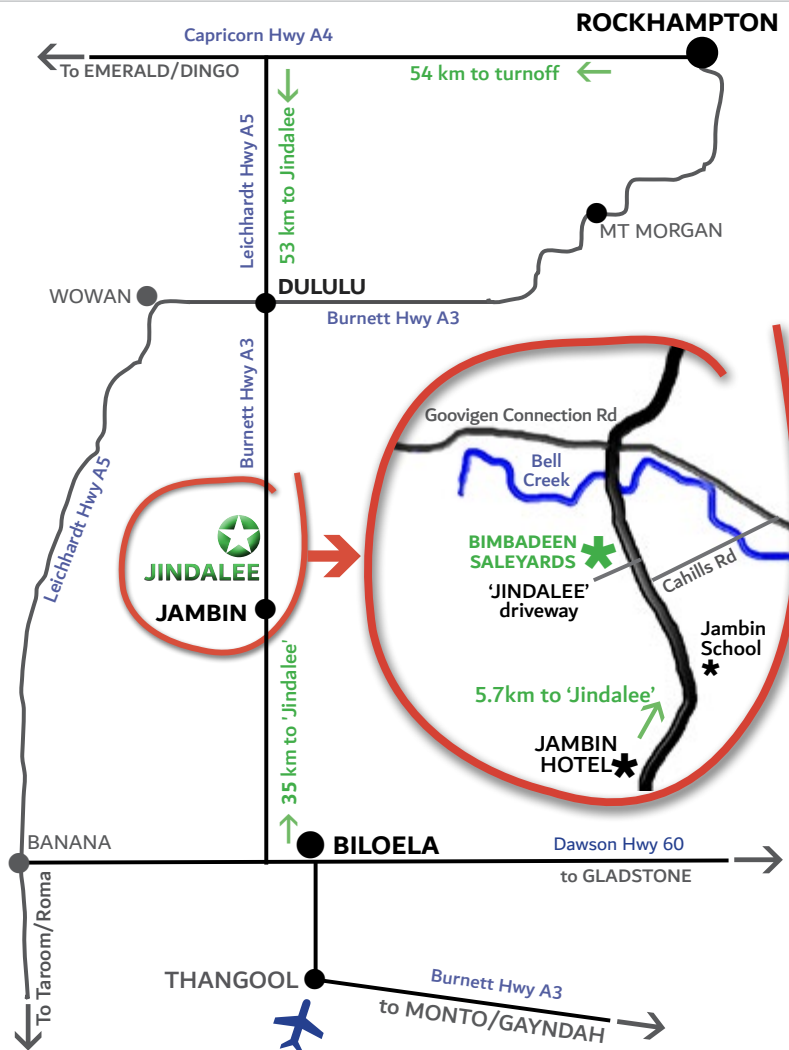
* 43931 Burnett Hwy, Jambin, QLD.

Directions

NEW SALE LOCATION - 'JINDALEE'

43931 BURNETT HWY, JAMBIN

Google Maps shows location incorrectly - follow map below



TRAVEL & ACCOMMODATION

If you need accommodation for either the Open Day or Sale, we recommend that you book early.

BILOELA

Silo Motor Inn 07 4992 5555
Hotel Settlers 07 4992 2933
Sun Valley Motel 07 4992 1281

JAMBIN

Jambin Hotel Motel 07 4992 5555

FLIGHTS

THANGOOL

LINK Airways 1300 851 269
www.linkairways.com

NEED A LIFT FROM THANGOOL AIRPORT?
Pre-arrange with us before sale day.

Sale Information

BIMBADEEN CONTACT INFO

m. 0427 141919 (Mark)
m. 0427 677381 (Amanda)
e. amanda@bimbadeenbrangus.com
w. bimbadeenbrangus.com
f. facebook.com/Bimbadeen

SALE AGENTS

KELCO RURAL AGENCIES

Andrew Cavagnah - 0467 662 452
Brendan Kelly - 0400 997 289
Andrew Clark - 0409 170 393

AUCTIONEER

We're delighted to once again have guest auctioneer Brian Wedemeyer working the microphone. Brian has provided his outstanding service for the past 7 on-property sales.

LOCATION

On-property at our new sale complex at 'Jindalee'. (See map & directions previous page). Smoko and lunch will be available. Prior inspections at the Open Day on August 29 and by appointment.

BULL PREPARATION

Sale bulls have been run in grass paddocks at our Jambin blocks and fed a silage mix designed to optimise health & performance.

HEALTH

All animals are visually vet inspected by Dr Stacey Rae (Monto Veterinary Group) and bulls will come with a BULL CHECK certificate. Where we observe any issues after inspection, we will note it in supplementary sheets.

VACCINATIONS

All bulls are vaccinated for Tick Fever, Vibrio, Botulism, 3-Day and treated twice with 5 in 1. Females are vaccinated for Tick Fever & 7-in-1.

FERTILITY

Dr Stacey Rae (Monto Veterinary Services) has crush-side tested, done scrotal measures. Beef Breeding Services have tested morphologies.

SUPPLEMENTARY SHEETS

Will be available online before sale day, with latest info (current weights, scan data & semen results) printed for buyers on sale day.

SALE DAY PHONE

There is mobile phone service and limited satellite wifi at the sale location. Stocklive will be on hand or contact our agents (top of page).

SEMEN RIGHTS

All bulls sell with 100% semen marketing rights. Bimbadeen reserves the right to collect up to 200 straws of semen from any bull in the Sale for use within our herd. Any semen collection would be at the vendor's expense and the purchaser's convenience. Bulls with semen retained have been noted on lot pages.*

ACCOMMODATION

Our new sale venue is just over an hour from Rockhampton, half an hour from Biloela and 5 minutes from Jambin. See page 5 for some motel recommendations and contacts.

OUTSIDE AGENT REBATE

A generous rebate of 4% commission will be paid to outside agents who:

- Register buyers *more than 24 hours before sale*
- Accompany a client to the sale; or attends the sale & purchase on a client's behalf;
- Must settle within 7 days.

BULK BUYER DISCOUNT

Buyers purchasing 7 or more bulls will be eligible for a 5% discount.

MOVEMENT OF ANIMALS

Cattle will be clean on sale day ready for immediate transport (with a tick inspector available on the day). All lots heading to clean country will be re-inspected for later deliveries.

DELIVERY

Bimbadeen will deliver (free of charge) purchased sale lots to major saleyards, where it fits with delivery runs in Queensland. We will assist with organising transport to other areas.

INSURANCE

All lots become the property of the buyer from the fall of the hammer - we highly recommend all buyers take out insurance immediately upon purchase. Please see Richard Reynolds of Achmea who will be in attendance, or arrange with your own insurance contact on sale day. (See **Buyers Instructions**, p73).



Bimbadeen has been identified as a 'Top Stud'

(Bush Agribusiness' Top Studs 2024-2025)

This recognises that Bimbadeen genetics, expressed through the maternal Breedplan indices, are in the top half of the breed. Across all studs in Australia, only 237 made this list: www.bushagri.com.au/topstuds



SALE DAY ETIQUETTE

We have designed our sale setup for maximum viewing opportunities - we recommend you do not enter the pens unnecessarily. Sale Day places extraordinary pressure on all animals - even the quietest bull can be unpredictable.

Never crowd the animals or loiter inside the pens and use common sense at all times.

Please call on any of the Kelco Agents or a Bimbadeen rep to stand up animals if required.

Please ensure you pick up the supplementary sheet - if you require further information on any animal, please ask Mark or Amanda.

Visitors enter the cattle pens at their own risk - children must not enter the yards.

GETTING YOUR NEW BULLS & HEIFERS SETTLED IN AT HOME

All sale animals will be leaving a familiar environment and mob, and will arrive to an unfamiliar situation at your property.

The truck ride can sometimes be challenging for a young animal, especially if they are travelling on their own. If you are not putting your new Bimbadeen bulls or females directly into a cow herd, it's a great technique to ensure they have company on arrival (with a couple of cows or steers waiting for them at your yards).

Our animals have been well handled with horses, dogs and ATVs, and on foot through yards. We treat our bulls (& females) with great respect and make a habit of handling them quietly - we recommend you do the same. Each animal has their own personality and response to pressure, but care has been taken in Bimbadeen's selection to ensure there are no general temperament issues.

Always ensure nutrition is sufficient to ensure females are cycling and bulls can hold condition reasonably, and your Bimbadeen investments should be producing for you in no time.

Keep us posted - we always look forward to hearing how Bimbadeen seedstock are working for their new owners.



BIMBADEEN V15 as a weaner with Mark.

EBVs Explained

GL - Gestation Length (days) is an estimate of the time from conception to the birth of the calf and is based on AI records. Lower (negative) GL EBVs indicate shorter gestation length and therefore easier calving and increased growth after birth.

BW - Birth Weight EBV (kg) is based on the measured birth weight of progeny, adjusted for dam age. The lower the value the lighter the calf at birth and the lower the likelihood of a difficult birth. This is particularly important when selecting sires for use over heifers.

200D - 200 Day Growth EBV (kg) is calculated from the weight of progeny taken between 80 and 300 days of age. Values are adjusted to 200 days and for age of dam. This EBV is the best single estimate of an animal's genetic merit for growth to early ages.

400D - 400 Day Weight EBV (kg) is calculated from the weight of progeny taken between 301 and 500 days of age, adjusted to 400 days and for age of dam. This EBV is the best single estimate of an animal's genetic merit for yearling weight.

600 - 600 Day Weight EBV (kg) is calculated from the weight of progeny taken between 501 and 900 days of age, adjusted to 600 days and for age of dam. This EBV is the best single estimate of an animal's genetic merit for growth beyond yearling age.

MCWT - Mature Cow Weight EBV (kg) is based on the cow weight when the calf is weighed for weaning, adjusted to 5 years of age. This EBV is an estimate of the genetic difference in cow weight at 5 years of age and is an indicator of growth at later ages and potential feed maintenance requirements of the females in the breeding herd. Smaller, or more moderate EBVs are generally more favourable.

The Mature Cow Weight EBV may also be used by steer breeders wishing to grow animals out to a larger weight.

BIMBADEEN DATA

We collect the following raw data for our own purposes and for BREED-PLAN submissions:

- weaning weights
- 200, 400 and 600 day weights
- scrotal sizes
- scans

Our breeders run in fairly rugged terrain in our granite country - we do not collect birth weights, with all cows & heifers expected to calve naturally in their breeding paddocks. It is very rare for us to have to assist a birth (and we will note where this occurs).

We have highlighted (bold) the traits in the 'lot info panels' which have been measured in our program.

EBVS shown are from JULY 2025 run.

MILK - Milk EBV (kg) is an estimate of an animal's milking ability. For sires, this EBV indicates the effect of the daughter's milking ability, inherited from the sire, on the 200 and 400 day weights of her calves. For dams, it indicates her own milking ability.

SS - Scrotal Size EBV (cm) is calculated from the circumference of the scrotum, measured in centimetres and adjusted to 400 days of age. This EBV is an estimate of a sire's genetic merit for scrotal size and is positively correlated to age of puberty in female progeny.

Days to Calving (days) This EBV indicates the fertility of the daughters of the sire. It is the time interval between the date when the female is first exposed to a bull in a paddock mating to the day when she subsequently calves.

A negative EBV for days to calving indicates a shorter interval from bull-in date to calving and therefore higher fertility.

CWT - Carcase Weight EBV (kg) is based on abattoir carcase records and is an indicator of the genetic differences in carcase weight at the standard age of 650 days.

Eye Muscle Area EBV (sq cm) is calculated from measurements from live animal ultrasound scans and from abattoir carcase data, adjusted to a standard 300 kg carcase. This EBV estimates genetic differences in eye muscle area at the 12/13th rib site of a 300 kg dressed carcase. More positive EBVs indicate better muscling on animals. Sires with relatively higher EMA EBVs are expected to produce better muscled and higher percentage yielding progeny at the same carcase weight than will sires with lower EMA EBVs.

Rib Fat and Rump Fat EBVs (mm) are calculated from measurements of subcutaneous fat depth at the 12/13 rib site and the P8 rump site (from live animal ultrasound scans and from abattoir carcasses) and are adjusted to a standard 300 kg carcase. These EBVs

are indicators of the genetic differences in fat distribution on a standard 300 kg carcase. Sires with low, or negative, fat EBVs are expected to produce leaner progeny at any particular carcase weight than will sires with higher EBVs.

Retail Beef Yield EBV (%) indicates genetic differences between animals for retail yield percentage in a standard 300 kg carcase. Sires with larger EBVs are expected to produce progeny with higher yielding carcasses.

Intramuscular Fat EBV (%) is an estimate of the genetic difference in the percentage of intra-muscular fat at the 12/13th rib site in a 300kg carcase. Depending on market targets, larger more positive values are generally more favourable.

Breed Values

JULY 2025 BREEDPLAN RUN

BRANGUS BREEDPLAN - PERCENTILE BANDS FOR 2023 BORN CALVES																
Ranking (Top %)	BIRTH		GROWTH					FERT	CARCASE					INDEXES		
	Gest. Length (days)	Birth Wt. (kg)	200 Day Wt. (kg)	400 Day Wt. (kg)	600 Day Wt. (kg)	Mat Cow Wt. (kg)	Milk (kg)	Scrotal Size (cm)	Carcase Wt. (kg)	EMA (sq cm)	Rib Fat (mm)	Rump Fat (mm)	Retail Beef Yield (%)	IMF (%)	Export Steer (\$)	Domestic Steer (\$)
TOP VALUE	-6.3	-5.0	+43	+73	+90	+100	+8	+4.9	+40	+6.1	+4.7	+6.0	+2.6	+1.7	+67	+69
1%	-4.7	-2.9	+31	+54	+65	+70	+5	+3.2	+31	+4.0	+2.5	+3.1	+1.9	+1.1	+47	+51
5%	-3.5	-2.0	+25	+44	+52	+53	+3	+2.5	+25	+3.1	+1.6	+2.0	+1.4	+0.9	+39	+42
10%	-2.7	-1.5	+22	+39	+45	+45	+2	+2.1	+22	+2.7	+1.2	+1.5	+1.2	+0.7	+35	+37
15%	-2.3	-1.3	+20	+36	+41	+40	+1	+1.9	+20	+2.4	+1.0	+1.2	+1.0	+0.6	+32	+34
20%	-1.9	-1.0	+18	+33	+37	+36	+0	+1.7	+19	+2.2	+0.8	+1.0	+0.9	+0.6	+30	+31
25%	-1.6	-0.8	+17	+30	+33	+33	+0	+1.5	+17	+2.0	+0.7	+0.8	+0.8	+0.5	+28	+29
30%	-1.4	-0.6	+15	+28	+31	+30	+0	+1.3	+16	+1.9	+0.6	+0.7	+0.7	+0.5	+26	+28
35%	-1.2	-0.5	+14	+26	+29	+27	-1	+1.1	+15	+1.7	+0.5	+0.5	+0.6	+0.4	+24	+26
40%	-1.0	-0.3	+13	+25	+27	+25	-1	+0.9	+15	+1.6	+0.4	+0.4	+0.5	+0.4	+23	+25
45%	-0.8	-0.1	+12	+23	+24	+22	-2	+0.7	+14	+1.5	+0.3	+0.3	+0.5	+0.3	+22	+23
50%	-0.6	+0.0	+11	+21	+22	+20	-2	+0.6	+13	+1.3	+0.2	+0.2	+0.4	+0.3	+21	+22
55%	-0.5	+0.2	+10	+20	+21	+18	-2	+0.5	+12	+1.2	+0.1	+0.0	+0.3	+0.3	+19	+21
60%	-0.4	+0.4	+9	+18	+19	+16	-3	+0.3	+11	+1.1	+0.0	-0.1	+0.3	+0.2	+18	+19
65%	-0.2	+0.6	+8	+17	+17	+14	-3	+0.2	+10	+0.9	-0.1	-0.2	+0.2	+0.2	+17	+18
70%	-0.1	+0.8	+7	+15	+15	+11	-3	+0.0	+9	+0.8	-0.3	-0.4	+0.2	+0.1	+15	+17
75%	+0.1	+1.0	+6	+13	+13	+9	-4	-0.1	+8	+0.6	-0.4	-0.6	+0.1	+0.1	+14	+15
80%	+0.2	+1.3	+4	+11	+10	+6	-4	-0.3	+7	+0.4	-0.5	-0.7	+0.0	+0.0	+12	+13
85%	+0.4	+1.5	+3	+9	+7	+2	-5	-0.5	+6	+0.2	-0.7	-0.9	-0.1	+0.0	+11	+11
90%	+0.6	+2.0	+1	+7	+4	-2	-6	-0.7	+5	+0.0	-0.9	-1.2	-0.3	-0.1	+9	+9
95%	+0.9	+2.6	-1	+3	-1	-8	-7	-1.1	+2	-0.4	-1.3	-1.7	-0.5	-0.2	+5	+6
99%	+1.7	+3.8	-5	-4	-9	-21	-9	-1.8	-2	-1.4	-1.9	-2.6	-1.0	-0.5	+0	-1
LOW VALUE	+2.8	+5.9	-11	-15	-23	-45	-12	-3.4	-9	-2.6	-3.1	-3.9	-2.8	-1.0	-10	-11

Genetic tests

All Bimbadeen sale lots have had the 'Brangus Bundle' DNA testing for the 2024 sale - this involves testing samples for the POLL gene, COAT COLOUR gene & PARENT verification*.

COAT

ED/ED Homozygous dominant black
ED/e Dominant black/recessive red
ED/ E+ Dominant black/wildtype
E+/e Wildtype/recessive red
E+/ E+ Homozygous wildtype
e/e Homozygous recessive red

PARENT VERIFICATION

Each animal's unique genetic fingerprint is evaluated against the fingerprint of its expected parents. Multiple 'possible' sires can be nominated for each animal with matches confirmed or ruled out after analysis.
Marked **VS** (Verified to Sire) or **VP** (Verified to Parents) in catalogue lot pages.

POLL

When reporting Poll test results from a SNP based test, the results will be reported as below:

Result	Interpretation	Animal's Appearance
PcPc	Homozygous Poll (PP)	Predominately Polled (occasional scurs)
PcPf		
PfPf		
HPc	Heterozygous Poll (PH)	Polled or Scurred
HPf		
HH	Horned (HH)	Horned

Mating outcomes (statistically): Pc and Pf are interchangeable for 'P' in the graphic below.

	P	P	PP x PP 100% progeny will be PP polled		P	P	PP x HH 100% progeny will be PH polled
P	PP	PP		H	PH	PH	
P	PP	PP		H	PH	PH	
	P	P	PP x PH 50% progeny will be PP polled, 50% will be PH polled		P	H	PH x PH 50% progeny will be PH polled, 25% will be PP polled, 25% will be HH horned
P	PP	PP		P	PP	PH	
H	PH	PH		H	PH	HH	
	P	H	PH x HH 50% progeny will be PH polled, 50% will be HH horned		H	H	HH x HH 100% progeny will be HH horned
H	PH	HH		H	HH	HH	
H	PH	HH		H	HH	HH	

*A NOTE ABOUT TENDERNESS MARKERS

Current tests for the Brangus Bundle include the 'Tenderness' marker - while we focus on many measures for meat quality (including IMF) we understand that this particular test offers a less reliable reflection of this quality than other DNA markers (above). If you are interested in the Tenderness results, they are published online with the ABCA.



DNA SAMPLES TAKEN WITH TISSUE SAMPLING UNITS (TSUs), READY TO SEND TO NEOGEN FOR 'BRANGUS BUNDLE' PROCESSING

Why BUY BIMBADEEN?

We have been breeding Brangus seed-stock for the Australian market for more than seven decades.

Since Mark and Amanda have been involved at Bimbadeen full-time (20 years), we have consistently collected data and taken DNA from our stud & sale mobs.

We always assess phenotype as a priority and then bring in our data to help select bloodlines accordingly.

While DNA, EBVs, semen results and data can be excellent marketing tools, we believe in using them for our own assessment purposes first and foremost. They assist us to select the 'best of our best' for the Bimbadeen program & our clients.

We take great pride in seeing Bimbadeen animals go on to produce (for our stud and commercial customers) progeny that sell on for far more than initial investment in their sire or dam. That's what we call real 'value for money'.

LOT PAGE INFO PANELS

'DAM'S HISTORY' KEY:
c = commercial s = steer f = heifer F = sale heifer m = bull M = sale bull **bold** = current lot

SEMEN TESTS
Semen testing includes crushside (motility) and lab (morphology) tests. All bulls have passed with general results indicated in this catalogue in sidebars.

Motility: ✔ for pass (>60%).
Morphology: ✔ for single sire (>70%) and **Q** for Qualified (50-70%).

HOW TO REGISTER with



Follow these easy steps to start bidding:



Visit www.stocklive.com.au using your desktop, laptop, iPad, iPhone or Android device. NO App required.



Select the **bid** icon beside the sale you wish to bid on.



If you're new, select **register**, and complete the form with all your details, **accept sale conditions**, select **create bidder registration**.



You will receive an email from StockLive. Select "**Confirm my bidding account**" to set your password and **accept Bidder Account Terms & Conditions** and Privacy Policy followed by **create my account**.



Congratulations! Your StockLive account has been created and your bid request is pending. You will be notified via email when your request to bid has been approved.



Existing users, follow steps 1 & 2, select login, enter your details followed by the **request to bid** icon beside the sale you wish to bid on and then **accept** the terms.



On Sale Day, follow steps 1 & 2, select **enter auction** to watch, listen and purchase when the sale is flashing **LIVE**.



Invoicing and delivery will be carried out as per your registration details by the respective Selling Agents.



1300 259 742

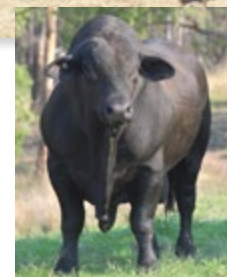
support@stocklive.com.au

www.stocklive.com.au



StockLive ABN 26 621 233 805
Level 12, 1 Eagle Street, Brisbane, QLD 4000

Reference SIREs



BIMBADEEN MEMPHIS (PP)

This super-stylish Bimbadeen bull was naturally bred from our two most influential bloodlines - out of our super-cow Bimbadeen D0135 (PP) by the great Oaklands Ambassador (PP)(ET).

We love his calm nature, superior structure, athletic movement, virile outlook, work ethic and his sheer Brangus sire appeal.

He offers consistently impressive EBVs across growth, fertility and carcase traits - top 1% scrotal size, 200dw top 4%, 400dw top 15%, 600dw top 20%, SS top 1%, fats top 15% & IMF top 5%.

DNA: PcPc, ED/ED

Memphis is also an AI sire (via Bimbadeen)

Photo (top): 3 years of age, show condition.

Photo (left): 6 years of age, paddock condition.

CATALOGUE: 13 sons & 3 daughters



GINOONDAN DRUMMOND (PP)

Drummond is super-fleshy bull selected at the 2022 Rocky ABCA Sale, by Bimbadeen Maverick. Selected for his easy-doing, masculine phenotype, super tidy underline and strong Brangus head, we are pleased to see his offspring exhibiting similar traits. Breedplan results indicate low birthweight and great fats.

DNA: PcPc, ED/ED

Photo: 2 years of age

CATALOGUE: 5 sons & 2 daughters



BIMBADEEN SORRENTO S170 (PP)

A bull retained from our S drop, with terrific stretch and skin. By Bimbadeen Litchfield (PP) (ET) (all Brinks breeding) and out of super-producer Bimbadeen H114 (11 consecutive registered calves) SORRENTO was used in a multisire paddock with younger females and has thrown some great style in his progeny. Reflecting strong 600dw and scrotal size measures in his EBVs.

DNA: PcPc, ED/ED

Photo: 2 years of age

CATALOGUE: 7 sons & 1 daughter

Reference SIREs cont'



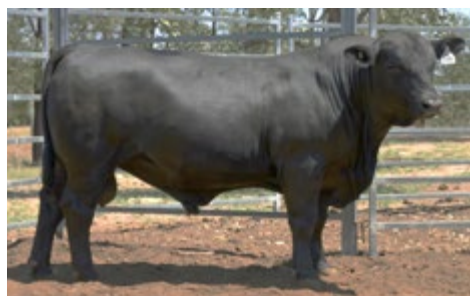
BIMBADEEN K300 (PP) (ET)

An embryo calf born at Bimbaddeen, (Washington of Brinks 302S47 x MS Brinks Tracker 302R38) K300 served in our commercial females in his early career before working our stud paddocks in his twilight. This remarkable bull showed terrific constitution through tough seasons in his unpampered life - still sound & working at 11 years of age. His EBVs remain strong for weights (top 15% 200dw), top 15% EMA & top 2% RBY.

DNA: PcPc, ED/ED

Photo: 11 years of age (after a season's work)

CATALOGUE: 6 sons & 2 daughters



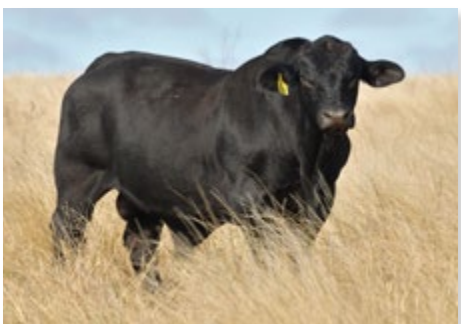
PALGROVE NITRO N250 (PP) (AI) (UB)

NITRO is another bull who has served in both stud and commercial breeding paddocks with great results. Purchased in 2019, his growth EBVs are phenomenal - top 1% GL, top 5-10% weights, top 2% milk, top 9% SS, top 20% RBY, top 7% steer indexes.

DNA: PcPc, ED/ED

Photo: 2 years of age

CATALOGUE: 4 sons & 1 daughter



TRIPLE B NOBLE N450 (PP)

The top priced bull at the 2019 Triple B sale, NOBLE has produced some very stylish progeny over the years at Bimbaddeen. His pedigree reveals the strong influence of Suhr's Next Step & Brinks (Czonka & Bright Side 607L11) with his maternal grand dam showcasing Australian heritage. He offers good GL, birthweight & 400 day weight EBVs, top 15% scrotal size (fertility).

Photo: 7 years of age.

CATALOGUE: 4 sons & 1 daughter



BIMBADEEN QANTAS Q137 (PP)

Boasting phenomenal growth and a superb temperament with enormous bone and capacity, QANTAS has produced some thumping calves in his time as a sire at Bimbaddeen. His BREEDPLAN figures show him in the top 5% for 600dw, top 15% milk and top 6% carcass weight, top 15% yield and top 30% IMF.

Photo: 5 years of age.

CATALOGUE: 3 sons

Reference SIREs - DAM lines

OAKLANDS AMBASSADOR (PP) (ET)

Ambassador undoubtedly put his stamp on the Bimbaddeen stud herd. Purchased in 2014 as a two-year-old, he worked across various stud paddocks for 7 years. His structural soundness, fertility and style are hallmarks of his progeny, and his females continue to place these stamps on their calves. Top 9% RBY, top 15% 200dw, top 20% milk, top 20% SS, top 20% EMA.

(PcPc, ED/ED)

Photo: 2.5 years of age



TELPARA HILLS MUNDINE 820J2 (PP) (AI)

Mundine began work at Bimbaddeen in 2016 and has provided a strong influence on some of our cow herd, producing lovely, framey females. His progeny have confirmed strong weight & carcass traits: top 6% carcass weight, top 6% RBY, top 10% for 200 & 600dw, top 15% EMA, top 20% milk and GL.

(PcPc, ED/ED)

Photo: 2 years of age



DOONSIDE IRA HAYES (PP) (AI)

One of Mark & Amanda's earliest sire selections for Bimbaddeen, IRA's impact on our breeding program has been definitive & lasting. Purchased as top price bull at the 2009 Doonside Sale, this Transformer of Brinks (ET) son had an athletic build, terrific skin, superb underline and wonderful nature. His EBVs have held up strongly since his first progeny hit the ground 15 years ago (top 10% CW & EMA).

Photo: 2.5 years of age



BIMBADEEN GRAPHITE

Graphite was an absolute gem of a bull - super easy doing and exceptionally easy-going. He features in many photos of our kids growing up. Graphite was promoted from our commercial herd for his exceptional phenotype and nature. EBVs hold for fertility and fats & indicate easy calving.

Photo: 2 years of age



Bimbadeen DAMS

Fertile & feminine, producing in all seasons...



A few of our amazing dams. All females shown in natural paddock condition, running on granite country, most shown with their 'V drop' calves at foot. All have produced calves annually with dams up to 13 years of age.



BIMBADEEN Q278 - DAM OF LOT 1 (V50)



BIMBADEEN Q142 - DAM OF LOT 4 (V15)



BIMBADEEN N117 - DAM OF LOT 14 (V2)



BIMBADEEN J69 - DAM OF LOT 17 (V10)



BIMBADEEN Q57 - DAM OF LOT 8 (V69)



BIMBADEEN N142 - DAM OF LOT 10 (V12)



BIMBADEEN M48 - DAM OF LOT 20 (V21)



BIMBADEEN M216 (ET)
- DAM OF LOT 3 (V66)



BIMBADEEN Q110 - DAM OF LOT 23 (V58)



BIMBADEEN Q76 - DAM OF LOT 38 (V72)



BIMBADEEN Q156 - DAM OF LOT 5 (V55)

2025



LOT 51 - BIMBADEEN VALERO V336

BULLS



LOT 10 - BIMBADEEN VAN HALEN V12



Bimbadeen

VERVE V050 (PP)

LEAD GUN OF BRINKS 222K14 (P)
CSONKA OF BRINKS 30R4 (PP)

S. **PALGROVE NITRO N250 (U) (PP) (AI)**
W C C SPECIAL DESIGN L309 (P)

STONE POINT YANKEE QUEEN B121 (P)
STONE POINT YANKEE QUEEN Y33 (P)

SINGLETARY OF BRINKS 675R (PP)
BIMBADEEN Q LITCHFIELD L12 (PP) (ET)

D. **BIMBADEEN Q278 (P)**
TELPARA HILLS MISS SUNDANCE 541D6 (P)(ET)

BRANGUS COW (P)

VERVE is a lovely square young bull with a beautiful sire's head, great structure, fantastic length and excellent nature. EBVs show big weights & milk potential. By Palgrove Nitro N250 (U)(PP). Displayed at Beef 2024.

VIDEO LINK DAM'S HISTORY: c c (ENROLLED) M M



PURCHASER:

\$

1 REGISTERED

Ident. BIM23FV050
DOB. 9/10/2023
% BI. 31.3
Gens.

ABCA	TRAIT	EBV	TOP%
	GL	-3.4	6%
	BW	0.3	60%
	200D	22	10%
	400D	40	9%
	600D	43	15%
	MCW	39	20%
	Milk	2	6%
	SS	1.6	25%
	CW	22	10%
	EMA	0.6	75%
	RIB	-0.7	85%
	RUMP	-0.8	85%
	RBY	0.5	40%
	IMF	0.2	60%

BREEDPLAN EBVs	STEER INDEX	EXP	DOM
		\$38	6%
		\$38	9%

SEMEN	MOTILITY	MORPH
	✓	✓
DNA	PV VS	POLL PcPc
	COAT ED/ED	



Bimbadeen

VALENTINO V001 (PP)

CSONKA OF BRINKS 30R4 (PP)
OAKLANDS AMBASSADOR (PP) (ET)

S. **BIMBADEEN Q MEMPHIS (PP)**
MISS BRINKS SUNDANCE 392L (P)

DOONSIDE BB176-01 (P) (AI)
BIMBADEEN Q D0135 (PP)

RUSHTON CSOKA'S FORTUNE (P) (ET)
BIMBADEEN Q KOSCIUSZKO (PP)

D. **BIMBADEEN Q N145 (P)**
BIMBADEEN Q G173 (P)

DOONSIDE DR MOK (S)
BIMBADEEN Q J173 (P)

BIMBADEEN Q P063 (P)

STYLE TO BURN. VALENTINO has been eye-catching from birth - superb slick skin, terrific Brangus head, tremendous shape & movement. EBVs show strong weights & excellent fats. Offers bone & sire appeal.

**Semen retained*

VIDEO LINK DAM'S HISTORY: f f M M M m



PURCHASER:

\$

2 REGISTERED

Ident. BIM23RV001
DOB. 25/09/2023
% BI. 45.2
Gens. 2

ABCA	TRAIT	EBV	TOP%
	GL	-0.6	50%
	BW	2.8	97%
	200D	24	6%
	400D	31	25%
	600D	33	25%
	MCW	23	45%
	Milk	-1	35%
	SS	2.2	9%
	CW	13	50%
	EMA	-0.6	96%
	RIB	1.1	15%
	RUMP	1.4	15%
	RBY	-0.7	98%
	IMF	0.6	15%

BREEDPLAN EBVs	STEER INDEX	EXP	DOM
		\$18	60%
		\$18	65%

SEMEN	MOTILITY	MORPH
	✓	✓
DNA	PV VS	POLL PcPc
	COAT ED/ED	



Bimbadeen VELODROME V066 (PP)

LEAD GUN OF BRINKS 222K14 (P)
WASHINGTON OF BRINKS 302S47 (P)
 MS BRINKS BRIGHT SIDE 302L9 (P)
 S. **BIMBADEEN K300 (PP) (ET)**
 TRACKER OF BRINKS 541M8 (P) (AI)
MS BRINKS TRACKER 302R38 (P)
 MISS BRINKS CHALLENGER 302G3 (P) (AI)

BURTIN'S TRANSFORMER 803G3 (P)
SUHN'S NEXT STEP 331R7 (P)
 SUHN'S MS CADENCE 331M3 (P)
 D. **BIMBADEEN Q M216 (P) (ET)**
 CSONKA OF BRINKS 30R4 (PP)
TELPARA HILLS MISS CSONKA 541H (P) (ET)
 MS BRINKS DITKA 541S7 (S) (ET)

SO THICK. A super sappy calf from birth - VELODROME is an absolute meat machine from every single angle. Needs to be seen in the flesh. EBVs show great GL, weights, fertility, yield & EMA.

*Semen retained

VIDEO LINK DAM'S HISTORY: m c f f f M f



PURCHASER:

\$

3
REGISTERED

Ident. BIM23RV066
 DOB. 16/10/2023
 % BI. 37.5
 Gens. 5

ABCA	TRAIT	EBV	TOP%
	GL	-2.4	15%
	BW	1.1	80%
	200D	22	10%
	400D	37	15%
	600D	37	20%
	MCW	32	30%
	Milk	0	20%
	SS	2.3	7%
	CW	20	15%
	EMA	2	25%
	RIB	-1.5	97%
	RUMP	-1.8	96%
	RBV	1.5	4%
	IMF	-0.1	90%

BREEDPLAN EBVs	STEER INDEX
	EXP \$36 8%
	DOM \$36 15%

SEMEN	MOTILITY	MORPH
	✓	✓
DNA	PV VS	POLL PcPc
	COAT ED/E+	



Bimbadeen VOYAGER V015 (PP)

CSONKA OF BRINKS 30R4 (PP)
OAKLANDS AMBASSADOR (PP) (ET)
 MISS BRINKS SUNDANCE 392L (P)
 S. **BIMBADEEN Q MEMPHIS (PP)**
 DOONSIDE BB176-01 (P) (AI)
BIMBADEEN Q D0135 (PP)
 BIMBADEEN Q P033 (P)

OAKLANDS AMBASSADOR (PP) (ET)
BIMBADEEN Q MANLY (PP)
 BIMBADEEN Q D56 (P)
 D. **BIMBADEEN Q Q0142 (PP)**
 BONOX 505 (P)
BIMBADEEN Q L91 (P)
 BIMBADEEN Q G159 (P)

This bull CANNOT take a bad photo. Just a really lovely young Brangus type with easy balance and that unbeatable Memphis head. Superb underline, outstanding semen & EBVs back him right up. Good nature.

VIDEO LINK DAM'S HISTORY: c c m M f



PURCHASER:

\$

4
REGISTERED

Ident. BIM23RV015
 DOB. 11/12/2023
 % BI. 43.9
 Gens. 2

ABCA	TRAIT	EBV	TOP%
	GL	-1.6	25%
	BW	3	97%
	200D	25	5%
	400D	38	15%
	600D	47	8%
	MCW	45	10%
	Milk	-1	35%
	SS	2.6	4%
	CW	20	15%
	EMA	2.2	20%
	RIB	0.5	35%
	RUMP	0.6	35%
	RBV	0.6	35%
	IMF	0.5	25%

BREEDPLAN EBVs	STEER INDEX
	EXP \$32 15%
	DOM \$36 15%

SEMEN	MOTILITY	MORPH
	✓	✓
DNA	PV PV	POLL PcPc
	COAT ED/e	



Bimbadeen

VALHALLA V055 (PP)

CSONKA OF BRINKS 30R4 (PP)
TELPARA HILLS MUNDINE 820J2 (PP) (AI)
 TELPARA HILLS MISS L11 820D4 (PP)
 S. **BIMBADEEN Q QANTAS Q137 (PP)**
 SUHN'S NEXT STEP 331R7 (P)
BIMBADEEN Q M138 (P) (ET)
 TELPARA HILLS MISS CSOKA 541H (P) (ET)

CSOKA OF BRINKS 30R4 (PP)
TELPARA HILLS MUNDINE 820J2 (PP) (AI)
 TELPARA HILLS MISS L11 820D4 (PP)
 D. **BIMBADEEN Q Q156 (PP)**
 DOONSDR DR MOK (S)
BIMBADEEN Q H201 (P)
 BIMBADEEN Q R415 (P)

A home favourite - VALHALLA echoes his super-frame sire QANTAS & matches his incredible temperament. Thickset with fantastic bone, neat underline, great flank. HUGE weight EBVs. Dam is in our donor program.

VIDEO LINK DAM'S HISTORY: m s s M (et prog)



PURCHASER:

\$

5
REGISTERED

Ident. BIM23RV055
 DOB. 2/11/2023
 % BI. 41.0
 Gens. 4

ABCA	TRAIT	EBV	TOP%
	GL	-0.2	65%
	BW	4.7	99%
	200D	31	1%
	400D	47	4%
	600D	64	2%
	MCW	70	1%
	Milk	1	15%
	SS	-0.4	85%
	CW	29	2%
	EMA	1.5	45%
	RIB	-1	91%
	RUMP	-1.3	91%
	RBV	1	15%
	IMF	0.5	25%

BREEDPLAN EBVs
 STEER INDEX
 EXP \$24 35%
 DOM \$27 35%

SEMEN MOTILITY MORPH
 ✓ ✓
 DNA PV PV
 POLL PcPc
 COAT ED/ED



Bimbadeen

VITTORIO V148 (PP)

OAKLANDS AMBASSADOR (PP) (ET)
BIMBADEEN Q MAVERICK (PP)
 BIMBADEEN Q R22 (PP)
 S. **GINOONDAN DRUMMOND (PP)**
 GINOONDAN KINSEY 175 (P)
GINOONDAN 264 (P)
 GINOONDAN 153 (P)

CSOKA OF BRINKS 30R4 (PP)
OAKLANDS AMBASSADOR (PP) (ET)
 MISS BRINKS SUNDANCE 392L (P)
 D. **BIMBADEEN Q P42 (PP)**
 GREENDALE URANIA (P)
BIMBADEEN Q D185 (P)
 BIMBADEEN Q K290 (P)

The first Drummond son of the sale with plenty of sire appeal. We love the fluid athletic movement of VITTORIO, along with his early finishing traits, with EBVs predicting excellent fats & IMF.

VIDEO LINK DAM'S HISTORY: m m m M m



PURCHASER:

\$

6
REGISTERED

Ident. BIM23RV148
 DOB. 23/10/2023
 % BI. 47.4
 Gens. 3

ABCA	TRAIT	EBV	TOP%
	GL	-0.2	65%
	BW	1.2	80%
	200D	14	35%
	400D	18	60%
	600D	17	65%
	MCW	14	65%
	Milk	1	15%
	SS	0	70%
	CW	9	70%
	EMA	0.9	65%
	RIB	1.3	9%
	RUMP	1.6	9%
	RBV	-0.2	90%
	IMF	0.6	15%

BREEDPLAN EBVs
 STEER INDEX
 EXP \$13 80%
 DOM \$13 80%

SEMEN MOTILITY MORPH
 ✓ ✓
 DNA PV PV
 POLL PcPc
 COAT ED/ED



Bimbadeen

VORTEC V8 (PP)

CSONKA OF BRINKS 30R4 (PP)
OAKLANDS AMBASSADOR (PP) (ET)
 MISS BRINKS SUNDANCE 392L (P)
 S. **BIMBADEEN Q MEMPHIS (PP)**
 DOONSIDE BB176-01 (P) (AI)
BIMBADEEN Q D0135 (PP)
 BIMBADEEN Q P033 (P)

TRANSFORMER OF BRINKS (P) (ET)
DOONSIDE IRA HAYES (P) (AI)
 DOONSIDE BB 3704-04 (P)

D. **BIMBADEEN Q L119 (P)**
 BIMBADEEN Q H139 (P)
BIMBADEEN Q L207 (P)
 BIMBADEEN Q G202 (P)

VORTEC V8 offers the kind of serious grunt that his maternal grandsire (Doonside Ira Hayes) brought. Great length and bone with outstanding weights & fat EBVs (top 7% rib/rump, top 6% IMF).

VIDEO LINK **DAM'S HISTORY:** F m f f M f M



PURCHASER:

\$

7
REGISTERED

Ident. BIM23RV008
 DOB. 25/09/2023
 % BI. 47.2
 Gens. 2

	GL	EBV	TOP%
GL	-1.9	20%	
BW	0.5	65%	
200D	24	6%	
400D	38	15%	
600D	40	20%	
MCW	43	15%	
Milk	0	20%	
SS	0.9	40%	
CW	21	15%	
EMA	0.2	85%	
RIB	1.4	7%	
RUMP	1.8	7%	
RBV	-0.6	96%	
IMF	0.8	6%	

STEER INDEX
 EXP \$34 15%
 DOM \$33 20%

SEMEN MOTILITY MORPH
 ✓ ✓

DNA PV VS
 POLL PcPc
 COAT ED/ED



Bimbadeen

VAN DAMME V069 (P)

OAKLANDS AMBASSADOR (PP) (ET)
BIMBADEEN Q MAVERICK (PP)
 BIMBADEEN Q R22 (PP)
 S. **GINOONDAN DRUMMOND (PP)**
 GINOONDAN KINSEY 175 (P)
GINOONDAN 264 (P)
 GINOONDAN 153 (P)

RUSHTON CSONKA'S FORTUNE (P) (ET)
BIMBADEEN Q KOSCIUSZKO (PP)
 BIMBADEEN Q G173 (P)

D. **BIMBADEEN Q Q57 (P)**
 MC X FACTOR 889X34 (P)
TELPARA HILLS MISS X-FACTOR 146K (P) (ET)
 TELPARA HILLS MISS L11 146C4 (P) (ET)

Superbly muscled with an immaculate underline, this Drummond son offers to add a great hindquarter and shape to your herd. EBVs predict great fats and early finishing traits.

VIDEO LINK **DAM'S HISTORY:** f, f, M, f



PURCHASER:

\$

8
REGISTERED

Ident. BIM23RV069
 DOB. 30/10/2023
 % BI. 44.4
 Gens. 3

	GL	EBV	TOP%
GL	0.9	94%	
BW	0.6	65%	
200D	14	35%	
400D	20	55%	
600D	16	70%	
MCW	8	80%	
Milk	-1	35%	
SS	0.3	60%	
CW	11	60%	
EMA	0.3	85%	
RIB	0.8	20%	
RUMP	1	20%	
RBV	0	80%	
IMF	0.1	70%	

STEER INDEX
 EXP \$14 75%
 DOM \$11 85%

SEMEN MOTILITY MORPH
 ✓ ✓

DNA PV PV
 POLL HPc
 COAT ED/ED



Bimbadeen S A\$AP ROCKY 004 (PP)

CSONKA OF BRINKS 30R4 (PP)
OAKLANDS AMBASSADOR (PP) (ET)
MISS BRINKS SUNDANCE 392L (P)
S. **BIMBADEEN Q MEMPHIS (PP)**
DOONSIDE BB176-01 (P) (AI)
BIMBADEEN Q D0135 (PP)
BIMBADEEN Q P033 (P)

WEONA 1945 (P)
WEONA CALYPSO (P) (ET)
D. **FOREST HILLS FAY 1194 (PP)**
GLEN HEART 753 (P)
FOREST HILLS CASPAR 422 (P) (AI)
MUTDAWARRAH C12 (P)

The perfect heifer bull - the first Bimbadeen S offering is super-stout & calm-natured. Beautifully put together and very easy doing, this bull is ideal for weaner markets. EBVs predict very good GL, fertility & fats.

VIDEO LINK DAM'S HISTORY: f c f M m



PURCHASER:

\$

9
REGISTERED

Ident. SJS23R004
DOB. 18/10/2023
% BI. 50.5
Gens. 2

BREEDPLAN EBVs	TRAIT EBV TOP%		
	GL	-1.4	30%
	BW	0.1	55%
	200D	14	35%
	400D	14	75%
	600D	9	85%
	MCW	3	85%
	Milk	-1	35%
	SS	1.6	25%
	CW	6	85%
	EMA	0.7	75%
	RIB	1.2	10%
	RUMP	1.4	15%
	RBV	-0.2	90%
	IMF	0.4	35%

STEER INDEX
EXP \$15 70%
DOM \$15 75%

SEMEN MOTILITY MORPH
✓ ✓

DNA PV PV
POLL P_cP_c
COAT ED/ED



Bimbadeen VAN HALEN V012 (P)

CSONKA OF BRINKS 30R4 (PP)
OAKLANDS AMBASSADOR (PP) (ET)
MISS BRINKS SUNDANCE 392L (P)
S. **BIMBADEEN Q MEMPHIS (PP)**
DOONSIDE BB176-01 (P) (AI)
BIMBADEEN Q D0135 (PP)
BIMBADEEN Q P033 (P)

DOONSIDE IRA HAYES (P) (AI)
BIMBADEEN Q KAKADU (P)
BIMBADEEN Q Q105 (PP)
D. **BIMBADEEN Q N142 (P)**
BONOX 505 (P)
BIMBADEEN Q K107 (P)
BIMBADEEN Q D192 (P)

VAN HALEN is a rockstar of a bull with incredible presence. So thick, so long, so typey with a superb masculine Brangus head. Great weights/fats balance in his EBVs. Calm disposition.

VIDEO LINK DAM'S HISTORY: f f m f M f



PURCHASER:

\$

10
REGISTERED

Ident. BIM23RV012
DOB. 2/10/2023
% BI. 44.9
Gens. 2

BREEDPLAN EBVs	TRAIT EBV TOP%		
	GL	-0.1	70%
	BW	3.2	98%
	200D	22	10%
	400D	37	15%
	600D	44	15%
	MCW	4.2	15%
	Milk	1	15%
	SS	1.6	25%
	CW	20	15%
	EMA	1.1	60%
	RIB	0.5	35%
	RUMP	0.7	30%
	RBV	0.3	55%
	IMF	0.2	60%

STEER INDEX
EXP \$27 30%
DOM \$29 25%

SEMEN MOTILITY MORPH
✓ ✓

DNA PV VS
POLL HP_c
COAT ED/e



Bimbaddeen

VERTIGO V051 (PP)

LEAD GUN OF BRINKS 222K14 (P)
WASHINGTON OF BRINKS 302S47 (P)
 MS BRINKS BRIGHT SIDE 302L9 (P)
 S. **BIMBADEEN K300 (PP) (ET)**
 TRACKER OF BRINKS 541M8 (P) (AI)
MS BRINKS TRACKER 302R38 (P)
 MISS BRINKS CHALLENGER 302G3 (P) (AI)

TRANSFORMER OF BRINKS (P) (ET)
DOONSIDE IRA HAYES (P) (AI)
 DOONSIDE BB 3704-04 (P)
 D. **BIMBADEEN Q J136 (P)**
 GREENDALE URANIA (P)
BIMBADEEN Q R608 (P)
 BIMBADEEN Q K119 (P)

A lovely young bull who offers some truly outstanding genetics - sire and dam 10 & 11 years of age respectively when he was conceived. Great shape, slick skin, and strong weights EBVs. Excellent semen results.

VIDEO LINK **DAM'S HISTORY:** f c f f c M f f M f



PURCHASER:

\$

11
REGISTERED

Ident. BIM23RV051
 DOB. 6/11/2023
 % BI. 43.1
 Gens. 3

	TRAIT	EBV	TOP%
	GL	-1.4	30%
	BW	0.7	70%
	200D	18	20%
	400D	31	25%
	600D	34	25%
	MCW	48	8%
	Milk	-1	35%
	SS	1.4	30%
	CW	17	25%
	EMA	0.4	80%
	RIB	-1.2	94%
	RUMP	-1.6	94%
	RBV	0.6	35%
	IMF	0.2	60%

STEER INDEX
 EXP \$30 20%
 DOM \$31 20%

SEMEN MOTILITY MORPH
 ✓ ✓

DNA PV VS
 POLL PcPc
 COAT ED/ED



Bimbaddeen

VANDERBILT V099 (PP)

LEAD GUN OF BRINKS 222K14 (P)
CSONKA OF BRINKS 30R4 (PP)
 MISS BRINKS UPPERCUT 30L18 (P)
 S. **PALGROVE NITRO N250 (U) (PP) (AI)**
 W C C SPECIAL DESIGN L309 (P)
STONEY POINT YANKEE QUEEN B121 (P)
 STONEY POINT YANKEE QUEEN Y33 (P)

BONOX 368 (P)
BONOX 505 (P)
 BONOX B211 (P)
 D. **BIMBADEEN Q L91 (P)**
 DOONSIDE DR MOK (S)
BIMBADEEN Q G159 (P)
 BIMBADEEN Q Q007 (P)

VANDERBILT has fulfilled the legacy of elite EBV sire Palgrove Nitro N250 in super solid phenotype, the mothering backdrop of bull producing dam, L91. 12/14 EBV traits & indexes above average.

VIDEO LINK **DAM'S HISTORY:** M f m m M f M



PURCHASER:

\$

12
REGISTERED

Ident. BIM23RV099
 DOB. 9/10/2023
 % BI. 31.5
 Gens. 1

	TRAIT	EBV	TOP%
	GL	-2.6	15%
	BW	0.7	70%
	200D	17	25%
	400D	35	20%
	600D	39	20%
	MCW	41	15%
	Milk	2	6%
	SS	2.4	6%
	CW	19	20%
	EMA	1.3	50%
	RIB	0.3	45%
	RUMP	0.3	45%
	RBV	0.1	75%
	IMF	0.6	15%

STEER INDEX
 EXP \$34 15%
 DOM \$36 15%

SEMEN MOTILITY MORPH
 ✓ ✓

DNA PV VS
 POLL PcPc
 COAT ED/e

Bimbadeen VANADIUM V002 (PP)

CSONKA OF BRINKS 30R4 (PP)
OAKLANDS AMBASSADOR (PP) (ET)
 MISS BRINKS SUNDANCE 392L (P)
S. BIMBADEEN Q MEMPHIS (PP)
 DOONSIDE BB176-01 (P) (AI)
BIMBADEEN Q D0135 (PP)
 BIMBADEEN Q P033 (P)

CSONKA OF BRINKS 30R4 (PP)
TELPARA HILLS MUNDINE 820J2 (PP) (AI)
 TELPARA HILLS MISS L11 820D4 (PP)
D. BIMBADEEN Q N117 (P)
 GREENDALE TRACTION (P)
BIMBADEEN Q E0137 (P)
 BIMBADEEN Q L196 (P)

VANADIUM is a flatback style young bull offering strong weights and IMF EBVs and outstanding morph results. Dam is a consistent bull producer - full brothers presented at sale: Bimbadeen TRUMAN T3 (2023) and SOUNDGARDEN S84 (2022).

VIDEO LINK



DAM'S HISTORY:

f M M f M m

SEMEN	MOTILITY	MORPH
✓	✓	✓
DNA	PV VS	PcPc
	POLL	ED/ED
	COAT	

PURCHASER:

\$

13

REGISTERED

Ident. BIM23RV002
 DOB. 25/09/2023
 % BI. 43.8%
 Gens. 2

TRAIT	EBV	TOP%
GL	-1.1	40%
BW	2.5	95%
200D	26	4%
400D	36	15%
600D	40	20%
MCW	34	25%
Milk	-1	35%
SS	0.2	65%
CW	19	20%
EMA	0.6	75%
RIB	0	60%
RUMP	-0.1	60%
RFY	0.2	65%
IMF	0.6	15%

STEER INDEX
 EXP \$21 50%
 DOM \$19 60%

Bimbadeen VICARIOUS V255 (PP)

SINGLETON OF BRINKS 675R (PP)
BIMBADEEN Q LITCHFIELD L12 (PP) (ET)
 TELPARA HILLS MISS SUNDANCE 541D6 (P)(ET)
S. BIMBADEEN Q SORRENTO S170 (PP)
 BONOX 474 (P)
BIMBADEEN Q H114 (P)
 BIMBADEEN Q E0020 (P)

BRANGUS BULL (P)

D. BIMBADEEN Q R288 (PP)

BRANGUS COW (P)

The first Sorrento son on offer, VICARIOUS carries his great length with ease. He has great tropical skin with a super correct underline & fine prepuc with great semen results. Strong weight, EMA, IMF EBVs.

VIDEO LINK



DAM'S HISTORY:

s M m

SEMEN	MOTILITY	MORPH
✓	✓	✓
DNA	PV PV	PcPc
	POLL	ED/E+
	COAT	

PURCHASER:

\$

15

REGISTERED

Ident. BIM23FV255
 DOB. 4/12/2023
 % BI. 44.3%
 Gens.

TRAIT	EBV	TOP%
GL	0.2	80%
BW	0.8	70%
200D	14	35%
400D	28	30%
600D	32	30%
MCW	38	20%
Milk	-5	85%
SS	0.4	60%
CW	19	20%
EMA	1.8	35%
RIB	-0.1	65%
RUMP	-0.1	60%
RFY	0.5	40%
IMF	0.4	35%

STEER INDEX
 EXP \$26 30%
 DOM \$27 35%

Bimbadeen VICTORY V017 (PP)

CSONKA OF BRINKS 30R4 (PP)
OAKLANDS AMBASSADOR (PP) (ET)
 MISS BRINKS SUNDANCE 392L (P)
S. BIMBADEEN Q MEMPHIS (PP)
 DOONSIDE BB176-01 (P) (AI)
BIMBADEEN Q D0135 (PP)
 BIMBADEEN Q P033 (P)

CSONKA OF BRINKS 30R4 (PP)
OAKLANDS AMBASSADOR (PP) (ET)
 MISS BRINKS SUNDANCE 392L (P)
D. BIMBADEEN Q M25 (P)
 GREENDALE TRACTION (P)
BIMBADEEN Q E0012 (P)
 BIMBADEEN Q H211 (P)

Another Memphis son with great skin and a terrific set of EBVs indicate strong weights and outstanding finishing traits with fats in the top 7% and IMF top 6%.

VIDEO LINK



DAM'S HISTORY:

fff c f M f

SEMEN	MOTILITY	MORPH
✓	✓	✓
DNA	PV VS	PcPc
	POLL	ED/ED
	COAT	

PURCHASER:

\$

14

REGISTERED

Ident. BIM23RV017
 DOB. 20/11/2023
 % BI. 46.1%
 Gens. 2

TRAIT	EBV	TOP%
GL	-1.6	25%
BW	1	75%
200D	15	30%
400D	27	35%
600D	28	40%
MCW	15	65%
Milk	1	15%
SS	1.7	20%
CW	13	50%
EMA	1.8	35%
RIB	1.4	7%
RUMP	1.7	7%
RFY	-0.1	85%
IMF	0.8	6%

STEER INDEX
 EXP \$23 40%
 DOM \$25 40%

Bimbadeen VAUDEVILLE V004 (PP)

CSONKA OF BRINKS 30R4 (PP)
OAKLANDS AMBASSADOR (PP) (ET)
 MISS BRINKS SUNDANCE 392L (P)
S. BIMBADEEN Q MEMPHIS (PP)
 DOONSIDE BB176-01 (P) (AI)
BIMBADEEN Q D0135 (PP)
 BIMBADEEN Q P033 (P)

BRANGUS BULL B62A38 (P)

D. BIMBADEEN Q J299 (P)

BRANGUS COW B62A38 (P)

VAUDEVILLE offers some super strong Bimbadeen breeding and is only registered commercial due to speckle on dulp. He has excellent skin & outstanding (top 10%) weight & carcase EBVs.

VIDEO LINK



DAM'S HISTORY:

f M f M f M m

SEMEN	MOTILITY	MORPH
✓	✓	✓
DNA	PV VS	PcPc
	POLL	ED/ED
	COAT	

PURCHASER:

\$

16

COMMERCIAL

Ident. BIM23CV004
 DOB. 25/09/2023
 % BI. 52.8%
 Gens.

TRAIT	EBV	TOP%
GL	0	75%
BW	2.5	95%
200D	24	6%
400D	41	8%
600D	48	7%
MCW	54	5%
Milk	-3	60%
SS	1.7	20%
CW	25	5%
EMA	2.5	15%
RIB	0.8	20%
RUMP	1.1	20%
RFY	0.4	50%
IMF	0.5	25%

STEER INDEX
 EXP \$35 9%
 DOM \$37 10%

Bimbadeen VERMONT V010 (PP)

CSONKA OF BRINKS 30R4 (PP)
OAKLANDS AMBASSADOR (PP) (ET)
 MISS BRINKS SUNDANCE 392L (P)
S. BIMBADEEN Q MEMPHIS (PP)
 DOONSIDE BB176-01 (P) (AI)
BIMBADEEN Q D0135 (PP)
 BIMBADEEN Q P033 (P)

TRANSFORMER OF BRINKS (P) (ET)
DOONSIDE IRA HAYES (P) (AI)
 DOONSIDE BB 3704-04 (P)
D. BIMBADEEN Q J069 (P)
 BIMBADEEN Q E118 (P)
BIMBADEEN Q P060 (P)
 BIMBADEEN Q H061 (P)

Another stylish Memphis son out of dam J69 (full brother to Bimbadeen Remington, 2021 sale). Outstanding EBVs with great balance of weights and fats.

VIDEO LINK



DAM'S HISTORY:

M f m (d) f M f

SEMEN	MOTILITY	MORPH
✓	✓	✓
DNA	PV VS	
	POLL PcPc	
	COAT ED/ED	

PURCHASER:

\$

17

REGISTERED

Ident. BIM23RV010
 DOB. 6/11/2023
 % BI. 44.8%
 Gens. 2

TRAIT	EBV	TOP%
GL	-1.5	30%
BW	1.3	80%
200D	26	4%
400D	36	15%
600D	39	20%
MCW	28	35%
Milk	0	20%
SS	0.8	45%
CW	22	10%
EMA	2	25%
RIB	1.3	9%
RUMP	1.6	9%
RBV	-0.1	85%
IMF	1	2%

STEER INDEX

EXP \$31 20%
 DOM \$31 20%

18

REGISTERED

Ident. BIM23RV011
 DOB. 30/10/2023
 % BI. 42.6%
 Gens. 2

TRAIT	EBV	TOP%
GL	-1	40%
BW	1.7	90%
200D	21	15%
400D	31	25%
600D	33	25%
MCW	20	50%
Milk	0	20%
SS	1.3	30%
CW	16	30%
EMA	1.4	50%
RIB	0.8	20%
RUMP	1	20%
RBV	0.1	75%
IMF	0.9	4%

STEER INDEX

EXP \$23 40%
 DOM \$23 45%

Bimbadeen VARSITY V014 (PP)

CSONKA OF BRINKS 30R4 (PP)
OAKLANDS AMBASSADOR (PP) (ET)
 MISS BRINKS SUNDANCE 392L (P)
S. BIMBADEEN Q MEMPHIS (PP)
 DOONSIDE BB176-01 (P) (AI)
BIMBADEEN Q D0135 (PP)
 BIMBADEEN Q P033 (P)

BONOX 368 (P)
BONOX 505 (P)
 BONOX B211 (P)
D. BIMBADEEN Q M76 (P)
 DOONSIDE IRA HAYES (P) (AI)
BIMBADEEN Q J136 (P)
 BIMBADEEN Q R608 (P)

Slick skinned young bull with a mix of Bonox and Doonside in pedigree. VARSITY is very easy finishing Memphis son with strong fertility markers.

VIDEO LINK



DAM'S HISTORY:

c M M M f M f

SEMEN	MOTILITY	MORPH
✓	✓	✓
DNA	PV VS	
	POLL PcPc	
	COAT ED/ED	

PURCHASER:

\$

19

REGISTERED

Ident. BIM23RV014
 DOB. 30/10/2023
 % BI. 44.7%
 Gens. 2

TRAIT	EBV	TOP%
GL	-1.1	40%
BW	-0.9	25%
200D	10	55%
400D	16	70%
600D	9	85%
MCW	-2	90%
Milk	-2	45%
SS	1.5	25%
CW	8	75%
EMA	0.9	65%
RIB	0.3	45%
RUMP	0.3	45%
RBV	0.3	55%
IMF	0.6	15%

STEER INDEX

EXP \$18 60%
 DOM \$17 70%

Bimbadeen VAULT V011 (PP)

CSONKA OF BRINKS 30R4 (PP)
OAKLANDS AMBASSADOR (PP) (ET)
 MISS BRINKS SUNDANCE 392L (P)
S. BIMBADEEN Q MEMPHIS (PP)
 DOONSIDE BB176-01 (P) (AI)
BIMBADEEN Q D0135 (PP)
 BIMBADEEN Q P033 (P)

CSONKA OF BRINKS 30R4 (PP)
OAKLANDS AMBASSADOR (PP) (ET)
 MISS BRINKS SUNDANCE 392L (P)
D. BIMBADEEN Q N62 (P)
 DOONSIDE DR MOK (S)
BIMBADEEN Q G159 (P)
 BIMBADEEN Q Q007 (P)

VAULT offers great fertility markers (and semen results) with very strong weights & fats - top 4% IMF! Another great young Memphis son.

VIDEO LINK



DAM'S HISTORY:

F m f M M m

SEMEN	MOTILITY	MORPH
✓	✓	✓
DNA	PV VS	
	POLL PcPc	
	COAT ED/ED	

PURCHASER:

\$

Bimbadeen VEGAS V021 (PP)

CSONKA OF BRINKS 30R4 (PP)
OAKLANDS AMBASSADOR (PP) (ET)
 MISS BRINKS SUNDANCE 392L (P)
S. BIMBADEEN Q MEMPHIS (PP)
 DOONSIDE BB176-01 (P) (AI)
BIMBADEEN Q D0135 (PP)
 BIMBADEEN Q P033 (P)

BONOX 368 (P)
BONOX 505 (P)
 BONOX B211 (P)
D. BIMBADEEN Q M48 (P)
 BRAHMAN BULL (P)
BIMBADEEN Q J519 (P)
 BRANGUS COW B25A75 (P)

Terrific slick Memphis son out of a bull-producing dam. VEGAS offers outstanding weights, fats and fertility EBVs and semen markers.

VIDEO LINK



DAM'S HISTORY:

c M m c M M f

SEMEN	MOTILITY	MORPH
✓	✓	✓
DNA	PV VS	
	POLL PcPc	
	COAT ED/E+	

PURCHASER:

\$

20

REGISTERED

Ident. BIM23RV021
 DOB. 25/09/2023
 % BI. 48.1%
 Gens. 1

TRAIT	EBV	TOP%
GL	-1.1	40%
BW	3.6	99%
200D	25	5%
400D	44	5%
600D	50	6%
MCW	46	9%
Milk	-1	35%
SS	2.7	3%
CW	23	8%
EMA	2.6	15%
RIB	0.5	35%
RUMP	0.6	35%
RBV	0.7	30%
IMF	0.3	45%

STEER INDEX

EXP \$32 15%
 DOM \$33 20%

Bimbadeen VOLTAGE V190 (PP)

- CSONKA OF BRINKS 30R4 (PP)
OAKLANDS AMBASSADOR (PP) (ET)
 MISS BRINKS SUNDANCE 392L (P)
S. BIMBADEEN Q MEMPHIS (PP)
 DOONSIDE BB176-01 (P) (AI)
BIMBADEEN Q D0135 (PP)
 BIMBADEEN Q P033 (P)
-
- CSONKA OF BRINKS 30R4 (PP)
TEL PARA HILLS MUNDINE 820J2 (PP) (AI)
 TEL PARA HILLS MISS L11 820D4 (PP)
D. BIMBADEEN Q P0100 (PP) (AI)
 DOONSIDE IRA HAYES (P) (AI)
BIMBADEEN Q L119 (P)
 BIMBADEEN Q L207 (P)

Pedigree featuring breed stars - Czonka of Brinks, Doonside Ira Hayes, Doonside BB 176 & Bimbadeen dam line 40 years/8 gens deep. Terrific weight, milk EBVs & semen results.

VIDEO LINK



DAM'S HISTORY:

M m d M M

SEMEN	MOTILITY	MORPH
✓	✓	✓
DNA	PV	PV
	POLL	PcPc
	COAT	ED/ED

PURCHASER:

\$

21

REGISTERED

Ident. BIM23RV190
 DOB. 16/10/2023
 % BI. 43.9%
 Gens. 2

TRAIT	EBV	TOP%
GL	-1.5	30%
BW	2.7	96%
200D	26	4%
400D	42	7%
600D	45	10%
MCW	34	25%
Milk	2	6%
SS	1.8	20%
CW	21	15%
EMA	1.3	50%
RIB	-0.4	75%
RUMP	-0.5	75%
RBY	0.7	30%
IMF	0.2	60%

STEER INDEX	EXP	\$29	25%
	DOM	\$28	30%

22

REGISTERED

Ident. BIM23RV052
 DOB. 9/10/2023
 % BI. 34.9%
 Gens. 1

TRAIT	EBV	TOP%
GL	-3.3	6%
BW	0.1	55%
200D	24	6%
400D	40	9%
600D	38	20%
MCW	20	50%
Milk	3	3%
SS	0.7	45%
CW	20	15%
EMA	0.6	75%
RIB	-0.3	70%
RUMP	-0.5	75%
RBY	0.3	55%
IMF	0.7	9%

STEER INDEX	EXP	\$32	15%
	DOM	\$28	30%

Bimbadeen VINEYARD V058 (PP)

- OAKLANDS AMBASSADOR (PP) (ET)
BIMBADEEN Q MAVERICK (PP)
 BIMBADEEN Q R22 (PP)
S. GINOONDAN DRUMMOND (PP)
 GINOONDAN KINSEY 175 (P)
GINOONDAN 264 (P)
 GINOONDAN 153 (P)
-
- CSONKA OF BRINKS 30R4 (PP)
OAKLANDS AMBASSADOR (PP) (ET)
 MISS BRINKS SUNDANCE 392L (P)
D. BIMBADEEN Q Q110 (PP)
 BIMBADEEN Q GRAPHITE (PP)
BIMBADEEN Q K10 (P)
 BIMBADEEN Q G84 (P)

Drummond son with all indicators pointing towards a fertile and easy doing heifer bull with great fat EBVs.

VIDEO LINK



DAM'S HISTORY:

f c M M f

SEMEN	MOTILITY	MORPH
✓	✓	✓
DNA	PV	PV
	POLL	PcPc
	COAT	ED/e

PURCHASER:

\$

23

REGISTERED

Ident. BIM23RV058
 DOB. 9/10/2023
 % BI. 45.6%
 Gens. 3

TRAIT	EBV	TOP%
GL	-0.5	55%
BW	-0.7	30%
200D	9	60%
400D	10	85%
600D	1	93%
MCW	-7	94%
Milk	1	15%
SS	0.6	50%
CW	4	91%
EMA	0.3	85%
RIB	1.3	9%
RUMP	1.5	10%
RBY	-0.5	95%
IMF	0.8	6%

STEER INDEX	EXP	\$10	90%
	DOM	\$7	93%

Bimbadeen VALOUR V052 (PP)

- LEAD GUN OF BRINKS 222K14 (P)
CSONKA OF BRINKS 30R4 (PP)
 MISS BRINKS UPPER CUT 30L18 (P)
S. PALGROVE NITRO N250 (U) (PP) (AI)
 W C C SPECIAL DESIGN L309 (P)
STONE POINT YANKEE QUEEN B121 (P)
 STONEY POINT YANKEE QUEEN Y33 (P)
-
- RUSHTON CSONKA'S FORTUNE (P) (ET)
BIMBADEEN Q GRAPHITE (PP)
 BIMBADEEN Q D0314 (P)
D. BIMBADEEN Q Q77 (PP)
 BRANGUS BULL (P)
BIMBADEEN Q Q0103 (P)
 BIMBADEEN Q K147 (P)

Thumping (top 10%) for Gestation, 200, 400 dw, milk and IMF EBVs. Very neat phenotype like sire Palgrove Nitro - dam Q77 cowline 44 years/7 gens deep.

VIDEO LINK



DAM'S HISTORY:

c M f M

SEMEN	MOTILITY	MORPH
✓	✓	✓
DNA	PV	PV
	POLL	PcPc
	COAT	ED/ED

PURCHASER:

\$

Bimbadeen VALIDATE V064 (PP)

- LEAD GUN OF BRINKS 222K14 (P)
WASHINGTON OF BRINKS 302S47 (P)
 MS BRINKS BRIGHT SIDE 302L9 (P)
S. BIMBADEEN K300 (PP) (ET)
 TRACKER OF BRINKS 541M8 (P) (AI)
MS BRINKS TRACKER 302R38 (P)
 MISS BRINKS CHALLENGER 302G3 (P) (AI)
-
- WASHINGTON OF BRINKS 302S47 (P)
BIMBADEEN Q H1 (P) (ET)
 MS BRINKS TRACKER 302R38 (P)
D. BIMBADEEN Q L55 (P)
 GREENDALE TRACTION (P)
BIMBADEEN Q D5 (P)
 BIMBADEEN Q G085 (P)

Terrific longevity in pedigree with sire 10yo and dam 8yo at conception. Another bull likely to be suited to heifers - strong fertility, EMA, yield EBVs.

VIDEO LINK



DAM'S HISTORY:

f m M f f M m

SEMEN	MOTILITY	MORPH
✓	✓	✓
DNA	PV	VS
	POLL	PcPc
	COAT	ED/ED

PURCHASER:

\$

24

REGISTERED

Ident. BIM23RV064
 DOB. 30/10/2023
 % BI. 40.7%
 Gens. 2

TRAIT	EBV	TOP%
GL	-0.2	65%
BW	-0.6	30%
200D	8	65%
400D	11	80%
600D	7	85%
MCW	8	80%
Milk	-3	60%
SS	2	15%
CW	6	85%
EMA	2	25%
RIB	-0.2	70%
RUMP	-0.2	65%
RBY	1	15%
IMF	-0.3	96%

STEER INDEX	EXP	\$20	55%
	DOM	\$22	50%

Bimbadeen VINTAGE V065 (PP)

LEAD GUN OF BRINKS 222K14 (P)
WASHINGTON OF BRINKS 302S47 (P)
 MS BRINKS BRIGHT SIDE 302L9 (P)
S. BIMBADEEN K300 (PP) (ET)
 TRACKER OF BRINKS 541M8 (P) (AI)
MS BRINKS TRACKER 302R38 (P)
 MISS BRINKS CHALLENGER 302G3 (P) (AI)

WASHINGTON OF BRINKS 302S47 (P)
BIMBADEEN Q H1 (P) (ET)
 MS BRINKS TRACKER 302R38 (P)
D. BIMBADEEN Q L026 (P)
 BRANGUS BULL (P)
BIMBADEEN Q Q244 (P)
 BRANGUS COW (P)

Another K300 son with great longevity in background. Very strong EMA and yield EBVs - all in a very tidy phenotype.

VIDEO LINK



DAM'S HISTORY:

c c c c c m M m

SEMEN MOTILITY MORPH

DNA PV VS
 POLL PcPc
 COAT ED/E+

PURCHASER:

\$

25

REGISTERED

Ident. BIM23RV065
 DOB. 6/11/2023
 % BI. 40.6%
 Gens. 1

TRAIT EBV TOP%

GL -0.6 50%
 BW 0.7 70%
200D 13 40%
400D 19 60%
600D 12 80%
MCW 1 90%
Milk -4 75%
SS 0.9 40%
CW 9 70%
EMA 2.4 15%
RIB -0.1 65%
RUMP -0.1 60%
RBY 1.3 6%
IMF -0.4 98%

STEER INDEX

EXP \$17 65%
 DOM \$15 75%

ABCA

BREEDPLAN EBVs

STEER INDEX

EXP \$17 65%
 DOM \$15 75%

Bimbadeen VAUXALL V095 (PP)

DOONSIDE IRA HAYES (P) (AI)
BIMBADEEN Q KAKADU (P)
 BIMBADEEN Q Q105 (PP)
S. BIMBADEEN Q NULLABOR N78 (PP)
 GREENDALE Y181 (P)
BIMBADEEN Q G0200 (P)
 BIMBADEEN Q Q019 (P)

CSONKA OF BRINKS 30R4 (PP)
OAKLANDS AMBASSADOR (PP) (ET)
 MISS BRINKS SUNDANCE 392L (P)
D. BIMBADEEN Q Q103 (PP)
 BIMBADEEN Q GRAPHITE (PP)
BIMBADEEN Q K36 (P)
 BIMBADEEN Q G231 (P)

The first of two Nullabor son in this sale, Vauxall is the first male calf for dam Q103. EBVs indicate heifer bull with good GL, BW, yield & IMF traits.

VIDEO LINK



DAM'S HISTORY:

F F M F

SEMEN MOTILITY MORPH

DNA PV PV
 POLL PcPc
 COAT ED/ED

PURCHASER:

\$

27

REGISTERED

Ident. BIM23RV095
 DOB. 20/11/2023
 % BI. 43.1%
 Gens. 3

TRAIT EBV TOP%

GL -0.9 45%
 BW -0.5 35%
200D 8 65%
400D 16 70%
600D 15 70%
MCW 12 70%
Milk -2 45%
SS 0.8 45%
CW 9 70%
EMA 1.1 60%
RIB -0.6 85%
RUMP -0.8 85%
RBY 0.6 35%
IMF 0.5 25%

STEER INDEX

EXP \$18 60%
 DOM \$20 60%

ABCA

BREEDPLAN EBVs

STEER INDEX

EXP \$18 60%
 DOM \$20 60%

Bimbadeen VILLANEUVE V067 (PP)

LEAD GUN OF BRINKS 222K14 (P)
WASHINGTON OF BRINKS 302S47 (P)
 MS BRINKS BRIGHT SIDE 302L9 (P)
S. BIMBADEEN K300 (PP) (ET)
 TRACKER OF BRINKS 541M8 (P) (AI)
MS BRINKS TRACKER 302R38 (P)
 MISS BRINKS CHALLENGER 302G3 (P) (AI)

SR CADENCE WARRIOR H823 (P)
TCB CATAWBA WARRIOR R532 (P)
 SR WARRIOR PRINCESS N332 (P)
D. BIMBADEEN Q N120 (PP) (AI)
 BONOX 505 (P)
BIMBADEEN Q K118 (P)
 BIMBADEEN Q M302 (P)

Great balance in EBV chart with very strong weights, EMA (top 3%) and Yield (top 2%) traits. Maternal grandsire curvebender Catawba Warrior R532.

VIDEO LINK



DAM'S HISTORY:

c f m m M m

SEMEN MOTILITY MORPH

DNA PV PV
 POLL PcPc
 COAT ED/ED

PURCHASER:

\$

26

REGISTERED

Ident. BIM23RV067
 DOB. 23/10/2023
 % BI. 39.7%
 Gens. 2

TRAIT EBV TOP%

GL -0.8 45%
 BW 0.5 65%
200D 15 30%
400D 27 35%
600D 25 45%
MCW 23 45%
Milk -3 60%
SS 1.1 35%
CW 17 25%
EMA 3.5 3%
RIB -0.3 70%
RUMP -0.3 70%
RBY 1.7 2%
IMF -0.4 98%

STEER INDEX

EXP \$29 25%
 DOM \$29 25%

ABCA

BREEDPLAN EBVs

STEER INDEX

EXP \$29 25%
 DOM \$29 25%

Bimbadeen VORTEX V096 (PP)

DOONSIDE IRA HAYES (P) (AI)
BIMBADEEN Q KAKADU (P)
 BIMBADEEN Q Q105 (PP)
S. BIMBADEEN Q NULLABOR N78 (PP)
 GREENDALE Y181 (P)
BIMBADEEN Q G0200 (P)
 BIMBADEEN Q Q019 (P)

WEONA COCHISEE (PP)
BIMBADEEN Q B04 (PP) (AI)
 BIMBADEEN Z71 (P)
D. BIMBADEEN Q Q168 (PP)
 BIMBADEEN Q GRAPHITE (PP)
BIMBADEEN Q M94 (P)
 BIMBADEEN Q E0025 (P)

The final ever Nullabor son to be offered - with fertile dam line tracing back 7 registered gens/35 years. EBVs indicate Vortex will make a heifer bull with strong fats (top 6% IMF).

VIDEO LINK



DAM'S HISTORY:

s M M f

SEMEN MOTILITY MORPH

DNA PV PV
 POLL PcPc
 COAT ED/ED

PURCHASER:

\$

28

REGISTERED

Ident. BIM23RV096
 DOB. 16/10/2023
 % BI. 46.8%
 Gens. 2

TRAIT EBV TOP%

GL 0.4 85%
 BW -0.4 40%
200D 2 90%
400D 12 80%
600D 10 80%
MCW 19 55%
Milk -2 45%
SS -0.5 85%
CW 7 80%
EMA 0.5 80%
RIB 0.7 25%
RUMP 0.8 25%
RBY -0.4 92%
IMF 0.8 6%

STEER INDEX

EXP \$11 85%
 DOM \$10 90%

ABCA

BREEDPLAN EBVs

STEER INDEX

EXP \$11 85%
 DOM \$10 90%



Bimbadeen VELOCITY V100 (PP)

- S. **BIMBADEEN Q QANTAS Q137 (PP)**
 CSONKA OF BRINKS 30R4 (PP)
 TELPARA HILLS MUNDINE 820J2 (PP) (AI)
 TELPARA HILLS MISS L11 820D4 (PP)
 SUHN'S NEXT STEP 331R7 (P)
BIMBADEEN Q M138 (P) (ET)
 TELPARA HILLS MISS CSONKA 541H (P) (ET)
-
- D. **BIMBADEEN Q Q79 (PP)**
 RUSHTON CSONKA'S FORTUNE (P) (ET)
BIMBADEEN Q GRAPHITE (PP)
 BIMBADEEN Q D0314 (P)
BIMBADEEN Q K118 (P)
 BONOX 505 (P)
 BIMBADEEN Q M302 (P)

Lovely strong square young bull, with great balance of fats, fertility & EMA EBVs. By super quiet sire Bimbadeen Qantas out of Bonox 505 granddaughter.

VIDEO LINK DAM'S HISTORY: m m M f



PURCHASER:

\$

29
REGISTERED

Ident. BIM23RV100
 DOB. 30/10/2023
 % BI. 42.8
 Gens. 2

BREEDPLAN EBVs	TRAIT EBV TOP%		
	GL	-0.6	50%
	BW	-0.3	40%
	200D	8	65%
	400D	16	70%
	600D	21	55%
	MCW	15	65%
	Milk	-2	45%
	SS	0.9	40%
	CW	11	60%
	EMA	1.6	40%
	RIB	0.7	25%
	RUMP	0.8	25%
	RBV	0.2	65%
	IMF	0.6	15%

STEER INDEX
 EXP \$17 65%
 DOM \$22 50%

SEMEN MOTILITY MORPH
 ✓ ✓

DNA PV PV
 POLL PcPc
 COAT ED/ED



Bimbadeen VECTOR V150 (PP)

- S. **TRIPLE B NOBLE N405 (PP)**
 SUHN'S NEXT STEP 331R7 (P)
 TRIPLE B JASPER J531 (PP) (ET)
 TRIPLE B MADDISON D176 (PP)
 YABBA-DO D43 (P) (ET)
TRIPLE B CORDELIA K23 (P)
 TRIPLE B CORDELIA E275 (P)
-
- D. **BIMBADEEN Q K57 (P)**
 BONOX 474 (P)
 BONOX 74 (P)
 BONOX 302 (P)
BIMBADEEN Q F10 (P)
 GREENDALE X416 (P)

Lovely shaped young Noble son with great Brangus style and slick skin. Very strong fertility indicators (and results) and strong fat EBVs.

VIDEO LINK DAM'S HISTORY: f f s f f m M f



PURCHASER:

\$

30
REGISTERED

Ident. BIM23RV150
 DOB. 23/10/2023
 % BI. 44.0
 Gens. 2

BREEDPLAN EBVs	TRAIT EBV TOP%		
	GL	-0.3	65%
	BW	-1.7	8%
	200D	5	80%
	400D	14	75%
	600D	7	85%
	MCW	-7	94%
	Milk	-4	75%
	SS	1.2	35%
	CW	7	80%
	EMA	-0.2	92%
	RIB	0.9	20%
	RUMP	1.1	20%
	RBV	-0.4	92%
	IMF	0.6	15%

STEER INDEX
 EXP \$16 70%
 DOM \$14 80%

SEMEN MOTILITY MORPH
 ✓ ✓

DNA PV VS
 POLL PcPc
 COAT ED/ED



Bimbadeen

VALLEY V198 (PP)

- OAKLANDS AMBASSADOR (PP) (ET)
BIMBADEEN Q MAVERICK (PP)
 BIMBADEEN Q R22 (PP)
 S. **GINOONDAN DRUMMOND (PP)**
 GINOONDAN KINSEY 175 (P)
GINOONDAN 264 (P)
 GINOONDAN 153 (P)
-
- CSONKA OF BRINKS 30R4 (PP)
TEL PARA HILLS MUNDINE 820J2 (PP) (AI)
 TEL PARA HILLS MISS L11 820D4 (PP)
 D. **BIMBADEEN Q P94 (PP)**
 BONOX 302 (P)
BIMBADEEN Q G4 (P)
 BIMBADEEN Q Q117 (P)

A super soft Drummond son, with that great shape and square structure with beautiful Brangus head. Very strong fertility results and great fat EBVs.

VIDEO LINK DAM'S HISTORY: F m m M f



PURCHASER:

\$

31
REGISTERED

Ident. BIM23RV198
 DOB. 16/10/2023
 % BI. 46.8
 Gens. 2

ABCA	TRAIT	EBV	TOP%
	GL	-0.1	70%
	BW	-0.3	40%
	200D	9	60%
	400D	15	70%
	600D	11	80%
	MCW	-2	90%
	Milk	-3	60%
	SS	1.8	20%
	CW	7	80%
	EMA	0.5	80%
	RIB	1.3	9%
	RUMP	1.6	9%
	RBV	-0.1	85%
	IMF	0.5	25%

STEER INDEX
 EXP \$15 70%
 DOM \$16 75%

SEMEN	MOTILITY	MORPH
	✓	✓
DNA	PV	PV
	POLL	PcPc
	COAT	ED/ED



Bimbadeen

VALIANT V193 (PP)

- LEAD GUN OF BRINKS 222K14 (P)
CSONKA OF BRINKS 30R4 (PP)
 MISS BRINKS UPPERCUT 30L18 (P)
 S. **PALGROVE NITRO N250 (U) (PP) (AI)**
 W C C SPECIAL DESIGN L309 (P)
STONEY POINT YANKEE QUEEN B121 (P)
 STONEY POINT YANKEE QUEEN Y33 (P)
-
- BONOX 474 (P)
BIMBADEEN Q K64 (P)
 BIMBADEEN Q F43 (P)
 D. **BIMBADEEN Q P0150 (P)**
 BONOX 505 (P)
BIMBADEEN Q K15 (P)
 BIMBADEEN Q P004 (P)

The final Palgrove Nitro son on offer with some absolutely thumping EBVs across gestation (top 10%), weights (top 3%), SS (top 1%) with indexes top 1%. Excellent semen results.

VIDEO LINK DAM'S HISTORY: M f m M f



PURCHASER:

\$

32
REGISTERED

Ident. BIM23RV193
 DOB. 30/10/2023
 % BI. 32.9
 Gens. 1

ABCA	TRAIT	EBV	TOP%
	GL	-2.8	10%
	BW	1.6	90%
	200D	27	3%
	400D	50	3%
	600D	60	2%
	MCW	60	3%
	Milk	-1	35%
	SS	3.4	1%
	CW	28	3%
	EMA	1.5	45%
	RIB	-1	91%
	RUMP	-1.4	92%
	RBV	0.9	20%
	IMF	0.4	35%

STEER INDEX
 EXP \$47 1%
 DOM \$51 1%

SEMEN	MOTILITY	MORPH
	✓	✓
DNA	PV	PV
	POLL	PcPc
	COAT	ED/e

Bimbadeen VENDETTA V153 (P)

- OAKLANDS AMBASSADOR (PP) (ET)
BIMBADEEN Q MEMPHIS (PP)
 BIMBADEEN Q D0135 (PP)
 S. **BIMBADEEN TAURUS T13 (PP)**
 OAKLANDS AMBASSADOR (PP) (ET)
BIMBADEEN Q M9 (P)
 BIMBADEEN Q G159 (P)
 CSONKA OF BRINKS 30R4 (PP)
OAKLANDS AMBASSADOR (PP) (ET)
 MISS BRINKS SUNDANCE 392L (P)
 D. **BIMBADEEN Q P67 (P)**
 DOONSIDE BB176-01 (P) (AI)
BIMBADEEN Q Q021 (P)
 BIMBADEEN Q K003 (P)

A 'get' by a weaner bull (who went on to be a stylish sale bull in our 2023 sale) this young bulls offers a strong array of weight, yield & fertility EBVs.

VIDEO LINK



DAM'S HISTORY:

s f M M

SEMEN	MOTILITY	MORPH
✓	✓	✓
DNA	PV	PV
	POLL	HPc
	COAT	ED/ED

PURCHASER:

\$

33

REGISTERED

Ident. BIM23RV153
 DOB. 30/10/2023
 % BI. 42%
 Gens. 3

TRAIT	EBV	TOP%
GL	0	75%
BW	2.2	92%
200D	20	15%
400D	29	30%
600D	31	30%
MCW	29	35%
Milk	-2	45%
SS	2.1	10%
CW	17	25%
EMA	2	25%
RIB	0.1	55%
RUMP	0.2	50%
RBV	0.8	25%
IMF	0.1	70%

STEER INDEX	EXP	\$27	30%
	DOM	\$28	30%

ABCA

BREEDPLAN EBVs

Bimbadeen VENERATE V189 (PP)

- OAKLANDS AMBASSADOR (PP) (ET)
BIMBADEEN Q MAVERICK (PP)
 BIMBADEEN Q R22 (PP)
 S. **GINOONDAN DRUMMOND (PP)**
 GINOONDAN KINSEY 175 (P)
GINOONDAN 264 (P)
 GINOONDAN 153 (P)
 CSONKA OF BRINKS 30R4 (PP)
TELPARA HILLS MUNDINE 820J2 (PP) (AI)
 TELPARA HILLS MISS L11 820D4 (PP)
 D. **BIMBADEEN Q P84 (PP)**
 DOONSIDE DR MOK (S)
BIMBADEEN Q H201 (P)
 BIMBADEEN Q R415 (P)

The last Drummond son in this sale, VENERATE offers very strong weight, milk (top 3%) and fats (top 9% IMF) EBVs. Great morph results.

VIDEO LINK



DAM'S HISTORY:

m f f M M

SEMEN	MOTILITY	MORPH
✓	✓	✓
DNA	PV	PV
	POLL	PcPc
	COAT	ED/ED

PURCHASER:

\$

35

REGISTERED

Ident. BIM23RV189
 DOB. 13/11/2023
 % BI. 45.9%
 Gens. 3

TRAIT	EBV	TOP%
GL	-0.8	45%
BW	2.3	93%
200D	22	10%
400D	29	30%
600D	34	25%
MCW	32	30%
Milk	3	3%
SS	-1.2	96%
CW	17	25%
EMA	0.9	65%
RIB	0.7	25%
RUMP	0.7	30%
RBV	0	80%
IMF	0.7	9%

STEER INDEX	EXP	\$17	65%
	DOM	\$16	75%

ABCA

BREEDPLAN EBVs

Bimbadeen VALANCE V188 (PP)

- LEAD GUN OF BRINKS 222K14 (P)
WASHINGTON OF BRINKS 302S47 (P)
 MS BRINKS BRIGHT SIDE 302L9 (P)
 S. **BIMBADEEN K300 (PP) (ET)**
 TRACKER OF BRINKS 541M8 (P) (AI)
MS BRINKS TRACKER 302R38 (P)
 MISS BRINKS CHALLENGER 302G3 (P) (AI)
 CSONKA OF BRINKS 30R4 (PP)
TELPARA HILLS MUNDINE 820J2 (PP) (AI)
 TELPARA HILLS MISS L11 820D4 (PP)
 D. **BIMBADEEN Q P96 (PP)**
 BIMBADEEN Q Q003 (P) (AI)
BIMBADEEN Q G65 (P)
 BIMBADEEN Q K303 (P)

The final K300 son in the catalogue and out of consistent TH Mundine daughter P96, VALANCE offers gd weights, EMA, yield EBVs.

VIDEO LINK



DAM'S HISTORY:

f M m M f

SEMEN	MOTILITY	MORPH
✓	✓	✓
DNA	PV	PV
	POLL	PcPc
	COAT	ED/ED

PURCHASER:

\$

34

REGISTERED

Ident. BIM23RV188
 DOB. 4/12/2023
 % BI. 41.3%
 Gens. 2

TRAIT	EBV	TOP%
GL	-0.1	70%
BW	2.2	92%
200D	18	20%
400D	26	35%
600D	23	50%
MCW	13	70%
Milk	-6	90%
SS	0.9	40%
CW	12	55%
EMA	1.6	40%
RIB	-0.7	85%
RUMP	-0.9	85%
RBV	1	15%
IMF	-0.1	90%

STEER INDEX	EXP	\$18	60%
	DOM	\$16	75%

ABCA

BREEDPLAN EBVs

Bimbadeen VIBE V252 (PP)

- SINGLETTY OF BRINKS 675R (PP)
BIMBADEEN Q LITCHFIELD L12 (PP) (ET)
 TELPARA HILLS MISS SUNDANCE 541D6 (P)(ET)
 S. **BIMBADEEN Q SORRENTO S170 (PP)**
 BONOX 474 (P)
BIMBADEEN Q H114 (P)
 BIMBADEEN Q E0020 (P)
 WASHINGTON OF BRINKS 302S47 (P)
BIMBADEEN K300 (PP) (ET)
 MS BRINKS TRACKER 302R38 (P)
 D. **BIMBADEEN Q R113 (PP)**
 DOONSIDE IRA HAYES (P) (AI)
BIMBADEEN Q J070 (P)
 BIMBADEEN Q D0135 (PP)

This Sorrento son out of a D0135 granddaughter offers steer indicies in the top 6%. He is a strong contender for commercially minded buyers, esp those chasing the finished steer market. Strong fertility markers.

VIDEO LINK



DAM'S HISTORY:

s M

SEMEN	MOTILITY	MORPH
✓	✓	✓
DNA	PV	PV
	POLL	PcPc
	COAT	ED/ED

PURCHASER:

\$

36

REGISTERED

Ident. BIM23RV252
 DOB. 13/11/2023
 % BI. 40.2%
 Gens. 3

TRAIT	EBV	TOP%
GL	0.2	80%
BW	1.4	85%
200D	15	30%
400D	34	20%
600D	43	15%
MCW	57	4%
Milk	-3	60%
SS	3	2%
CW	20	15%
EMA	0.6	75%
RIB	0.1	55%
RUMP	0.2	50%
RBV	0.2	65%
IMF	0.1	70%

STEER INDEX	EXP	\$38	6%
	DOM	\$44	3%

ABCA

BREEDPLAN EBVs

Biimbadeen VLADIMIR V277 (PP)

SINGLETARY OF BRINKS 675R (PP)
BIMBADEEN Q LITCHFIELD L12 (PP) (ET)
 TELPARA HILLS MISS SUNDANCE 541D6 (P)(ET)
S. BIMBADEEN Q SORRENTO S170 (PP)
 BONOX 474 (P)
BIMBADEEN Q H114 (P)
 BIMBADEEN Q E0020 (P)

BRANGUS BULL (P)

D. BIMBADEEN Q R305 (P)

BRANGUS COW (P)

VLADIMIR offers a good balance of weights and fats (incl IMF) with super slick skin and is a first calf for dam R305.

VIDEO LINK



DAM'S HISTORY:

s M

SEMEN	MOTILITY	MORPH
	✓	✓
DNA	PV	PV
	POLL	PcPc
	COAT	ED/ED

PURCHASER:

\$

37

REGISTERED

Ident. BIM23FV277
 DOB. 6/11/2023
 % BI. 44.3%
 Gens.

TRAIT	EBV	TOP%
GL	1.3	98%
BW	1	75%
200D	9	60%
400D	23	45%
600D	27	40%
MCW	32	30%
Milk	-8	98%
SS	-0.5	85%
CW	16	30%
EMA	1.6	40%
RIB	0.6	30%
RUMP	0.8	25%
RBY	0.1	75%
IMF	0.5	25%

STEER INDEX

EXP \$19 55%
 DOM \$21 55%

BREEDPLAN EBVs

ABCA

38

ENROLLED

Ident. BIM23EV072
 DOB. 9/10/2023
 % BI. 46.9%
 Gens. 3

TRAIT	EBV	TOP%
GL	-2.1	20%
BW	0.1	55%
200D	19	20%
400D	33	20%
600D	43	15%
MCW	41	15%
Milk	-2	45%
SS	1.2	35%
CW	20	15%
EMA	0.5	80%
RIB	-0.3	70%
RUMP	-0.4	70%
RBY	0.2	65%
IMF	0.7	9%

STEER INDEX

EXP \$32 15%
 DOM \$37 10%

BREEDPLAN EBVs

ABCA

Biimbadeen VIN DEISEL V072 (PP)

S. BRANGUS BULL (P)

CB HOMBRE 541T3 (PP)
TELPARA HILLS JACKMAN 541H17 (PP) (ET)
 TELPARA HILLS MISS SINGLETARY 541E (P) (ET)

D. BIMBADEEN Q076 (P)

BRANGUS COW (P)

VIN DEISEL is a first calf for dam Q76 and has beautiful Brangus skin. He also offer top 20% weights and top 9% IMF EBV indicators. Very strong semen results.

VIDEO LINK



DAM'S HISTORY:

c c c (enrolled) M m

SEMEN	MOTILITY	MORPH
	✓	✓
DNA	PV	PV
	POLL	PcPc
	COAT	ED/ED

PURCHASER:

\$



We work to ensure our cattle respect all kinds of handling - Biimbadeen cattle are regularly mustered with horses and dogs. Bulls are also handled with side-by-sides (buggies) in the lead-up to sale time. All cattle are handled in yards on foot & horse.

Photos with V weaner bulls - Sarah with V55 above, & Jack with mob on their first outing, below.





Bimbadeen

VERDICT V248 (PP)

SINGLETARY OF BRINKS 675R (PP)

BIMBADEEN Q LITCHFIELD L12 (PP) (ET)

TELPARA HILLS MISS SUNDANCE 541D6 (P)(ET)

S. **BIMBADEEN Q SORRENTO S170 (PP)**

BONOX 474 (P)

BIMBADEEN Q H114 (P)

BIMBADEEN Q E0020 (P)

WASHINGTON OF BRINKS 302S47 (P)

BIMBADEEN K300 (PP) (ET)

MS BRINKS TRACKER 302R38 (P)

D. **BIMBADEEN Q R114 (P)**

BONOX 505 (P)

BIMBADEEN Q L106 (P)

BIMBADEEN Q E29 (P)

This Sorrento son offers strong mature weights and scrotal size (top 15%) for those seeking a slick fertile sire for the steer market (top 15% dom steer index).

VIDEO LINK DAM'S HISTORY: s M m



PURCHASER:

\$

39
REGISTERED

Ident. BIM23RV248
DOB. 30/10/2023
% BI. 39.9
Gens. 3

ABCA	TRAIT	EBV	TOP%
	GL	-0.3	65%
	BW	0.8	70%
	200D	13	40%
	400D	27	35%
	600D	37	20%
	MCW	47	9%
	Milk	-2	45%
	SS	1.9	15%
	CW	17	25%
	EMA	0.6	75%
	RIB	0.1	55%
	RUMP	0.2	50%
	RBY	0.3	55%
	IMF	0.1	70%

STEER INDEX
EXP \$29 25%
DOM \$36 15%

SEMEN	MOTILITY	MORPH
	✓	✓
DNA	PV	PV
	POLL	PcPc
	COAT	ED/ED



Bimbadeen

VOLTAIRE V247 (PP)

SINGLETARY OF BRINKS 675R (PP)

BIMBADEEN Q LITCHFIELD L12 (PP) (ET)

TELPARA HILLS MISS SUNDANCE 541D6 (P)(ET)

S. **BIMBADEEN Q SORRENTO S170 (PP)**

BONOX 474 (P)

BIMBADEEN Q H114 (P)

BIMBADEEN Q E0020 (P)

MC X FACTOR 889X34 (P)

BIMBADEEN Q NASHVILLE (PP) (AI)

BIMBADEEN Q K10 (P)

D. **BIMBADEEN Q R32 (PP)**

OAKLANDS AMBASSADOR (PP) (ET)

BIMBADEEN Q M9 (P)

BIMBADEEN Q G159 (P)

VOLTAIRE is an easy doing type and offers an INCREDIBLY kind nature. He has a great balance of EBVs, showing strong weights, top 25% EMA with good fats (top 20%) alongside outstanding fertility results.

VIDEO LINK DAM'S HISTORY: M f



PURCHASER:

\$

40
REGISTERED

Ident. BIM23RV247
DOB. 6/11/2023
% BI. 40.7
Gens. 3

ABCA	TRAIT	EBV	TOP%
	GL	0.7	91%
	BW	1	75%
	200D	9	60%
	400D	25	40%
	600D	30	35%
	MCW	28	35%
	Milk	-1	35%
	SS	2.2	9%
	CW	16	30%
	EMA	2.1	25%
	RIB	0.8	20%
	RUMP	1	20%
	RBY	0.2	65%
	IMF	0.5	25%

STEER INDEX
EXP \$25 35%
DOM \$30 25%

SEMEN	MOTILITY	MORPH
	✓	✓
DNA	PV	PV
	POLL	PcPc
	COAT	ED/ED



Bimbadeen

VISCOUNT V507 (PP)

SINGLETARY OF BRINKS 675R (PP)
BIMBADEEN Q LITCHFIELD L12 (PP) (ET)
TELPAH HILLS MISS SUNDANCE 541D6 (P)(ET)

S. **BIMBADEEN Q SORRENTO S170 (PP)**

BONOX 474 (P)

BIMBADEEN Q H114 (P)

BIMBADEEN Q E0020 (P)

BIMBADEEN Q KAKADU (P)

BIMBADEEN Q NULLABOR N78 (PP)

BIMBADEEN Q G0200 (P)

D. **BIMBADEEN Q R159 (PP)**

TELPAH HILLS MUNDINE 820J2 (PP) (AI)

BIMBADEEN Q N107 (P)

BIMBADEEN Q G230 (P)

An upstanding Sorrento son and first calf for his dam R159, VISCOUNT offers strong 400 & 600dw EBVs with strong morph results.

VIDEO LINK DAM'S HISTORY: M



PURCHASER:

\$

41
REGISTERED

Ident. BIM23RV507
DOB. 27/11/2023
% BI. 40.8
Gens. 3

ABCA	TRAIT	EBV	TOP%
	GL	1.1	97%
	BW	2.3	93%
	200D	10	55%
	400D	20	55%
	600D	31	30%
	MCW	38	20%
	Milk	-2	45%
	SS	0.6	50%
	CW	12	55%
	EMA	0.1	90%
	RIB	-1.1	92%
	RUMP	-1.4	92%
	RBV	0.5	40%
	IMF	0.2	60%

STEER INDEX
EXP \$14 75%
DOM \$19 60%

SEMEN	MOTILITY	MORPH
	✓	✓
DNA	PV	PV
	POLL	PcPc
	COAT	ED/ED



Bimbadeen

VIKING V506 (PP)

SINGLETARY OF BRINKS 675R (PP)
BIMBADEEN Q LITCHFIELD L12 (PP) (ET)
TELPAH HILLS MISS SUNDANCE 541D6 (P)(ET)

S. **BIMBADEEN Q SORRENTO S170 (PP)**

BONOX 474 (P)

BIMBADEEN Q H114 (P)

BIMBADEEN Q E0020 (P)

CB HOMBRE 541T3 (PP)

TELPAH HILLS JACKMAN 541H17 (PP) (ET)

TELPAH HILLS MISS SINGLETARY 541E (P)(ET)

D. **BIMBADEEN Q R33 (PP)**

BIMBADEEN Q H1 (P) (ET)

BIMBADEEN Q L17 (P)

BIMBADEEN Q D0135 (PP)

Mark this guy down - VIKING is a really stylish Sorrento son with a beautiful head, shape and balance. Lovely nature & excellent fertility indicators. First calf for his dam.

VIDEO LINK DAM'S HISTORY: M



PURCHASER:

\$

42
REGISTERED

Ident. BIM23RV506
DOB. 20/11/2023
% BI. 39.6
Gens. 3

ABCA	TRAIT	EBV	TOP%
	GL	0.6	90%
	BW	0.7	70%
	200D	10	55%
	400D	24	45%
	600D	20	60%
	MCW	12	70%
	Milk	-1	35%
	SS	1.8	20%
	CW	9	70%
	EMA	-1.5	99%
	RIB	-1	91%
	RUMP	-1.2	90%
	RBV	0.1	75%
	IMF	0.1	70%

STEER INDEX
EXP \$17 65%
DOM \$14 80%

SEMEN	MOTILITY	MORPH
	✓	✓
DNA	PV	PV
	POLL	PcPc
	COAT	ED/ED

Bimbadeen VALENS V250 ^(P)

S. BRANGUS BULL (P)

D. BIMBADEEN Q S181 (P)

WASHINGTON OF BRINKS 302S47 (P)
BIMBADEEN K300 (PP) (ET)
 MS BRINKS TRACKER 302R38 (P)
 BIMBADEEN Q E548 (P)
BIMBADEEN Q L72 (P)
 BIMBADEEN Q Q111 (P)

First calf for his dam, S181, VALENS is a super deep, soft young bull with easy doing EBV traits suitable for heifers.

VIDEO LINK



DAM'S HISTORY:

M

SEMEN	MOTILITY	MORPH
	✓	✓
DNA	PV	HPc
	POLL	ED/ED
	COAT	

PURCHASER:

\$

43 ENROLLED

Ident. BIM23EV250
 DOB. 6/11/2023
 % BI. 47.3%
 Gens. 3

TRAIT	EBV	TOP%
GL	0	75%
BW	-1.7	8%
200D	1	90%
400D	4	94%
600D	-6	98%
MCW	-12	97%
Milk	-6	90%
SS	1	40%
CW	0	98%
EMA	1	65%
RIB	0.5	35%
RUMP	0.5	35%
RBV	0.4	50%
IMF	-0.3	96%

STEER INDEX	EXP	DOM
	\$10	90%
	\$9	90%

Bimbadeen VORACIOUS V143 ^(PP)

S. TRIPLE B NOBLE N405 (PP)

SUHN'S NEXT STEP 331R7 (P)
TRIPLE B JASPER J531 (PP) (ET)
 TRIPLE B MADDISON D176 (PP)
 YABBA-DO D43 (P) (ET)
TRIPLE B CORDELIA K23 (P)
 TRIPLE B CORDELIA E275 (P)

D. BIMBADEEN Q R205 (PP)

MC X FACTOR 889X34 (P)
BIMBADEEN Q NASHVILLE (PP) (AI)
 BIMBADEEN Q K10 (P)
 BIMBADEEN Q GRAPHITE (PP)
BIMBADEEN Q M99 (P)
 BIMBADEEN Q E11 (P)

Noble son with strong milk, fertility and fats EBVS (to be updated in August BREEDPLAN run).

VIDEO LINK



DAM'S HISTORY:

m M

SEMEN	MOTILITY	MORPH
	✓	Q
DNA	PV	VS
	POLL	PcPc
	COAT	ED/ED

PURCHASER:

\$

44 REGISTERED

Ident. BIM23RV143
 DOB. 16/10/2023
 % BI. 45.2%
 Gens. 3

TRAIT	EBV	TOP%
GL	-0.9	45%
BW	-0.7	30%
200D	11	50%
400D	24	45%
600D	22	50%
MCW	14	65%
Milk	0	20%
SS	1.5	25%
CW	12	55%
EMA	-0.5	96%
RIB	0.3	45%
RUMP	0.3	45%
RBV	0	80%
IMF	0.2	60%

STEER INDEX	EXP	DOM
	\$25	35%
	\$25	40%

Bimbadeen VERBATIM V251 ^(PP)

S. TRIPLE B NOBLE N405 (PP)

SUHN'S NEXT STEP 331R7 (P)
TRIPLE B JASPER J531 (PP) (ET)
 TRIPLE B MADDISON D176 (PP)
 YABBA-DO D43 (P) (ET)
TRIPLE B CORDELIA K23 (P)
 TRIPLE B CORDELIA E275 (P)

D. BIMBADEEN SERENA S62 (PP)

BINDAREE CRAFTSMAN C432 (P)
FOREST HILLS FAIR DINKUM 1168 (PP)
 FOREST HILLS DARLA 723 (P)
 TELPARA HILLS MUNDINE 820J2 (PP) (AI)
BIMBADEEN Q P97 (PP)
 BIMBADEEN Q G89 (P)

Good stylish heifer bull with strong fertility markers and morph results.

VIDEO LINK



DAM'S HISTORY:

s M

SEMEN	MOTILITY	MORPH
	✓	✓
DNA	PV	VS
	POLL	PcPc
	COAT	ED/ED

PURCHASER:

\$

45 REGISTERED

Ident. BIM23RV251
 DOB. 25/11/2023
 % BI. 44.7%
 Gens. 3

TRAIT	EBV	TOP%
GL	-0.8	45%
BW	-0.6	30%
200D	7	70%
400D	23	45%
600D	18	65%
MCW	12	70%
Milk	-3	60%
SS	3.6	1%
CW	8	75%
EMA	-0.8	97%
RIB	-0.9	90%
RUMP	-1.1	90%
RBV	0.4	50%
IMF	-0.2	92%

STEER INDEX	EXP	DOM
	\$27	30%
	\$27	35%

Bimbadeen VANCE V154 ^(P)

S. BIMBADEEN TEXAS T163 (PP)

OAKLANDS AMBASSADOR (PP) (ET)
BIMBADEEN Q PILOT P33 (PP)
 BIMBADEEN Q G159 (P)
 BIMBADEEN Q GRAPHITE (PP)
BIMBADEEN Q K44 (P)
 BIMBADEEN Q E29 (P)

D. BIMBADEEN Q K44 (P)

RUSHTON CSONKA'S FORTUNE (P) (ET)
BIMBADEEN Q GRAPHITE (PP)
 BIMBADEEN Q D0314 (P)
 GREENDALE TRACTION (P)
BIMBADEEN Q E29 (P)
 BIMBADEEN Q J115 (P)

Very fertile higher bos indicus content type with strong weight EBVs - suited to a commercial operation.

VIDEO LINK



DAM'S HISTORY:

s f M f m M M M m

SEMEN	MOTILITY	MORPH
	✓	✓
DNA	PV	VS
	POLL	HPc
	COAT	ED/ED

PURCHASER:

\$

46 REGISTERED

Ident. BIM23RV154
 DOB. 9/10/2023
 % BI. 46.8%
 Gens. 2

TRAIT	EBV	TOP%
GL	-0.1	70%
BW	1.3	80%
200D	17	25%
400D	33	20%
600D	40	20%
MCW	45	10%
Milk	0	20%
SS	0.1	70%
CW	23	8%
EMA	2.1	25%
RIB	0	60%
RUMP	0	55%
RBV	0.6	35%
IMF	0.4	35%

STEER INDEX	EXP	DOM
	\$30	20%
	\$32	20%



SALE BULLS ENJOYING THEIR SILAGE MIX

Bimbadeen J VERIFIED 023 (PP)

NEW VISION OF SALACOA 209Y2 (PP) (AI)
HOLLYWOOD OF SALACOA 23A53 (PP)
MS SVF PATTON 23Y66 (P)

S. STOCKYARD P26 (PP) (ET)
BELVIEW WARRIGAL (P)
BELVIEW ABBA (P)
BELVIEW SKYE (P)

CSONKA OF BRINKS 30R4 (PP)
OAKLANDS AMBASSADOR (PP) (ET)
MISS BRINKS SUNDANCE 392L (P)

D. BIMBADEEN Q P0158 (PP)
BIMBADEEN Q GRAPHITE (PP)
BIMBADEEN Q K25 (P)
BIMBADEEN Q G116 (P)

The only Stockyard P26 son to be offered in the catalogue, out of a lovely Oaklands Ambassador female. This framey young bull had an early set-back and is coming on well as sale day approaches.

VIDEO LINK DAM'S HISTORY: f M f



PURCHASER:

\$

47
REGISTERED

Ident. JAK23R023
DOB. 21/10/2023
% BI. 44.5%
Gens. 3

ABCA

TRAIT EBV TOP%

GL 0.6 90%
BW -1.3 15%
200D 1 90%
400D 12 80%
600D 7 85%
MCW 10 75%
Milk -8 98%
SS -0.2 80%
CW 7 80%
EMA 0.3 85%
RIB -0.7 85%
RUMP -0.9 85%
RBY 0.3 55%
IMF 0.2 60%

BREEDPLAN EBVs

STEER INDEX

EXP \$12 80%
DOM \$11 85%

SEMEN MOTILITY MORPH

DNA PV PV
POLL PcPc
COAT ED/ED



Bimbadeen VALEDICTORY V102 (PP)

CSONKA OF BRINKS 30R4 (PP)
TELPAH HILLS MUNDINE 820J2 (PP) (AI)
TELPAH HILLS MISS L11 820D4 (PP)
SUHN'S NEXT STEP 331R7 (P)
BIMBADEEN Q M138 (P) (ET)
TELPAH HILLS MISS CSONKA 541H (P)(ET)

S. BIMBADEEN Q QANTAS Q137 (PP)

CSONKA OF BRINKS 30R4 (PP)
OAKLANDS GERONIMO (PP) (ET)
KENROL LADY ESTO 0345 (P)

D. BIMBADEEN Q Q171 (PP) (AI)
BIMBADEEN Q GRAPHITE (PP)
BIMBADEEN Q M125 (P)
BIMBADEEN Q H114 (P)

The final natural-mated Qantas son ever to be offered by Bimbadeen, VALEDICTORY is a BIG weight, fertility, EMA bull with cracking steer indexes. Like his sire, he has a brilliant temperament.

VIDEO LINK DAM'S HISTORY: m s M M



PURCHASER:

\$

48
REGISTERED

Ident. BIM23RV102
DOB. 30/10/2023
% BI. 47.1
Gens. 2

ABCA

TRAIT EBV TOP%

GL -0.7 50%
BW 1.5 85%
200D 21 15%
400D 39 10%
600D 51 6%
MCW 57 4%
Milk 2 6%
SS 2.2 9%
CW 26 4%
EMA 1.9 30%
RIB -0.9 90%
RUMP -1 90%
RBY 1.1 15%
IMF 0.2 60%

BREEDPLAN EBVs

STEER INDEX

EXP \$37 7%
DOM \$43 4%

SEMEN MOTILITY MORPH

DNA PV PV
POLL PcPc
COAT ED/E+



Bimbadeen VIVALDI V275 (PP)

S. **BRANGUS BULL (P)**

D. **BIMBADEEN Q S4 (PP)**

TRIPLE B JASPER J531 (PP) (ET)
TRIPLE B NOBLE N405 (PP)
 TRIPLE B CORDELIA K23 (P)
 WASHINGTON OF BRINKS 302S47 (P)
BIMBADEEN Q P0114 (PP) (AI)
 BIMBADEEN Q L17 (P)

VIVALDI is a very slick, stylish and correct young bull with a great Brangus head with hooded eye. First calf for his striking dam Bimbadeen S4.

VIDEO LINK **DAM'S HISTORY:** M f



PURCHASER:

\$

49
ENROLLED

Ident. BIM23EV275
 DOB. 14/11/2023
 % BI. 45.9
 Gens. 3

ABCA	TRAIT	EBV	TOP%
	GL	-0.4	60%
	BW	-2.4	3%
	200D	1	90%
	400D	6	91%
	600D	-5	98%
	MCW	-10	96%
	Milk	-6	90%
	SS	0.8	45%
	CW	2	95%
	EMA	0.4	80%
	RIB	0.5	35%
	RUMP	0.6	35%
	RBV	0	80%
	IMF	0.2	60%

BREEDPLAN EBVs	STEER INDEX	EXP	DOM
		\$10	90%
		\$8	92%

SEMEN	MOTILITY	MORPH
	✓	✓
DNA	PV	DV
	POLL	PcPc
	COAT	ED/ED



Bimbadeen VINDICATE V155 (PP)

S. **TRIPLE B NOBLE N405 (PP)**

D. **BIMBADEEN Q M99 (P)**

SUHN'S NEXT STEP 331R7 (P)
TRIPLE B JASPER J531 (PP) (ET)
 TRIPLE B MADDISON D176 (PP)
 YABBA-DO D43 (P) (ET)
TRIPLE B CORDELIA K23 (P)
 TRIPLE B CORDELIA E275 (P)
 RUSHTON CSONKA'S FORTUNE (P) (ET)
BIMBADEEN Q GRAPHITE (PP)
 BIMBADEEN Q D0314 (P)
 GREENDALE TRACTION (P)
BIMBADEEN Q E11 (P)
 BIMBADEEN Q PRUDENCE P65 (P)

Finishing the black bulls with a lovely young Noble bull - VINDICATE has loads of style, depth and strong hindquarter with great fertility indicators and excellent semen results.

VIDEO LINK **DAM'S HISTORY:** s f M f s M m



PURCHASER:

\$

50
REGISTERED

Ident. BIM23RV155
 DOB. 25/09/2023
 % BI. 46.9
 Gens. 2

ABCA	TRAIT	EBV	TOP%
	GL	-0.1	70%
	BW	0.6	65%
	200D	13	40%
	400D	25	40%
	600D	23	50%
	MCW	28	35%
	Milk	-4	75%
	SS	1.4	30%
	CW	10	65%
	EMA	-1	98%
	RIB	0	60%
	RUMP	0.1	55%
	RBV	-0.1	85%
	IMF	0	80%

BREEDPLAN EBVs	STEER INDEX	EXP	DOM
		\$22	45%
		\$21	55%

SEMEN	MOTILITY	MORPH
	✓	✓
DNA	PV	VS
	POLL	PcPc
	COAT	ED/E+



Bimbadeen
VALERO V335 (PP)

- S. **TANNYFOIL MAVERICK (PP)**
DUARRAN BERESFORD (P)
DUARRAN FLINDERS 50% ** (P)
DUARRAN INDINA A888 (P)
DUARRAN EDDIE (P)
TANNYFOIL GLENLEIGH (P)
TANNYFOIL B76 (P)
- D. **BIMBADEEN Q J315 (P)**
BIMBADEEN Q F1 (P) (ET)
HUONFELS JACOB RIO (S) (AI)
WATERFRONT X159 (P)
BRANGUS BULL B62A38 (P)
BRANGUS COW (P)

RED BULL: Terrific bone and beautiful Brangus style sire's head with great muzzle. Offers good fertility indicators and EBVs suggest big EMA and yield potential. (Honey red)

VIDEO LINK DAM'S HISTORY: c f M m



PURCHASER:

\$

51
REGISTERED

Ident. BIM23RV335
DOB. 2/10/2023
% BI. 53.4
Gens. 1

BREEDPLAN EBVs	GL	1.7	99%
	BW	-0.2	45%
	200D	0	93%
	400D	12	80%
	600D	14	75%
	MCW	23	45%
	Milk	-5	85%
	SS	1.6	25%
	CW	11	60%
	EMA	2.5	15%
STEER INDEX	RIB	-0.6	85%
	RUMP	-0.7	80%
	RBV	1.1	15%
	IMF	-0.1	90%
	EXP	\$19	55%

SEMEN	MOTILITY	MORPH
	✓	✓
	PV	PV
	POLL	PcPc
DNA	COAT	e/e

Bimbadeen
VITALIS V354 (PP)

- S. **TANNYFOIL MAVERICK (PP)**
DUARRAN BERESFORD (P)
DUARRAN FLINDERS 50% ** (P)
DUARRAN INDINA A888 (P)
DUARRAN EDDIE (P)
TANNYFOIL GLENLEIGH (P)
TANNYFOIL B76 (P)
- D. **BIMBADEEN Q H342 (P)**
BIMBADEEN Q DUARRAN FERRIS (P)
BIMBADEEN Q L255 (P)
BIMBADEEN Q F138 (P)

RED BULL: A very tidy, neatly made honey red bull with a strong fertility, EMA & fats EBVs, Good nature.

VIDEO LINK



DAM'S HISTORY:
f c f c f c f f m M

PURCHASER:

SEMEN	MOTILITY	MORPH
	✓	Q
	PV	VS
	POLL	PcPc
DNA	COAT	e/e

\$

Bimbadeen
VIRTUE V323 (PP)

- S. **TANNYFOIL MAVERICK (PP)**
DUARRAN BERESFORD (P)
DUARRAN FLINDERS 50% ** (P)
DUARRAN INDINA A888 (P)
DUARRAN EDDIE (P)
TANNYFOIL GLENLEIGH (P)
TANNYFOIL B76 (P)
- D. **BIMBADEEN Q P0199 (P)**
BIMBADEEN Q F349 (P)
CX HOME RUN 135/P (P)
DOONSIDE FRANCHISE 1938 (PP) (AI)
DOONSIDE 4941 (P)
DOONSIDE 553 (P) (AI)
BIMBADEEN Q R132 (P)

RED BULL: A lovely dark red young bull with strong red Brangus cred - Doonside 553 & Franchise both top reds sires. Good fertility & fats EBVs.

VIDEO LINK



DAM'S HISTORY:
f M m M f

PURCHASER:

SEMEN	MOTILITY	MORPH
	✓	✓
	PV	VS
	POLL	PcPc
DNA	COAT	e/e

\$

52
REGISTERED

Ident. BIM23RV354
DOB. 9/10/2023
% BI. 56.5%
Gens. 2

BREEDPLAN EBVs	GL	1.4	99%
	BW	-0.2	45%
	200D	2	90%
	400D	10	85%
	600D	14	75%
	MCW	24	45%
	Milk	-2	45%
	SS	1.4	30%
	CW	9	70%
	EMA	1.2	55%
STEER INDEX	RIB	0.1	55%
	RUMP	0.2	50%
	RBV	0.5	40%
	IMF	-0.2	92%
	EXP	\$16	70%

Ident. BIM23RV323
DOB. 23/10/2023
% BI. 51.3%
Gens. 3

BREEDPLAN EBVs	GL	0.9	94%
	BW	-1.7	8%
	200D	-3	98%
	400D	3	95%
	600D	6	90%
	MCW	13	70%
	Milk	-4	75%
	SS	1.5	25%
	CW	5	90%
	EMA	1	65%
STEER INDEX	RIB	0.8	20%
	RUMP	1.1	20%
	RBV	0.1	75%
	IMF	-0.1	90%
	EXP	\$14	75%



Bimbadeen

VERSE V336 (PP)

DUARRAN BERESFORD (P)
DUARRAN FLINDERS 50% ** (P)
 DUARRAN INDINA A888 (P)
 S. **TANNYFOIL MAVERICK (PP)**
 DUARRAN EDDIE (P)
TANNYFOIL GLENLEIGH (P)
 TANNYFOIL B76 (P)

BRANGUS BULL B62A38 (P)

D. **BIMBADEEN Q J5 (P)**

BRANGUS COW (P)

RED BULL: A lovely darker red young bull with polled Brangus style out of one of our longest serving red dams, J5. EBVs suggest strong fertility and retail beef yield EBVs.

VIDEO LINK **DAM'S HISTORY:** m M m f c M m M m



PURCHASED BY:

\$ \$

54
REGISTERED

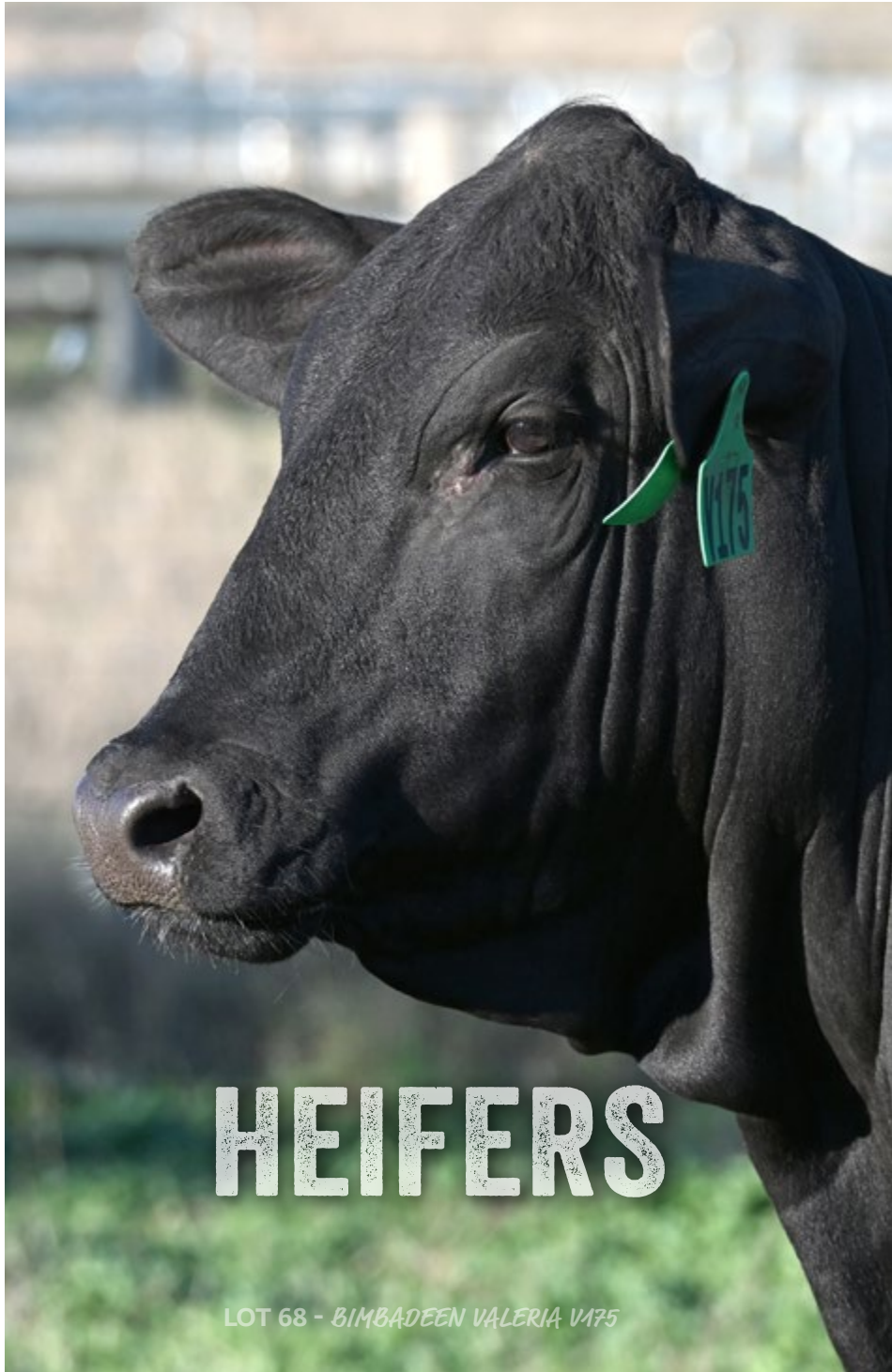
Ident. BIM23FV336
 DOB. 25/09/2023
 % BI. 54.9
 Gens.

BREEDPLAN EBVS	TRAIT EBV TOP%		
	GL	1.3	98%
	BW	0.5	65%
	200D	4	80%
	400D	18	60%
	600D	23	50%
	MCW	39	20%
	Milk	-6	90%
	SS	2.3	7%
	CW	12	55%
	EMA	1.3	50%
	RIB	-0.9	90%
	RUMP	-1.1	90%
	RBY	0.9	20%
	IMF	-0.2	92%

STEER INDEX
 EXP \$23 40%
 DOM \$29 25%

SEMEN MOTILITY MORPH
 ✓ ✓

DNA PV VS
 POLL PcPc
 COAT E+/e



HEIFERS

LOT 68 - BIMBADEEN VALERIA 1475



Bimbadeen

VILA V306 (PP)

SINGLETARY OF BRINKS 675R (PP)
BIMBADEEN Q LITCHFIELD L12 (PP) (ET)
TELPAH HILLS MISS SUNDANCE 541D6 (P)(ET)

S. **BIMBADEEN Q SORRENTO S170 (PP)**

BONOX 474 (P)

BIMBADEEN Q H114 (P)

BIMBADEEN Q E0020 (P)

BIMBADEEN Q KAKADU (P)

BIMBADEEN Q NULLABOR N78 (PP)

BIMBADEEN Q G0200 (P)

D. **BIMBADEEN Q R174 (PP)**

BIMBADEEN Q KOSCIUSZKO (PP)

BIMBADEEN Q N145 (P)

BIMBADEEN Q J173 (P)

Just a beautiful Brangus female - strong but feminine head, perfect balance of skin and underline. VILA offers strong weight + IMF EBVs. DBA shows homozygous poll and black coat.

VIDEO LINK DAM'S HISTORY: c F



PURCHASER:

\$

60
REGISTERED

Ident. BIM23RV306
DOB. 20/11/2023
% BI. 42.4
Gens. 3

ABCA TRAIT EBV TOP%

GL	0.9	94%
BW	1.6	90%
200D	12	45%
400D	23	45%
600D	31	30%
MCW	37	20%
Milk	-2	45%
SS	0.9	40%
CW	15	35%
EMA	0.5	80%
RIB	-0.3	70%
RUMP	-0.3	70%
RBY	0.2	65%
IMF	0.4	35%

BREEDPLAN EBVs

STEER INDEX
EXP \$18 60%
DOM \$22 50%

DNA PV PV
POLL PcPc
COAT ED/ED



Bimbadeen

VIENNA V033 (PP)

CSONKA OF BRINKS 30R4 (PP)
OAKLANDS AMBASSADOR (PP) (ET)
MISS BRINKS SUNDANCE 392L (P)

S. **BIMBADEEN Q MEMPHIS (PP)**

DOONSIDE BB176-01 (P) (AI)

BIMBADEEN Q D0135 (PP)

BIMBADEEN Q P033 (P)

CSONKA OF BRINKS 30R4 (PP)

OAKLANDS AMBASSADOR (PP) (ET)

MISS BRINKS SUNDANCE 392L (P)

D. **BIMBADEEN Q M36 (P)**

GREENDALE Y181 (P)

BIMBADEEN Q G0200 (P)

BIMBADEEN Q Q019 (P)

Stylish Memphis heifer with Csonka on both sides of her pedigree. A great dash of Greendale in her damline from a super fertile cow. EBVs show outstanding IMF, weights, GL and positive fertility & fats.

VIDEO LINK DAM'S HISTORY: f f M M f F m



PURCHASER:

\$

61
REGISTERED

Ident. BIM23RV033
DOB. 13/11/2023
% BI. 42.4
Gens. 2

ABCA TRAIT EBV TOP%

GL	-1.7	25%
BW	1.4	85%
200D	24	6%
400D	38	15%
600D	46	9%
MCW	48	8%
Milk	0	20%
SS	1.1	35%
CW	22	10%
EMA	1	65%
RIB	0.4	40%
RUMP	0.5	35%
RBY	0	80%
IMF	0.7	9%

BREEDPLAN EBVs

STEER INDEX
EXP \$35 9%
DOM \$38 9%

DNA PV VS
POLL PcPc
COAT ED/ED



Bimbaddeen

VAMP V026 (P)

CSONKA OF BRINKS 30R4 (PP)
OAKLANDS AMBASSADOR (PP) (ET)
MISS BRINKS SUNDANCE 392L (P)

S. BIMBADEEN Q MEMPHIS (PP)

DOONSIDE BB176-01 (P) (AI)
BIMBADEEN Q D0135 (PP)
BIMBADEEN Q P033 (P)

D. BIMBADEEN Q NIGELLA (P)

CB HOMBRE 541T3 (PP)
TELPAH HILLS JACKMAN 541H17 (PP) (ET)
TELPAH HILLS MISS SINGLETARY 541E (P)(ET)
GREENDALE URANIA (P)
BIMBADEEN Q R608 (P)
BIMBADEEN Q K119 (P)

A lovely Memphis female out of a stylish, consistent cow. VAMP reads very well through her EBVs with excellent MILK and fertility measures. Top 25% for her indexes.

VIDEO LINK **DAM'S HISTORY:** m f M m F f



PURCHASER: \$

62
REGISTERED

Ident. BIM23RV026
DOB. 30/10/2023
% BI. 44.8
Gens. 2

ABCA	TRAIT	EBV	TOP%
	GL	-0.9	45%
	BW	0.3	60%
	200D	16	30%
	400D	32	25%
	600D	30	35%
	MCW	18	55%
	Milk	1	15%
	SS	1.7	20%
	CW	18	25%
	EMA	1.4	50%
	RIB	0.3	45%
	RUMP	0.4	40%
	RBV	0.4	50%
	IMF	0.3	45%

STEER INDEX
EXP \$30 20%
DOM \$29 25%

DNA PV VS
POLL HPc
COAT ED/E+



Bimbaddeen

VIOLA V047 (P)

CSONKA OF BRINKS 30R4 (PP)
OAKLANDS AMBASSADOR (PP) (ET)
MISS BRINKS SUNDANCE 392L (P)

S. BIMBADEEN Q MEMPHIS (PP)

DOONSIDE BB176-01 (P) (AI)
BIMBADEEN Q D0135 (PP)
BIMBADEEN Q P033 (P)

BRANGUS BULL B75A25 (P)

D. BIMBADEEN Q J198 (P)

BRANGUS COW (P)

From super-fertile parents and the 9th calf for her amazing dam, J198, VIOLA offers a beautiful poll, very strong weight and yield EBVs with superb EMA predicted towards her influence over her progeny.

VIDEO LINK **DAM'S HISTORY:** c c f f f M f f F m



PURCHASER: \$

63
REGISTERED

Ident. BIM23FV047
DOB. 2/10/2023
% BI. 53.1
Gens.

ABCA	TRAIT	EBV	TOP%
	GL	0.9	94%
	BW	2.2	92%
	200D	18	20%
	400D	33	20%
	600D	35	25%
	MCW	35	25%
	Milk	-3	60%
	SS	0.3	60%
	CW	22	10%
	EMA	3.5	3%
	RIB	-0.2	70%
	RUMP	-0.1	60%
	RBV	1.1	15%
	IMF	0.2	60%

STEER INDEX
EXP \$27 30%
DOM \$27 35%

DNA PV VS
POLL HPc
COAT ED/ED



Bimbadeen

VOGUE V211 (P)

- OAKLANDS AMBASSADOR (PP) (ET)
BIMBADEEN Q MAVERICK (PP)
 BIMBADEEN Q R22 (PP)
 S. **GINOONDAN DRUMMOND (PP)**
 GINOONDAN KINSEY 175 (P)
GINOONDAN 264 (P)
 GINOONDAN 153 (P)
-
- CSONKA OF BRINKS 30R4 (PP)
TELPARA HILLS MUNDINE 820J2 (PP) (AI)
 TELPARA HILLS MISS L11 820D4 (PP)
 D. **BIMBADEEN Q P0103 (P)**
 GREENDALE Y0035 (P)
BIMBADEEN Q E28 (P)
 BIMBADEEN Q L91 (P)

A great cocktail of genetics here with some very strong Australian bloodlines in the background with Greendale & TH Mundine influencing the damline. EBVs predict good early weights with great EMA & terrific fats.

VIDEO LINK **DAM'S HISTORY:** f f f F m



PURCHASER:

\$

64
 REGISTERED

Ident. BIM23RV211
 DOB. 16/10/2023
 % BI. 43.9
 Gens. 2

ABCA	TRAIT	EBV	TOP%
	GL	0	75%
	BW	0.7	70%
	200D	15	30%
	400D	21	50%
	600D	21	55%
	MCW	11	70%
	Milk	0	20%
	SS	0.8	45%
	CW	13	50%
	EMA	2.4	15%
	RIB	1.5	6%
	RUMP	1.9	6%
	RBV	0.5	40%
	IMF	0.2	60%

STEER INDEX
 EXP \$20 55%
 DOM \$21 55%

DNA PV PV
 POLL HPc
 COAT ED/ED



Bimbadeen

VENUS V222 (PP)

- OAKLANDS AMBASSADOR (PP) (ET)
BIMBADEEN Q MAVERICK (PP)
 BIMBADEEN Q R22 (PP)
 S. **GINOONDAN DRUMMOND (PP)**
 GINOONDAN KINSEY 175 (P)
GINOONDAN 264 (P)
 GINOONDAN 153 (P)
-
- SINGLETARY OF BRINKS 675R (PP)
BIMBADEEN Q LITCHFIELD L12 (PP) (ET)
 TELPARA HILLS MISS SUNDANCE 541D6 (P)(ET)
 D. **BIMBADEEN Q P0154 (PP)**
 BONOX 505 (P)
BIMBADEEN Q K120 (P)
 BIMBADEEN Q R62 (P)

Such a stylish heifer with a beautiful feminine presence, terrific length, good depth to her flank and smooth easy movement. VENUS is another Drummond female with a silky coat & strong bone. Good weight/fat EBVs

VIDEO LINK **DAM'S HISTORY:** m M m F m



PURCHASER:

\$

65
 REGISTERED

Ident. BIM23RV222
 DOB. 2/10/2023
 % BI. 44.4
 Gens. 3

ABCA	TRAIT	EBV	TOP%
	GL	0	75%
	BW	1.1	80%
	200D	17	25%
	400D	26	35%
	600D	26	45%
	MCW	20	50%
	Milk	0	20%
	SS	-0.9	93%
	CW	15	35%
	EMA	0.7	75%
	RIB	0.8	20%
	RUMP	1	20%
	RBV	0.1	75%
	IMF	0.2	60%

STEER INDEX
 EXP \$18 60%
 DOM \$16 75%

DNA PV PV
 POLL PcPc
 COAT ED/ED



Bimbadeen

VELVET V078 (PP)

LEAD GUN OF BRINKS 222K14 (P)
WASHINGTON OF BRINKS 302S47 (P)
 MS BRINKS BRIGHT SIDE 302L9 (P)
 S. **BIMBADEEN K300 (PP) (ET)**
 TRACKER OF BRINKS 541M8 (P) (AI)
MS BRINKS TRACKER 302R38 (P)
 MISS BRINKS CHALLENGER 302G3 (P) (AI)

BONOX 368 (P)
BONOX 505 (P)
 BONOX B211 (P)

D. **BIMBADEEN Q L110 (P)**
 GREENDALE TRACTION (P)
BIMBADEEN Q E0137 (P)
 BIMBADEEN Q L196 (P)

FERTILITY and longevity are strongly indicated in VELVET's parentage, with sire 10 yo and dam 9 yo at conception. EBVs predict her genetics will offer terrific EMA and retail beef yield traits.

VIDEO LINK DAM'S HISTORY: M M M m M f F f



PURCHASER:

\$

66
 REGISTERED

Ident. BIM23RV078
 DOB. 9/10/2023
 % BI. 42.1
 Gens. 2

	TRAIT	EBV	TOP%
	GL	0.5	90%
	BW	-1.3	15%
	200D	3	85%
	400D	12	80%
	600D	-1	95%
	MCW	-13	97%
	Milk	-4	75%
	SS	0.6	50%
	CW	7	80%
	EMA	2.9	7%
	RIB	0.1	55%
	RUMP	0	55%
	RBY	1	15%
	IMF	0.1	70%

STEER INDEX
 EXP \$14 75%
 DOM \$10 90%

DNA
 PV VS
 POLL PcPc
 COAT ED/e



Bimbadeen

VESPER V081 (PP)

LEAD GUN OF BRINKS 222K14 (P)
WASHINGTON OF BRINKS 302S47 (P)
 MS BRINKS BRIGHT SIDE 302L9 (P)
 S. **BIMBADEEN K300 (PP) (ET)**
 TRACKER OF BRINKS 541M8 (P) (AI)
MS BRINKS TRACKER 302R38 (P)
 MISS BRINKS CHALLENGER 302G3 (P) (AI)

DOONSIDE IRA HAYES (P) (AI)
BIMBADEEN Q KAKADU (P)
 BIMBADEEN Q Q105 (PP)

D. **BIMBADEEN Q N150 (P)**
 BONOX 505 (P)
BIMBADEEN Q K91 (P)
 BIMBADEEN Q M052 (P)

Very sweet female with a great Brangus head, lovely structure, flatback style and good width of pins. VESPER has a strong pedigree featuring fertility, longevity and a good mix of Australian and US bloodlines.

VIDEO LINK DAM'S HISTORY: M M m F F f



PURCHASER:

\$

67
 REGISTERED

Ident. BIM23RV081
 DOB. 16/10/2023
 % BI. 43.6
 Gens. 3

	TRAIT	EBV	TOP%
	GL	-0.3	65%
	BW	1.4	85%
	200D	15	30%
	400D	29	30%
	600D	30	35%
	MCW	28	35%
	Milk	-6	90%
	SS	0.8	45%
	CW	15	35%
	EMA	1.7	35%
	RIB	-1.1	92%
	RUMP	-1.5	93%
	RBY	1.2	9%
	IMF	-0.2	92%

STEER INDEX
 EXP \$26 30%
 DOM \$26 35%

DNA
 PV VS
 POLL PcPc
 COAT ED/ED



Bimbadeen

VALERIA V175 (PP)

SUHN'S NEXT STEP 331R7 (P)
TRIPLE B JASPER J531 (PP) (ET)
 TRIPLE B MADDISON D176 (PP)
 S. **TRIPLE B NOBLE N405 (PP)**
 YABBA-DO D43 (P) (ET)
TRIPLE B CORDELIA K23 (P)
 TRIPLE B CORDELIA E275 (P)

RUSHTON CSONKA'S FORTUNE (P) (ET)
BIMBADEEN Q GRAPHITE (PP)
 BIMBADEEN Q D0314 (P)
 D. **BIMBADEEN Q K36 (P)**
 DOONSIDE IRA HAYES (P) (AI)
BIMBADEEN Q G231 (P)
 BIMBADEEN Q Q143 (P)

VALERIA is a super feminine female with very strong indicators for very good weights, strong IMF and fertility. Dam is a very consistent producer. This heifer has loads of personality and investigative disposition!

VIDEO LINK DAM'S HISTORY: c M f c f c M F f



PURCHASER:

\$

68
 REGISTERED

Ident. BIM23RV175
 DOB. 2/10/2023
 % BI. 43.2
 Gens. 2

ABCA	TRAIT	EBV	TOP%
	GL	-0.3	65%
	BW	1.7	90%
	200D	20	15%
	400D	34	20%
	600D	37	20%
	MCW	32	30%
	Milk	-1	35%
	SS	1.7	20%
	CW	16	30%
	EMA	-1	98%
	RIB	-0.2	70%
	RUMP	-0.2	65%
	RBV	-0.1	85%
	IMF	0.4	35%

BREEDPLAN EBVs
 STEER INDEX
 EXP \$25 35%
 DOM \$25 40%

DNA
 PV VS
 POLL PcPc
 COAT ED/ED



Bimbadeen

VIXEN V293 (PP)

DOONSIDE IRA HAYES (P) (AI)
BIMBADEEN Q KAKADU (P)
 BIMBADEEN Q Q105 (PP)
 S. **BIMBADEEN Q NULLABOR N78 (PP)**
 GREENDALE Y181 (P)
BIMBADEEN Q G0200 (P)
 BIMBADEEN Q Q019 (P)

MC X FACTOR 889X34 (P)
BIMBADEEN Q NASHVILLE (PP) (AI)
 BIMBADEEN Q K10 (P)
 D. **BIMBADEEN Q S113 (P)**
 OAKLANDS AMBASSADOR (PP) (ET)
BIMBADEEN Q M25 (P)
 BIMBADEEN Q E0012 (P)

FEMININE with beautiful skin this female is our only Nullabor heifer in the sale (one of his last). Her dam's first calf, VIXEN offers good, consistent weights with very good fats & IMF EBVs. Homozygous poll and black coat.

VIDEO LINK DAM'S HISTORY: F



PURCHASER:

\$

69
 REGISTERED

Ident. BIM23RV293
 DOB. 23/10/2023
 % BI. 46.0
 Gens. 4

ABCA	TRAIT	EBV	TOP%
	GL	0.2	80%
	BW	0.8	70%
	200D	11	50%
	400D	24	45%
	600D	27	40%
	MCW	31	30%
	Milk	-4	75%
	SS	1.1	35%
	CW	13	50%
	EMA	0.6	75%
	RIB	0.8	20%
	RUMP	0.9	25%
	RBV	-0.1	85%
	IMF	0.5	25%

BREEDPLAN EBVs
 STEER INDEX
 EXP \$22 45%
 DOM \$25 40%

DNA
 PV VS
 POLL PcPc
 COAT ED/ED



Bimbadeen

VERONA V138 (P)

LEAD GUN OF BRINKS 222K14 (P)
CSONKA OF BRINKS 30R4 (PP)

S. **PALGROVE NITRO N250 (U) (PP) (AI)**
W C C SPECIAL DESIGN L309 (P)
STONE POINT YANKEE QUEEN B121 (P)
STONE POINT YANKEE QUEEN Y33 (P)

TRANSFORMER OF BRINKS (P) (ET)
DOONSIDE IRA HAYES (P) (AI)
DOONSIDE BB 3704-04 (P)

D. **BIMBADEEN Q G209 (P)**
GREENDALE URANIA (P)
BIMBADEEN Q R422 (P)
BIMBADEEN Q H211 (P)

VERONA is the only Palgrove Nitro N250 female in the sale & well worth final sale lot. Her super producing dam (check out the dam history) offers terrific genetics. EBVs reflect this special genetic mix: strong weights, fats + IMF.

VIDEO LINK DAM'S HISTORY: f f c c M f c m f F m



PURCHASER: \$

70
REGISTERED

ABCA Ident. BIM23FV138
DOB. 2/10/2023
% BI. 36.0
Gens.

	TRAIT	EBV	TOP%
	GL	-1.1	40%
	BW	2.4	94%
200D	22	10%	
400D	33	20%	
600D	37	20%	
MCW	33	25%	
Milk	1	15%	
SS	-0.2	80%	
CW	18	25%	
EMA	1.4	50%	
RIB	0.9	20%	
RUMP	1.1	20%	
RBV	0.1	75%	
IMF	0.6	15%	

BREEDPLAN EBVs
STEER INDEX
EXP \$23 40%
DOM \$23 45%

DNA PV VS
POLL HPc
COAT ED/ED

Notes



Sale Results

	SOLD	GROSS	TOP	AVERAGE
BULLS				
FEMALES				
TOTAL				

Acknowledgements

Events like our Sale and Open Day don't happen without a LOT of hard work - especially when establishing a new sale venue and holding two events in just over a fortnight!

A huge thanks to all our behind-the-scenes workers - from our family (especially Jack and Mark who have toiled on the sale area yards and shed groundwork while continuing to run the general business of Bimbadeen stud and commercial herds). We are grateful to the Robinson family for their kind for assistance and extend heartfelt gratitude to the Burnham & Muirhead families for support in lead-up the event days. So much welding, videoing, preparing animals, standing up bulls for inspection & ensuring everything goes smoothly.

We have some amazing specialists who work with us to maintain the health of our animals, semen testing, doing scans and providing nutrition advice, as well as assisting with the exhaustive preparation of this catalogue.

And of course, thank you to you, our clients. Thank you for making the effort to read, research and attend the 2025 Bimbadeen sale. We especially appreciate our many return clients whose support we never take for granted. We hope you all secure the lots you selected!

The businesses showcased on the following pages work closely with Bimbadeen to help us produce the quality studstock we strive to offer you, our buyers.
We thank them for their ongoing support.

DJ's

Steel & Concrete

We believe in teamwork
Proudly supporting Bimbadeen to get the job done

Servicing rural Queensland for over 30 years

MONTO • EIDSVOLD • BILOELA
4166 1747 4165 1762 4992 2197

djsteel.com.au



4TAGS

Fast search for anything..

www.4tags.com.au

We're here to help!



Every Brand • Expert Advice • Better Prices



4Tags • 4AgTech • 4Weighing • 4Fencing • 4AnimalHealth



Call or LiveChat online

1300 813 500



KELLCO.

RURAL AGENCIES

DALBY • WANDOAN • MONTTO • BILOELA

Providing exceptional customer service and delivering the best results

- Livestock Marketing
- Paddock to Paddock sales
- Direct consignment to feedlots and abattoirs
- Rural & Residential Real Estate
- Auctions Plus accredited
- EU accredited Montto Saleyards



www.kellco.com.au

A photograph of two men, Richard Brosnan and Mark Simpson, standing behind a rustic wooden fence in a rural landscape. Both men are wearing white long-sleeved shirts and have yellow Ray White name tags pinned to their chests. Richard is on the left, wearing khaki trousers, and Mark is on the right, wearing dark blue trousers. The background shows a grassy field and a cloudy sky. A yellow rectangular box in the top right corner contains the Ray White logo.

RayWhite

We understand the process of buying
and selling rural property

Experienced property agents who *deliver results*

Richard Brosnan 0400 361 114
Ray White Rural Rockhampton

Mark Simpson 0418 792 647
Ray White Biloela



VETERINARY GROUP



BULLCHECK ACCREDITED ON FARM SERVICES
CUSTOM SEMEN COLLECTION
FIXED TIME AI SERVICES PREGCHECK ACCREDITED



Monto
Mundubbera

8 Lister Street, Monto Q 4630
5 Willson Avenue, Mundubbera Q 4626
monto@montovet.com.au

(07) 4166 1285
(07) 4165 4386

www.montovet.com.au

Lonsdale
Agribusiness

Financial assessment of your business

Growth & expansion strategies for families

Assistance with debt restructure
and refinancing

Assistance with finance
for property purchases

Assistance with government
grants and subsidies

Advisory assistance from start-ups
to established businesses



Lisa Lonsdale
0427 465 170



lisa@lonsdaleagribusiness.com.au



Stocking an extensive range of farming supplies from stockfeed to fencing, we are your locally owned and family-run business with local knowledge to do the job. Your local Stihl and Torro dealership with an extensive range of outdoor power equipment, complete workshop repairs, and services. Full range of oils from 1lt to 1000lt pods. Bundy hot gas is available in either refillable bottles or 45kg.

Pop in for a coffee and a chat with Breno & Eleena Mitchell

We have bulk Molafos and sharp prices on Drylick plus an extensive range of quality custom blend feeds - free delivery on-farm with a smile.

Agents for wet lick in pods or bulk delivered straight to your farm.

A large range of animal health in-store.

p. 4166 3300 Breno 0427 162 337

20 Rutherford Street, Monto Q 4630 • montorural@outlook.com

montorural.com.au 

BEEF BREEDING SERVICES

More than *just* beef

affordable, assessable reproductive services



CANINE

OVINE

BOVINE

CAPRINE

EQUINE

Progressive, Tailored and Comprehensive > **Chat to us today**



ROCKHAMPTON
07 4936 4110

BRISBANE
07 3271 3297

ETNA CREEK
07 4934 2435

beefbreeding.com.au



Tyrepower

Keeping Bimbadeen on the move



Ph. 4166 1689 • 5 Flinders St, Monto Qld 4630
A/hrs: 0448 099 077 e. monto@tyrepower.com.au

Luke & Tara Harm



NOW BUILDINGS
Australia's Leading Wholesale Shed Company

 **Scholly's
Construction**

BUYER'S INSTRUCTIONS

This Buyer's Instruction Sheet **MUST** be completed **IN FULL** and **SIGNED** by the Buyer or their Authorised Representative



BUYER'S DETAILS

NAME _____

INVOICE TO _____

ADDRESS _____

_____ P/CODE _____

PHONE _____ MOBILE _____

EMAIL ADDRESS _____

DESTINATION address (for permit) _____

LOTS PURCHASED _____

ABCA PREFIX _____ **PIC** _____

For transfer of lots to a Brangus stud

For transfer of animals on NLIS

DELIVERY

☐ OWNERS TRANSPORT

☐ CARRIER _____ PICK UP TIME/DATE _____

INSURANCE

☐ YES INSURANCE COMPANY _____

We recommend insurance. It's the buyer's responsibility to confirm insurance on their purchases post-sale.

LIVESTOCK AGENT

☐ YES AGENT DETAILS _____

SIGNED _____ DATE _____

NO VERBAL INSTRUCTIONS WILL BE ACCEPTED - PLEASE COMPLETE THE FORM AND HAND TO AGENTS

BID CARD NO.

TOTAL PURCHASED

DISCLAIMERS & COPYRIGHT

TECHNICAL INFORMATION

Pedigrees and accompanying animal information in this catalogue are represented to the best of the vendors' knowledge at the time of publication. Every effort and all reasonable care has been taken by the vendor to ensure that the information provided in this catalogue is correct at the time of printing. However, neither the vendor or selling agents take responsibility in regards to the accuracy, reliability or completeness of the information provided, and do not assume any responsibility for the use or interpretation of this information.

You are encouraged to seek independent verification of any information contained in this catalogue.

EVENT

All persons who attend the sale do so at their own risk and the vendor assumes no liability, legal or otherwise, for any accidents which may occur.

CATALOGUE CREATIVE CONTENT

© All artwork, photographs and content remain the property of Bimbaddeen Cattle Co and Amanda Salisbury, and are protected by Australian and International copyright laws.

Unauthorized copying or reproduction is prohibited.



BIMBADEEN'S COMMITMENT

We take great care to present all of our bulls and heifers as fertile, functional animals on sale day.

To this end, all lots have been:

VET INSPECTED (with relevant vet certificate)

DNA TESTED for poll, coat colour & parentage

VACCINATED:

All SALE HEIFERS have had:

7-in-1 (twice), tick fever.

All SALE BULLS have had:

5-in-1 (twice), tick fever, 3-day, botulism & vibrio.

All bulls have been **FULLY SEMEN TESTED** - crushside (motility) and lab (morphology).

We expect our bulls to work naturally in the paddock and get pregnancies in their first season (providing they are kept in a reasonable condition and do not suffer any injury or illness post-sale).

Where there are any issues with purchases (not affected by post-sale injury or illness) noted within the first 12 months, please discuss with us in the first instance.

Where there are issues that are post-sale injury or illness related, please contact your insurance company.





2024 BIMBADEEN SALE

Our final sale at the 'Arthur's Knob' sale venue on Friday, August 30, 2024. Top priced bull was Bimbadeen Ulysses U5 (PP) sold to Kimberley Downs Brangus, Victoria (below) with top-price female Bimbadeen UTOPIA U058 (PP) going to Palmal Brangus, Dingo. We saw very strong repeat buyer action throughout & great finish with our females. A huge thanks to buyers, underbidders & our team!

Sale Quick Links

Pre-register for bid cards and get the latest info online!
Simply scan the relevant QR code with your smartphone camera.

To PRE-REGISTER for a BID CARD:

Scan [REGISTER TO BID](#) & fill in your details. Your bid card will be waiting for you to collect on Sale Day from the KellCo desk.

BIDDING ONLINE or want to check out the VIDEOS:

Scan the [STOCKLIVE](#) link to go to the Bimbadeen Sale online catalogue.

Chasing the latest EBVs, DNA or PEDIGREES:

Scan the [BRANGUS AUSTRALIA](#) link to see the most recent Breedplan info for sale lots, explore pedigrees or check on DNA tenderness results.

Scan the BIMBADEEN code to go straight to our website:

Here you will find all the links, the latest updates and supplementary sheets.



REGISTER TO BID



STOCKLIVE



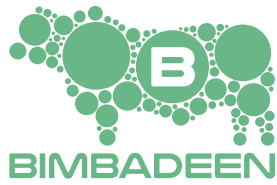
BRANGUS
AUSTRALIA



BIMBADEEN



Bimbadeen 'V drop' weaner bulls being walked out with horses & dogs. (from left Sarah, Emma, Mark with 'Maggie', and Jack)



BULLCHECK DNA EBVS DATA PEDIGREES MORPHS

All the latest sale updates here:

